



## Review Article

# Biodiversity and Conservation of Fish in the Beibu Gulf

Wang Teng<sup>1,2,3,4</sup>, Li Chunhou<sup>1,2,3,4</sup>, Liu Yong<sup>1,2,3,4\*</sup> and Zhu Ren<sup>5\*</sup>

<sup>1</sup>Key Laboratory of South China Sea Fishery Resources Exploitation and Utilization, Ministry of Agriculture and Rural Affairs, South China Sea Fisheries Research Institute, Chinese Academy of Fishery Sciences, Guangzhou 510300, China

<sup>2</sup>Southern Marine Science and Engineering Guangdong Laboratory (Guangzhou), Guangzhou 510300, China

<sup>3</sup>Scientific Observation and Research Field Station of Pearl River Estuary Ecosystem, Guangdong Province, Guangzhou 510300, China

<sup>4</sup>Guangdong Provincial Key Laboratory of Fishery Ecology and Environment, Guangzhou 510300, China

<sup>5</sup>Laboratory of Biological Invasion and Adaptive Evolution, Institute of Hydrobiology, Chinese Academy of Sciences, Wuhan 430072, China

## ABSTRACT

The Beibu Gulf is one of the biodiversity hotspots in the global marine ecosystem, and an important fishing ground of East Asia. In the past several decade years, multiple pressures including overfishing, habitats destruction, pollution and eutrophication, and non-native species have seriously threaten the biodiversity of fish in the Beibu Gulf. However, the information about fish fauna in this region is very poorly which limiting the conservation of fish biodiversity and sustainability of the fishery. In this study, we calculated taxonomic features of fish in the Beibu Gulf based on the sampling and observational field data obtained from the competent authorities. Our results indicate that 1519 species were recorded, which belongs to 42 orders and 198 families. Compared with earlier studies, the species richness of fish in Beibu Gulf has decreased significantly, especially in large predatory fish and demersal fish. Now, overfishing, habitats destruction, pollution and eutrophication, and non-native species are important threat to native fish biodiversity. The results shed light on the importance of conservation and ecosystem-based fishery management. For better to protect fish biodiversity and fisheries resources, more international cooperation on protected areas, fishing ban, and scientific research should be implemented for effectively protecting fish biodiversity and fisheries resource sustainability.

## Article Information

Received 01 March 2022

Revised 25 March 2022

Accepted 17 April 2022

Available online 08 November 2022 (early access)

Published 20 December 2023

## Authors' Contribution

WT, LCH, LY and ZR contributed in the investigation of the research work, methodology, formal analysis, software, data curation, writing the original draft of the manuscript, review, editing, and visualization. WT and LY contributed in the statistical analyses, software, formal analysis, writing review, editing type face, and data curation. WT and ZR have contributed in review and editing of the manuscript, visualization and validation. WT, LY and ZR contributed to conceptualization, methodology, resources, supervision, project administration, funding acquisition, and review and editing of the manuscript. All authors reviewed and approved the manuscript.

## Key words

Biodiversity, Coral reef fish, Destructive, Mangrove, Protection, Beibu gulf

## INTRODUCTION

Fishes are the most important members of vertebrates which contribute more than 50% of the total number of living vertebrate animals (Nelson, 2006). Fishes are also one of the seriously threatened animal groups (Bruton, 1995). Fishes are very important food and biological

resources to humans. The production of fisheries and aquaculture reached  $1.79 \times 10^8$  tons in 2018 (FAO, 2020). Biodiversity conservation of fishes has very high ecological and economic value and is the important cornerstone for human sustainable development (Worm and Branch, 2012). Compiling an inventory of fishes in a region is the preliminary step toward biodiversity conservation and sustainable development (Mora *et al.*, 2008; Stephenson and Stengel, 2020). In the past thirty years, many researchers have paid attention to fish biodiversity in the freshwater ecosystems of continent (e.g. South America), large rivers (e.g. Yangtze River and Mekong River), and biodiversity hotspots such as Hainan Island and Leizhou Peninsula (Reis *et al.*, 2016; Fu *et al.*, 2003; Kang, 2013; Xiong *et al.*, 2018a, 2019). However, some regions of marine biodiversity hotspots were overlooked or greatly underestimated, such as the Beibu Gulf.

\* Corresponding author: liuyong@scsfri.ac.cn, zhuren@ihb.ac.cn  
0030-9923/2024/0001-0429 \$ 9.00/0



Copyright 2024 by the authors. Licensee Zoological Society of Pakistan.

This article is an open access article distributed under the terms and conditions of the Creative Commons Attribution (CC BY) license (<https://creativecommons.org/licenses/by/4.0/>).

The Beibu Gulf is a shared sea waters between China and Vietnam, located in the northern continental shelf of the South China Sea. Due to its geographic and climatic conditions, the Beibu Gulf has highly productive and abundant fisheries resources and is an important fishery and aquaculture sea region (Qiu *et al.*, 2008). For better-protected fish biodiversity and fisheries resources, China government announced a fishing ban in Beibu Gulf in 1999. Although all types of fishing were forbidden by the Chinese government during the fishing moratorium periods, there were still fishing activities by the Vietnamese fishermen in the Beibu Gulf during that periods (Vu, 2013). Some researchers had surveyed fish biodiversity in the South China Sea (Qiu *et al.*, 2008). However, information of fish biodiversity is very disrupted due to lack of unified management and research between China and Vietnam government, which limited the conservation of fish biodiversity and fishery sustainability in the Beibu Gulf.

The objective of this paper was to review the status of the fish community composition and diversity in the Beibu Gulf. We also examined major cause of the decline of fishes and provide the management recommendation. This study provides information about the protection and conservation of fishes in the Beibu Gulf and gives fundamental suggestions for sustainabl use of fish and fishery resources of the Beibu Gulf in the future.

## STUDY AREA

The Beibu Gulf is a semi-enclosed sea area in the north of the South China Sea. The Beibu Gulf is surrounded by the China and Vietnam and located in 17°00'–21°45'N, 105°40'–110°10'E (Fig. 1). It is an area of about  $1.28 \times 10^5$  km<sup>2</sup>. The average water depth is about 40 m, with a maximum depth being about 100 m. The climate of Beibu Gulf is subtropical maritime and is dominated by monsoons, with an average temperature of 37.1°C. The average rainfall is about 1670 mm. Some rivers such as Red River, Fangcheng River, Nanliujiang River flow into the Beibu Gulf, and result in an extensive estuarine and mangrove ecosystem (Zhang *et al.*, 2020).

## SOURCES OF FISH INFORMATION

Literature review was used for collecting the distribution data of fish species in the Beibu Gulf. We searched for literature that contained the following combination of words: Beibu Gulf, fishery resources, fishes in Vietnam or China, fish fauna and ichthyography in the South China Sea in the title, abstract, or keywords from google scholar (<http://www.scholar.google.com>) and CNKI (<http://www.cnki.net>), and check their sample areas (Li *et*

*al.*, 1987; Sun, 1990; Ye *et al.*, 1993; Luo *et al.*, 1999; Wang *et al.*, 2006, 2017; Ye *et al.*, 2007; Zhou *et al.*, 2011; Hoang and Duc, 2012; Hoang *et al.*, 2017; Zhang *et al.*, 2017b; Thu *et al.*, 2019), and collected information from some Chinese books (IOZ *et al.*, 1962; CTCIT, 1986; Yuan *et al.*, 1994; Jia, 2003; Muda *et al.*, 2005; Wang, 2009; Chen 2015; Zhang *et al.*, 2017a; Fu, 2018; He and Lai, 2013; Lai and He, 2016; Liu *et al.*, 2016; Yu, 2019). To avoid the confusion caused by synonyms and changes of common names, we validated the Latin names of each species via Catalog of Fishes database (<https://www.calacademy.org/scientists/projects/catalog-of-fishes>).

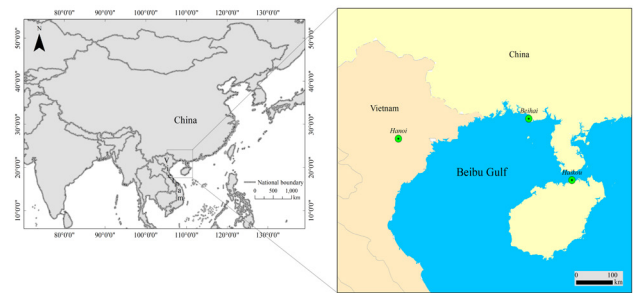


Fig. 1. Research waters of Beibu Gulf.

## DIVERSITY OF FISH SPECIES

A total of 1519 fish species belonging to 42 orders, 198 families were recorded in the Beibu Gulf (Table I). The Perciformes was the order with the highest number of fish species (907 species, accounting for 59.67%) in Beibu Gulf, followed by Scorpaeniformes with 81 species, Pleuronectiformes with 71 species, Tetraodontiforme with 70 species, Anguilliformes with 66 species, Clupeiformes with 59 species. Each of the other orders possesses less than 40 fish species (Fig. 2, Table I). It is noted that 107 fish species were listed as endangered species by IUCN (Table I).

Among family levels, the Gobiidae, Pomacentridae, Labridae, Serranidae, Carangidae and Apogonidae are the most abundant families, containing more than 40 species and accounting for 7.82%, 4.60%, 3.68%, 3.48%, 3.35% and 2.89% of the total number of fish species in the Beibu Gulf, respectively (Fig. 3, Table I).

It was noted that 928 species belonging to 28 orders, 124 families and 409 genera of reef associated fishes were recorded in the Beibu Gulf (Table I). The eight most highest number of families, each with more than 20 species, and which accounted for approximately 43.71% of the total number of fish species were Gobiidae (83), Pomacentridae (70), Labridae (56), Apogonidae (44), Serranidae (36), Chaetodontidae (32), Carangidae (23), and Blenniidae

(20).

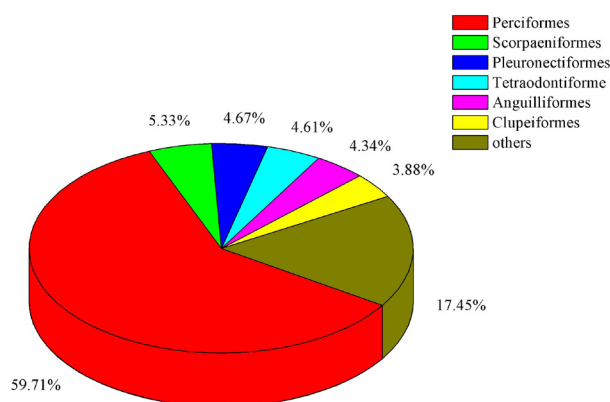


Fig. 2. Percentages of species number in different Orders of fishes from the Beibu Gulf.

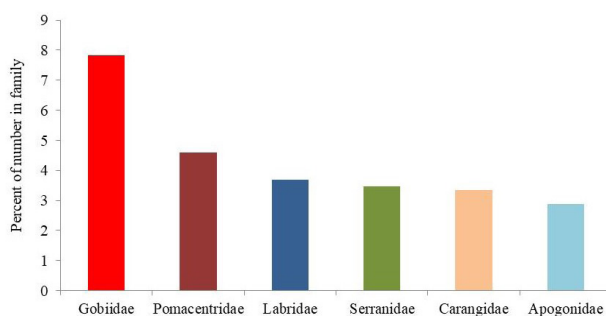


Fig. 3. Percentages of species number in different Families of fishes from the Beibu Gulf.

## THREATS TO FISHES

### Overfishing

Overfishing was one of the most important threats to ichthyological biodiversity and fishery resources in the Beibu Gulf (Dulvy *et al.*, 2003; Yu and Mu, 2006). With the engine boats introduced in the 1960s and promoted popular in the 1980s, the fishing efforts and catches had increased sharply in the past forty years (Wang *et al.*, 2019). Lack of precise data of fishing catches in the Beibu Gulf, some researchers estimated that fishing catch had reached  $8.57 \times 10^5$  tons each year (Zou *et al.*, 2013). Recently, some studies have shown that the fish community compositions have changed drastically in the Beibu Gulf due to overexploitation of fishing resources (Wang *et al.*, 2019). Now, the average stock density of many important fishes have decreased less than 10% of that in the 1960s (Wang *et al.*, 2021). Many traditionally commercial fish species (large size and high value), such as *Epinephelus* spp., *Lutjanus* spp. and *Larimichthys crocea*, have been

replaced by short-lived, low trophic level and small fishes (Chen *et al.*, 2011). For example, the biomass of piscivorous fish species has decreased to only 6% of that in the 1960s (Chen *et al.*, 2008). Furthermore, the population of many fishes, namely *Evynnis cardinalis*, *Saurida tumbil*, *S. undosquamis*, *Argyrosomus macrocephalus*, and *Nemipterus virgatus* have shown miniaturization and early sexual maturity due to overexploitation (Wang *et al.*, 2019; Zhang *et al.*, 2020).

Aquarium trade has increased quickly and formed a multi-billion-dollar industry in the past forty years, and over 1000 marine fishes are involved in the global aquarium fish industry (Dey, 2016). However, it was totally different with freshwater ornamental fishes, over 90% of them of which are farmed (Evers *et al.*, 2019), the vast majority of marine fishes were caught from wild (King, 2019). It is known that Beibu Gulf supported the high biodiversity of coral reef fishes (Arai, 2015). The most important export region was Asia, which accounts for over half of the global market for aquarium fish. Both China and Vietnam were important exports of aquarium trade in Asia. Many coral fishes were captured for the aquarium trade (Arai, 2015). A great number of coral reef fish species, such as *Chaetodon octofasciatus*, *C. auripes*, *C. lunulatus*, *C. melannotus*, *C. speculum*, *C. wiebeli*, *C. modestus*, *C. baronessa*, *C. triangulum*, *C. trifascialis*, *C. auriga*, *C. lineolatus*, *C. adiergastos*, and *C. lunula*, were captured for aquarium purposes in Beibu Gulf.

Many fish species were traded as traditional Chinese medicines. There were over 60 fish species in the Beibu Gulf (*Rhincodon typus*, *Halaehurus buergeri*, *Hippocampus histrix*, *Mustelus griseus*, etc., Table I) are listed in the Chinese traditional medicines (SCSO, 1978). For example, seahorses (Syngnathidae) were rare traditional medicines in China, although some small-scale culture of seahorses occurred in Southern China. The farmers did not have enough knowledge of biology and breeding technology of seahorse, hence these small seahorse farms eventually were closed. The seahorse medicine now came from field capture. Now, all seahorse have been listed on the CITES (IUCN website, 2021).

### Habitat destruction

The mangroves, coral reef, and seagrass habitats located in the Beibu Gulf (Wang *et al.*, 2021), provided a wide range of habitat to support high diversity of fishes (Table I). However, some important habitats of fishes were destroyed for aquaculture, because of the port and other human utilizations. The mangrove areas have decreased leading to the loss of over one third of shrimp ponds in Leizhou Peninsula (Lei *et al.*, 2022). In the past thirty years, the Beibu Gulf has become one of the busiest shipping

regions of the world, and over half of the oil tankers and commercial ships sail through this sea region (Wang *et al.*, 2021). Fangcheng port, which was the largest port in west China, planned to establish over 50.3 km shoreline and over 200 deep water berths. These large-scale human constructions had destroyed many important habitats of fish (Lei *et al.*, 2022). Finally, the stocks of many important commercial fishes, including *L. sanguineus*, *Therapon theraps*, *Gerres filamentosus*, *Carcharhinus menisorrh* and *Gymnocranius griseus* have decreased quickly (Yu and Mu, 2006).

#### *Pollution and eutrophication*

Pollution had caused significant changes in the structure and function of bioresources (phytoplankton, zooplankton) and fish communities in marine and coastal ecosystems (Islam and Tanaka, 2004). Recently, some studies have focused on different forms of pollution (e.g. heavy metal, organic pollutant, microplastics) in the Beibu Gulf (Kaiser *et al.*, 2016; Koongolla *et al.*, 2020; Wang *et al.*, 2020). Meanwhile, large number of nutrient imports in Beibu Gulf due to urban extension have resulted in aquaculture pollution and other human disturbances (Xiong *et al.*, 2018a; 2019). These overloaded nutrients caused eutrophication and harmful algal blooms and eventually fish mortality as hypoxia and toxic compounds (Xiong *et al.*, 2018a, 2019).

#### *Non-native species*

China waters have recently been found to be threatened with non-native aquatic species (Xiong *et al.*, 2015, 2017; Wang *et al.*, 2016). For developing aquaculture, a great number of non-native species have been introduced into China (Lin *et al.*, 2015). The Beibu Gulf is an important aquaculture and fishery catch region of China (Kang *et al.*, 2018) which provided large-scale aquaculture of some non-native species (Xiong *et al.*, 2018a, 2019; Wang *et al.*, 2021). For example, the red drum (*Sciaenops ocellatus*), introduced for aquaculture in the surrounding regions of Beibu Gulf got widely distributed and caused great threat to native biodiversity (Xiong *et al.*, 2018b, c; Lin *et al.*, 2020). In order to improve the production and quality of aquaculture, more and more non-native species will have to be introduced into the Beibu Gulf in the future (Wang *et al.*, 2021).

The Beibu Gulf is the station of origin of the maritime silk road. Now, Guangxi Beibu Gulf Port has built a total of 256 productive berths, which could berth ships of up to  $2.00 \times 10^5$  tons, and its routes are been able to reach more than 100 countries in the world, with direct access to more than 200 ports in the world (Qin, 2017). Now, the Beibu Gulf has become the busiest waterway in the world.

Over half of the oil tankers and commercial ships pass through the Beibu Gulf every year (Wang *et al.*, 2014). Inevitably, some non-native species were introduced in the Beibu Gulf by the ballast water of the ship (Wang *et al.*, 2021), and some non-native species, such as algae (*Alexandrium catenella*, and *Scrippsiella trochoidea*) had been distributed large scale and formed red tide, which caused a great number fish to die because of lack of oxygen (Wang *et al.*, 2021).

Recently, aquarium became the most important introduction pathway of non-native aquatic species in China (Xiong *et al.*, 2015, 2017; Wang *et al.*, 2016). We could buy non-native species for aquarium in some cities around the Beibu Gulf, such as Beihai, Fangchenggang (Wang *et al.*, 2021). Many non-native fishes such as *Xenostrobis securis*, *Glossogobius giuris*, *Hemichromis bimaculatus*, *Hippichthys spicifer*, and *Poecilia velifera* were very popular aquarium species in the world. Thus, countries around the Beibu Gulf (China, Vietnam) cultivated a great number of non-native species, including fishes, crayfish, shellfish (Wang *et al.*, 2021). Inevitably, some non-native fishes had escaped and found suitable habitats in the Beibu Gulf. For example, jewelfish (*H. bimaculatus*) had become one of the most widely distributed non-native species in the wetlands around the Beibu Gulf (Xiong *et al.*, 2018a, 2019).

## CONSERVATION

Fish biodiversity and fisheries resource is of high economic and ecological conservation significance in the Beibu Gulf. Firstly, fish was the most important protein source for about 2.7 hundred million people (92.7 million in Vietnam and 174 million in China) living in the coastal of Beibu Gulf. Secondly, Beibu Gulf provide diverse habitats (mangroves, seagrass, Coral reef, shelf, estuaries), with high biodiversity and endemism (Liu, 2013).

The establishment of protected areas was an effective measurement for fish biodiversity conservation (Xiong *et al.*, 2018a, 2019). However, there were only a few marine protected areas that covered quite small area of the Beibu Gulf (Trung *et al.*, 2014). In addition, the different life-history stages of many fishes inhabited different habitats, such as mangroves-seagrass-coral reef (Kimirei *et al.*, 2011). Thus, the establishment of marine protected areas should cover not only important fish habitats (such as mangroves, seagrass, Coral reef) but also the connecting galleries among these habitats (Sambrook *et al.*, 2019). Therefore, more and larger protected areas should be established in the Beibu Gulf covering important fish habitats and connecting galleries in the future.

**Table I. The fish biodiversity in Beibu Gulf.**

No	Orders	Families	Latin name	Habitats	IUCN
1	Carcharhini- formes	Carcharhini- dae	<i>Carcharhinus amblyrhynchoides</i> Whitley, 1934	Marine	Near threatened
2			<i>Carcharhinus amblyrhynchos</i> Bleeker, 1856	Marine	Endangered
3			<i>Carcharhinus brachyurus</i> Günther, 1870	Marine	Vulnerable
4			<i>Carcharhinus falciformis</i> Müller & Henle, 1839	Marine	Vulnerable
5			<i>Carcharhinus hemiodon</i> Müller & Henle, 1839*	Marine	Critically endangered
6			<i>Carcharhinus limbatus</i> Müller & Henle, 1839	Marine	Near threatened
7			<i>Carcharhinus melanopterus</i> Quoy & Gaimard, 1824	Marine	Vulnerable
8			<i>Carcharhinus plumbeus</i> Nardo, 1827	Marine	Vulnerable
9			<i>Carcharhinus sealei</i> Pietschmann, 1913	Marine	Near threatened
10			<i>Carcharhinus sorrah</i> Müller & Henle, 1839	Marine, Mangrove, Coral reef	Near threatened
11			<i>Galeocerdo cuvier</i> Péron & Lesueur, 1822	Marine	Near threatened
12			<i>Hemigaleus microstoma</i> Bleeker, 1852	Marine	Vulnerable
13			<i>Hemipristis elongata</i> Klunzinger, 1871	Marine	Vulnerable
14			<i>Rhizoprionodon oligolinx</i> Springer, 1964	Marine, Coral reef	Least concern
15			<i>Rhizoprionodon acutus</i> Rüppell, 1837	Marine	Vulnerable
16			<i>Scoliodon laticaudus</i> Müller & Henle, 1838	Marine	Near threatened
17			<i>Scoliodon macrorhynchos</i> Bleeker, 1852	Marine	Near threatened
18		Hemigaleidae	<i>Chaenogaleus macrostoma</i> Bleeker, 1852	Marine	Vulnerable
19		Scyliorhini- dae	<i>Halaaelurus buergeri</i> Müller & Henle, 1838*	Marine	Endangered
20		Sphyrnidae	<i>Eusphyra blochii</i> Cuvier, 1816	Marine	Endangered
21			<i>Sphyrna lewini</i> Griffith & Smith, 1834	Marine	Critically endangered
22			<i>Sphyrna mokarran</i> Rüppell, 1837	Marine, Mangrove, Coral reef	Critically endangered
23		Triakidae	<i>Mustelus griseus</i> Pietschmann, 1908*	Marine	Endangered
24			<i>Mustelus manazo</i> Bleeker, 1855	Marine	Endangered
25	Heterodonti- formes	Heterodon- tidae	<i>Heterodontus zebra</i> Gray, 1831	Marine	Least concern
26	Lamniformes	Lamnidae	<i>Isurus oxyrinchus</i> Rafinesque, 1810	Marine	Endangered
27		Odontaspidi- dae	<i>Carcharias tricuspidatus</i> Day, 1878	Marine	Not evaluated
28	Myliobati- formes	Dasyatidae	<i>Hemistrygon akajei</i> Müller & Henle, 1841*	Marine, Mangrove, Coral reef	Near threatened
29			<i>Hemistrygon bennettii</i> Müller & Henle, 1841	Marine	Not evaluated
30			<i>Hemistrygon navarrae</i> Steindachner, 1892	Marine	Vulnerable
31			<i>Hemistrygon sinensis</i> Steindachner, 1892	Marine	Endangered
32			<i>Himantura microphthalma</i> Chen, 1948	Marine, Mangrove, Coral reef	Not evaluated
35			<i>Himantura uarnak</i> Gmelin, 1789*	Marine	Vulnerable
33			<i>Maculabatis gerrardi</i> Gray, 1851	Marine	Endangered
34			<i>Telatrygon zugei</i> Müller & Henle, 1841	Marine, Mangrove, Coral reef	Near threatened

Table continued on next page.....

No	Orders	Families	Latin name	Habitats	IUCN
36			<i>Neotrygon kuhlii</i> Müller & Henle, 1841	Marine, Mangrove, Coral reef	Data deficient
37			<i>Taeniura lymma</i> Forsskål, 1775	Marine	Least concern
38			<i>Taeniurops meyeri</i> Müller & Henle, 1841	Marine	Vulnerable
39			<i>Urogymnus asperrimus</i> Bloch & Schneider, 1801	Marine	Vulnerable
40		Myliobatidae	<i>Aetobatus flagellum</i> Bloch & Schneider, 1801	Marine	Endangered
41			<i>Aetobatus narinari</i> Euphrasen, 1790	Marine	Endangered
42			<i>Aetobatus narutobiei</i> White, Furumitsu & Yamaguchi, 2013	Marine	Vulnerable
43			<i>Aetomylaeus maculatus</i> Gray, 1834	Marine	Endangered
44			<i>Aetomylaeus milvus</i> Müller & Henle, 1841	Marine	Endangered
45			<i>Aetomylaeus nichofii</i> Bloch & Schneider, 1801	Marine	Vulnerable
46			<i>Aetomylaeus vespertilio</i> Bleeker, 1852	Marine	Endangered
47			<i>Mobula japonica</i> Müller & Henle, 1841*	Marine	Near threatened
48		Rhinopteri- dae	<i>Rhinoptera javanica</i> Müller & Henle, 1841	Marine	Vulnerable
49		Urolophidae	<i>Urolophus aurantiacus</i> Müller & Henle, 1841	Marine	Vulnerable
50	Orectolobi- formes	Oreotolobi- dae	<i>Chiloscyllium plagiosum</i> Anonymous [Ben- nett], 1830	Marine, Mangrove, Coral reef	Near threatened
51		Rhincodon- tidae	<i>Rhincodon typus</i> Smith, 1828*	Marine	Endangered
52		Stegostoma- tidae	<i>Stegostoma fasciatum</i> Hermann, 1783	Marine	Endangered
53	Rajiformes	Gymnuridae	<i>Gymnura japonica</i> Temminck & Schlegel, 1850	Marine	Vulnerable
54			<i>Gymnura poecilura</i> Shaw, 1804	Marine, Mangrove, Coral reef	Vulnerable
55			<i>Gymnura zonura</i> Bleeker, 1852	Marine	Endangered
56		Platyrrhinidae	<i>Platyrrhina sinensis</i> Bloch & Schneider, 1801	Marine	Endangered
57			<i>Platyrrhina tangi</i> Iwatsuki, Zhang & Nakaya, 2011	Marine	Vulnerable
58		Pristidae	<i>Anoxypristis cuspidata</i> Latham, 1794*	Marine	Endangered
59		Rajidae	<i>Okamejei boesemani</i> Ishihara, 1987	Marine	Vulnerable
60			<i>Okamejei hollandi</i> Jordan & Richardson, 1909	Marine	Vulnerable
61			<i>Okamejei kenoei</i> Müller & Henle, 1841	Marine	Vulnerable
62	Rhinopristi- formes	Rhinobatidae	<i>Rhina ancylostomus</i> Bloch & Schneider, 1801	Marine	Critically endangered
63			<i>Rhinobatos hynnicephalus</i> Richardson, 1846	Marine	Endangered
64			<i>Rhinobatos schlegelii</i> Müller & Henle, 1841	Marine	Critically endangered
65			<i>Rhynchobatus djiddensis</i> Forsskål, 1775	Marine	Critically endangered
66	Squatini- formes	Squatinae	<i>Squatina nebulosa</i> Regan, 1906	Marine	Endangered
67	Torpedini- formes	Narcinidae	<i>Narcine lingula</i> Richardson, 1846	Marine	Vulnerable
68			<i>Narcine maculata</i> Shaw, 1804	Marine	Vulnerable
69			<i>Narcine timlei</i> Bloch & Schneider, 1801	Marine	Data deficient

*Table continued on next page.....*

No	Orders	Families	Latin name	Habitats	IUCN
70		Narkidae	<i>Narke dipterygia</i> Bloch & Schneider, 1801	Marine, Mangrove, Coral reef	Data deficient
71		Torpedinidae	<i>Tetronarce macneilli</i> Whitley, 1932	Marine	Data deficient
72	Albuliformes	Albulidae	<i>Albula glossodonta</i> Forsskål, 1775	Marine	Vulnerable
73			<i>Albula vulpes</i> Linnaeus, 1758	Marine	Near threatened
74	Anguilliformes	Anguillidae	<i>Anguilla bicolor</i> McClelland, 1844	Marine	Near threatened
75			<i>Anguilla japonica</i> Temminck & Schlegel, 1846	Marine, Mangrove, Coral reef	Endangered
76			<i>Anguilla marmorata</i> Quoy & Gaimard, 1824	Marine, Mangrove, Coral reef	Least concern
77			<i>Anguilla nebulosa</i> McClelland, 1844	Marine	Not evaluated
78		Congridae	<i>Ariosoma anago</i> Temminck & Schlegel, 1846	Marine, Mangrove, Coral reef	Data deficient
79			<i>Ariosoma meeki</i> Jordan & Snyder, 1900	Marine	Least concern
80			<i>Bathycongrus parviporus</i> Karmovskaya, 2011	Marine	Data deficient
81			<i>Bathymyrus simus</i> Smith, 1965	Marine	Least concern
82			<i>Conger cinereus</i> Rüppell, 1830	Marine, Mangrove, Coral reef	Least concern
83			<i>Gnathophis nystromi</i> Jordan & Snyder, 1901	Marine	Not evaluated
84			<i>Macrocephenchelys brevirostris</i> Chen & Weng, 1967	Marine	Least concern
85			<i>Rhynchoconger ectenurus</i> Jordan & Richardson, 1909	Marine	Least concern
86			<i>Uroconger lepturus</i> Richardson, 1845	Marine, Mangrove, Coral reef	Least concern
87		Dysommidae	<i>Dysomma anguillare</i> Barnard, 1923	Marine	Least concern
88			<i>Dysomma melanurum</i> Chen & Weng, 1967	Marine, Mangrove, Coral reef	Not evaluated
89		Muraenesocidae	<i>Congresox talabon</i> Cuvier, 1829	Marine, Mangrove, Coral reef	Not evaluated
90			<i>Congresox talabonoides</i> Bleeker, 1853	Marine, Intertidal	Not evaluated
91			<i>Muraenesox bagio</i> Hamilton, 1822	Marine, Intertidal	Not evaluated
92			<i>Muraenesox cinereus</i> Forsskål, 1775*	Marine, Mangrove, Coral reef	Least concern
93			<i>Muraenesox yamaguchiensis</i> Katayama & Takai, 1954	Marine	Not evaluated
94			<i>Oxyconger leptognathus</i> Bleeker, 1858	Marine, Mangrove, Coral reef	Not evaluated
95		Muraenidae	<i>Anarchias allardicei</i> Jordan & Starks, 1906	Marine, Mangrove, Coral reef	Least concern
96			<i>Echidna nebulosa</i> Ahl, 1789	Marine, Mangrove, Coral reef	Least concern
97			<i>Gymnothorax albimarginatus</i> Temminck & Schlegel, 1846	Marine	Least concern
98			<i>Gymnothorax chilospilus</i> Bleeker, 1864	Marine, Mangrove, Coral reef	Least concern

Table continued on next page.....

No	Orders	Families	Latin name	Habitats	IUCN
99			<i>Gymnothorax cribroris</i> Whitley, 1932	Marine, Mangrove, Coral reef	Least concern
100			<i>Gymnothorax favagineus</i> Bloch & Schneider, 1801*	Marine	Least concern
101			<i>Gymnothorax fimbriatus</i> Bennett, 1832*	Marine, Mangrove, Coral reef	Least concern
102			<i>Gymnothorax flavimarginatus</i> Rüppell, 1830	Marine, Mangrove, Coral reef	Least concern
103			<i>Gymnothorax isingteena</i> Richardson, 1845*	Marine, Mangrove, Coral reef	Least concern
104			<i>Gymnothorax javanicus</i> Bleeker, 1859	Marine, Mangrove, Coral reef	Least concern
105			<i>Gymnothorax kidako</i> Temminck & Schlegel, 1846	Marine	Least concern
106			<i>Gymnothorax minor</i> Temminck & Schlegel, 1846	Marine	Least concern
107			<i>Gymnothorax pictus</i> Ahl, 1789*	Marine, Mangrove, Coral reef	Least concern
108			<i>Gymnothorax prionodon</i> Ogilby, 1895	Marine	Least concern
109			<i>Gymnothorax punctatofasciatus</i> Bleeker, 1863*	Marine	Not evaluated
110			<i>Gymnothorax reevesii</i> Richardson, 1845*	Marine, Mangrove, Coral reef	Not evaluated
111			<i>Gymnothorax reticularis</i> Bloch, 1795*	Marine	Not evaluated
112			<i>Gymnothorax richardsonii</i> Bleeker, 1852*	Marine	Least concern
113			<i>Gymnothorax rueppelliae</i> McClelland, 1844	Marine	Least concern
114			<i>Gymnothorax thyrsoides</i> Richardson, 1845	Marine, Mangrove, Coral reef	Least concern
115			<i>Gymnothorax undulatus</i> Lacepède, 1803*	Marine, Mangrove, Coral reef	Least concern
116			<i>Scuticaria tigrina</i> Lesson, 1828	Marine, Mangrove, Coral reef	Least concern
117			<i>Strophidon sathete</i> Hamilton, 1822	Marine	Not evaluated
118			<i>Uropterygius concolor</i> Rüppell, 1838	Marine, Mangrove, Coral reef, Intertidal	Least concern
119			<i>Uropterygius xanthopterus</i> Bleeker, 1859	Marine, Mangrove, Coral reef	Least concern
120		Nettastomidae	<i>Saurenhelys fierasfer</i> Jordan & Snyder, 1901	Marine	Least concern
121		Ophichthidae	<i>Ahlia egmontis</i> Jordan, 1884	Marine	Least concern
122			<i>Bascanichthys deraniyagalai</i> Menon, 1961	Marine	Not evaluated
123			<i>Brachysomophis crocodilinus</i> Bennett, 1833	Marine	Not evaluated
124			<i>Cirrhimuraena chinensis</i> Kaup, 1856	Marine, Intertidal	Not evaluated
125			<i>Muraenichthys gymnopterus</i> Bleeker, 1853	Marine, Mangrove, Coral reef, Intertidal	Not evaluated
126			<i>Muraenichthys thompsoni</i> Jordan & Richardson, 1908	Marine, Mangrove, Coral reef, Intertidal	Not evaluated
127			<i>Myrichthys maculosus</i> Cuvier, 1816	Marine, Mangrove, Coral reef	Not evaluated

*Table continued on next page.....*



No	Orders	Families	Latin name	Habitats	IUCN
128			<i>Ophichthus apicalis</i> Anonymous [Bennett], 1830	Marine, Mangrove, Coral reef	Not evaluated
129			<i>Ophichthus asakusae</i> Jordan & Snyder, 1901	Marine, Mangrove, Coral reef	Not evaluated
130			<i>Ophichthus celebicus</i> Bleeker, 1856	Marine	Not evaluated
131			<i>Ophichthus cylindroideus</i> Ranzani, 1839	Marine	Least concern
132			<i>Ophichthus lithinus</i> Jordan & Richardson, 1908	Marine	Not evaluated
133			<i>Ophichthus macrochir</i> Bleeker, 1853	Marine	Not evaluated
134			<i>Ophichthus shaoi</i> McCosker & Ho, 2015	Marine	Not evaluated
135			<i>Ophichthus singaporensis</i> Bleeker, 1864-65	Marine	Not evaluated
136			<i>Pisodonophis boro</i> Hamilton, 1822	Marine, Mangrove, Coral reef	Least concern
137			<i>Pisodonophis cancrivorus</i> Richardson, 1848	Marine, Mangrove, Coral reef, Intertidal	Not evaluated
138			<i>Scolecenchelys macroptera</i> Bleeker, 1857	Marine, Mangrove, Coral reef	Not evaluated
139			<i>Skythrenchelys zabra</i> Castle & McCosker, 1999	Marine	Least concern
140	Atherini-	Atherinidae	<i>Atherinomorus forskalii</i> Rüppell, 1838	Marine	Not evaluated
141	formes		<i>Atherinomorus lacunosus</i> Forster, 1801	Marine, Mangrove, Coral reef	Not evaluated
142			<i>Atherinomorus pinguis</i> Lacepède, 1803	Marine	Not evaluated
143			<i>Doboatherina duodecimalis</i> Valenciennes, 1835	Marine	Least concern
144			<i>Hypoatherina temminckii</i> Bleeker, 1854	Marine, Mangrove, Coral reef	Not evaluated
145			<i>Hypoatherina tsurugae</i> Jordan & Starks, 1901	Marine	Not evaluated
146			<i>Hypoatherina valenciennesi</i> Bleeker, 1854	Marine, Mangrove, Coral reef	Not evaluated
147		Melanotaeniidae	<i>Chilatherina bleheri</i> Allen, 1985	Marine, Intertidal	Endangered
148	Aulopi-	Synodontidae	<i>Harpadon microchir</i> Günther, 1878	Marine	Least concern
149	formes		<i>Harpadon nehereus</i> Hamilton, 1822	Marine, Mangrove, Coral reef	Near threatened
150			<i>Saurida argentea</i> Macleay, 1881	Marine	Least concern
151			<i>Saurida elongata</i> Temminck & Schlegel, 1846*	Marine, Mangrove, Coral reef	Least concern
152			<i>Saurida filamentosa</i> Ogilby, 1910*	Marine	Least concern
153			<i>Saurida gracilis</i> Quoy & Gaimard, 1824	Marine	Least concern
154			<i>Saurida macrolepis</i> Tanaka, 1917	Marine	Least concern
155			<i>Saurida nebulosa</i> Valenciennes, 1850	Marine	Least concern
156			<i>Saurida tumbil</i> Bloch, 1795*	Marine, Mangrove, Coral reef	Least concern
157			<i>Saurida umeyoshii</i> Inoue & Nakabo, 2006	Marine	Least concern
158			<i>Saurida undosquamis</i> Richardson, 1848*	Marine, Mangrove, Coral reef	Least concern

Table continued on next page.....

No	Orders	Families	Latin name	Habitats	IUCN	
159			<i>Saurida wanieso</i> Shindo & Yamada, 1972	Marine	Data deficient	
160			<i>Saurida brasiliensis</i> Norman, 1935	Marine	Least concern	
161			<i>Synodus binotatus</i> Schultz, 1953	Marine, Mangrove, Coral reef	Least concern	
162			<i>Synodus dermatogenys</i> Fowler, 1912	Marine	Least concern	
163			<i>Synodus fuscus</i> Tanaka, 1917	Marine	Least concern	
164			<i>Synodus hoshinonis</i> Tanaka, 1917	Marine	Least concern	
165			<i>Synodus indicus</i> Day, 1873	Marine	Least concern	
166			<i>Synodus jaculum</i> Russell & Cressey, 1979	Marine, Mangrove, Coral reef	Least concern	
167			<i>Synodus kaianus</i> Günther, 1880	Marine	Least concern	
168			<i>Synodus variegatus</i> Lacepède, 1803	Marine, Mangrove, Coral reef	Least concern	
169			<i>Trachinocephalus myops</i> Forster, 1801*	Marine, Mangrove, Coral reef	Least concern	
170	Beloniforme	Hemiramphidae	<i>Euleptorhamphus viridis</i> van Hasselt, 1823	Marine	Not evaluated	
171			<i>Hemiramphus far</i> Forsskål, 1775	Marine, Mangrove, Coral reef, Intertidal	Not evaluated	
172			<i>Hemiramphus lutkei</i> Valenciennes, 1847	Marine, Mangrove, Coral reef	Not evaluated	
173			<i>Hyporhamphus intermedius</i> Cantor, 1842	Marine, Mangrove, Coral reef	Not evaluated	
174			<i>Hyporhamphus dussumieri</i> Valenciennes, 1847	Marine	Not evaluated	
175			<i>Hyporhamphus gernaerti</i> Valenciennes, 1847	Marine, Mangrove, Coral reef	Not evaluated	
176			<i>Hyporhamphus limbatus</i> Valenciennes, 1847	Marine, Mangrove, Coral reef	Least concern	
177			<i>Hyporhamphus quoyi</i> Valenciennes, 1847	Marine, Mangrove, Coral reef	Not evaluated	
178			<i>Hyporhamphus sajori</i> Temminck & Schlegel, 1846	Marine, Mangrove, Coral reef	Not evaluated	
179			<i>Rhynchorhamphus georgii</i> Valenciennes, 1847	Marine, Mangrove, Coral reef	Not evaluated	
180			<i>Zenarchopterus buffonis</i> Valenciennes, 1847	Marine, Mangrove, Coral reef	Least concern	
181			Belonidae	<i>Ablennes hians</i> Valenciennes, 1846	Marine	Least concern
182				<i>Strongylura anastomella</i> Valenciennes, 1846	Marine, Mangrove, Coral reef	Not evaluated
183				<i>Strongylura leiura</i> Bleeker, 1850	Marine, Mangrove, Coral reef	Not evaluated
184				<i>Strongylura strongylura</i> van Hasselt, 1823	Marine, Mangrove, Coral reef	Not evaluated
185				<i>Tylosurus acus</i> Lacepède, 1803	Marine, Mangrove, Coral reef	Least concern
186	<i>Tylosurus crocodilus</i> Péron & Lesueur, 1821	Marine, Mangrove, Coral reef		Least concern		

*Table continued on next page.....*

No	Orders	Families	Latin name	Habitats	IUCN
187			<i>Tylosurus melanotus</i> Bleeker, 1850	Marine, Mangrove, Coral reef	Not evaluated
188			<i>Cheilopogon spilopterus</i> Valenciennes, 1847*	Marine	Not evaluated
189			<i>Cheilopogon arcticeps</i> Günther, 1866*	Marine	Not evaluated
190			<i>Cheilopogon cyanopterus</i> Valenciennes, 1847*	Marine	Least concern
191			<i>Cheilopogon katoptron</i> Bleeker, 1865	Marine	Not evaluated
192			<i>Cypselurus hexazona</i> Bleeker, 1853	Marine, Mangrove, Coral reef	Not evaluated
193			<i>Cypselurus oligolepis</i> Bleeker, 1865*	Marine, Mangrove, Coral reef	Not evaluated
194			<i>Cypselurus poecilopterus</i> Valenciennes, 1847	Marine	Not evaluated
195			<i>Hirundichthys rondeletii</i> Valenciennes, 1847	Marine, Mangrove, Coral reef	Least concern
196			<i>Oxyporhamphus micropterus</i> Valenciennes, 1847	Marine	Not evaluated
197			<i>Parexocoetus brachypterus</i> Richardson, 1846	Marine	Not evaluated
198			<i>Parexocoetus mento</i> Valenciennes, 1847	Marine	Not evaluated
199		Scomberesocidae	<i>Cololabis saira</i> Brevoort, 1856	Marine	Not evaluated
200	Beryciformes	Berycidae	<i>Centroberyx rubricaudus</i> Liu & Shen, 1985	Marine	Data deficient
201		Holocentridae	<i>Myripristis adusta</i> Bleeker, 1853	Marine, Mangrove, Coral reef	Least concern
202			<i>Myripristis berndti</i> Jordan & Evermann, 1903	Marine, Mangrove, Coral reef	Least concern
203			<i>Myripristis botche</i> Cuvier, 1829	Marine, Mangrove, Coral reef	Least concern
204			<i>Myripristis hexagona</i> Lacepède, 1802	Marine, Mangrove, Coral reef	Least concern
205			<i>Myripristis murdjan</i> Forsskål, 1775	Marine, Mangrove, Coral reef	Least concern
206			<i>Myripristis pralinia</i> Cuvier, 1829	Marine, Mangrove, Coral reef	Least concern
207			<i>Myripristis violacea</i> Bleeker, 1851	Marine, Mangrove, Coral reef	Least concern
208			<i>Neoniphon opercularis</i> Valenciennes, 1831	Marine, Mangrove, Coral reef	Least concern
209			<i>Neoniphon sammara</i> Forsskål, 1775	Marine, Mangrove, Coral reef	Least concern
210			<i>Ostichthys japonicus</i> Cuvier, 1829	Marine, Mangrove, Coral reef	Least concern
211			<i>Sargocentron caudimaculatum</i> Rüppell, 1838	Marine, Mangrove, Coral reef	Least concern
212			<i>Sargocentron diadema</i> Lacepède, 1802	Marine, Mangrove, Coral reef	Least concern
213			<i>Sargocentron praslin</i> Lacepède, 1802	Marine, Mangrove, Coral reef	Least concern

Table continued on next page.....

No	Orders	Families	Latin name	Habitats	IUCN
214			<i>Sargocentron rubrum</i> Forsskål, 1775	Marine, Mangrove, Coral reef	Least concern
215			<i>Sargocentron spiniferum</i> Forsskål, 1775	Marine, Mangrove, Coral reef	Least concern
216			<i>Sargocentron tere</i> Cuvier, 1829	Marine, Mangrove, Coral reef	Least concern
217			<i>Sargocentron tieroides</i> Bleeker, 1853	Marine, Mangrove, Coral reef	Least concern
218		Monocentridae	<i>Monocentris japonica</i> Houttuyn, 1782	Marine	Least concern
219	Clupeiformes	Chirocentridae	<i>Chirocentrus dorab</i> Forsskål, 1775	Marine, Mangrove, Coral reef	Least concern
220			<i>Chirocentrus nudus</i> Swainson, 1839	Marine	Least concern
221		Clupeidae	<i>Amblygaster clupeoides</i> Bleeker, 1849	Marine	Least concern
222			<i>Anodontostoma chacunda</i> Hamilton, 1822	Marine	Least concern
223			<i>Clupanodon thrissa</i> Linnaeus, 1758	Marine, Mangrove, Coral reef	Least concern
224			<i>Clupea pallasii</i> Valenciennes, 1847	Marine, Mangrove, Coral reef	Data deficient
225			<i>Clupeoides borneensis</i> Bleeker, 1851	Marine	Least concern
226			<i>Dussumieria acuta</i> Valenciennes, 1847	Marine	Least concern
227			<i>Dussumieria elopsoides</i> Bleeker, 1849	Marine, Mangrove, Coral reef	Least concern
228			<i>Escualosa thoracata</i> Valenciennes, 1847	Marine, Mangrove, Coral reef	Least concern
229			<i>Etrumeus micropus</i> Temminck & Schlegel, 1846	Marine	Least concern
230			<i>Herklotsichthys ovalis</i> Anonymous [Bennett], 1830*	Marine, Mangrove, Coral reef	Data deficient
231			<i>Herklotsichthys quadrimaculatus</i> Rüppell, 1837	Marine, Mangrove, Coral reef	Least concern
232			<i>Hilsa kelee</i> Cuvier, 1829	Marine	Least concern
233			<i>Konosirus punctatus</i> Temminck & Schlegel, 1846	Marine, Mangrove, Coral reef	Least concern
234			<i>Nematalosa come</i> Richardson, 1846	Marine	Least concern
235			<i>Nematalosa japonica</i> Regan, 1917	Marine	Data deficient
236			<i>Nematalosa nasus</i> Bloch, 1795	Marine, Mangrove, Coral reef	Least concern
237			<i>Sardinella albella</i> Valenciennes, 1847	Marine, Mangrove, Coral reef	Least concern
238			<i>Sardinella aurita</i> Valenciennes, 1847	Marine, Mangrove, Coral reef	Least concern
239			<i>Sardinella brachysoma</i> Bleeker, 1852	Marine, Mangrove, Coral reef	Least concern
240			<i>Sardinella fimbriata</i> Valenciennes, 1847	Marine, Mangrove, Coral reef	Least concern
241			<i>Sardinella gibbosa</i> Bleeker, 1849	Marine	Least concern

Table continued on next page.....

No	Orders	Families	Latin name	Habitats	IUCN
242			<i>Sardinella hualiensis</i> Chu & Tsai, 1958	Marine	Least concern
243			<i>Sardinella jussieu</i> Lacepède, 1803	Marine, Mangrove, Coral reef	Data deficient
244			<i>Sardinella lemuru</i> Bleeker, 1853*	Marine, Intertidal	Near threatened
245			<i>Sardinella maderensis</i> Lowe, 1838	Marine	Vulnerable
246			<i>Sardinella melanura</i> Cuvier, 1829	Marine, Mangrove, Coral reef	Least concern
247			<i>Sardinella richardsoni</i> Wongratana, 1983	Marine, Mangrove, Coral reef	Data deficient
248			<i>Sardinella sindensis</i> Day, 1878	Marine	Least concern
249			<i>Sardinella zunasi</i> Bleeker, 1854	Marine, Mangrove, Coral reef	Least concern
250			<i>Tenualosa reevesii</i> Richardson, 1846*	Marine, Mangrove, Coral reef	Data deficient
251		Elopidae	<i>Elops hawaiiensis</i> Regan, 1909	Marine	Data deficient
252			<i>Elops saurus</i> Linnaeus, 1766	Marine, Mangrove, Coral reef	Least concern
253		Engraulidae	<i>Coilia grayii</i> Richardson, 1845	Marine, Mangrove, Coral reef	Least concern
254			<i>Coilia macrognathos</i> Bleeker, 1852	Marine	Data deficient
255			<i>Coilia mystus</i> Linnaeus, 1758	Marine, Mangrove, Coral reef	Endangered
256			<i>Encrasicholina heteroloba</i> Rüppell, 1837	Marine	Least concern
257			<i>Encrasicholina punctifer</i> Fowler, 1938	Marine	Least concern
258			<i>Engraulis japonicus</i> Temminck & Schlegel, 1846	Marine, Mangrove, Coral reef	Least concern
259			<i>Setipinna melanochir</i> Bleeker, 1849	Marine	Data deficient
260			<i>Setipinna taty</i> Valenciennes, 1848	Marine, Mangrove, Coral reef	Least concern
261			<i>Stolephorus chinensis</i> Günther, 1880	Marine, Mangrove, Coral reef	Least concern
262			<i>Stolephorus commersonii</i> Lacepède, 1803	Marine, Mangrove, Coral reef	Least concern
263			<i>Stolephorus holodon</i> Boulenger, 1900	Marine, Mangrove, Coral reef	Least concern
264			<i>Stolephorus indicus van</i> Hasselt, 1823	Marine, Mangrove, Coral reef	Least concern
265			<i>Stolephorus tri</i> Bleeker, 1852	Marine, Mangrove, Coral reef	Data deficient
266			<i>Stolephorus waitei</i> Jordan & Seale, 1926	Marine	Data deficient
267			<i>Thryssa chefuensis</i> Günther, 1874	Marine	Data deficient
268			<i>Thryssa dussumieri</i> Valenciennes, 1848	Marine, Mangrove, Coral reef, Intertidal	Least concern
269			<i>Thryssa hamiltonii</i> Gray, 1835	Marine, Mangrove, Coral reef	Least concern
270			<i>Thryssa kammalensis</i> Bleeker, 1849	Marine	Data deficient

Table continued on next page.....

No	Orders	Families	Latin name	Habitats	IUCN
271			<i>Thryssa mystax</i> Bloch & Schneider, 1801	Marine, Mangrove, Coral reef, Intertidal	Least concern
272			<i>Thryssa setirostris</i> Broussonet, 1782	Marine, Mangrove, Coral reef	Least concern
273			<i>Thryssa vitrirostris</i> Gilchrist & Thompson, 1908	Marine, Mangrove, Coral reef	Least concern
274		Pristigasteridae	<i>Ilisha elongata</i> Anonymous [Bennett], 1830*	Marine, Mangrove, Coral reef	Least concern
275			<i>Ilisha filigera</i> Valenciennes, 1847	Marine	Data deficient
276			<i>Ilisha melastoma</i> Bloch & Schneider, 1801	Marine, Mangrove, Coral reef	Least concern
277			<i>Opisthopterus tardoore</i> Cuvier, 1829	Marine	Least concern
278	Cypriniformes	Cobitidae	<i>Cobitis turcica</i> Hankó, 1925	Marine	Endangered
279			<i>Misgurnus anguillicaudatus</i> Cantor, 1842	Marine, Mangrove, Coral reef	Least concern
280		Cyprinidae	<i>Carassioides acuminatus</i> Richardson, 1846	Marine	Least concern
281			<i>Carassius auratus</i> Linnaeus, 1758	Marine, Mangrove, Coral reef	Least concern
282			<i>Acheilognathus tonkinensis</i> Vaillant, 1892	Marine	Data deficient
283			<i>Cirrhinus molitorella</i> Valenciennes, 1844	Marine, Mangrove, Coral reef	Near threatened
284			<i>Ctenopharyngodon idella</i> Valenciennes, 1844	Marine, Mangrove, Coral reef	Not evaluated
285			<i>Culter flavipinnis</i> Tirant, 1883	Marine	Data deficient
286			<i>Cyprinus carpio</i> Linnaeus, 1758	Marine, Mangrove, Coral reef	Vulnerable
287			<i>Cyprinus melanes</i> Mai, 1978	Marine	Data deficient
288			<i>Hemibarbus maculatus</i> Bleeker, 1871	Marine, Mangrove, Coral reef	Not evaluated
289			<i>Hemiculter leucisculus</i> Basilewsky, 1855	Marine, Mangrove, Coral reef	Least concern
290			<i>Henicorhynchus siamensis</i> Sauvage, 1881	Marine, Mangrove, Coral reef	Least concern
291			<i>Hypophthalmichthys molitrix</i> Valenciennes, 1844	Marine, Mangrove, Coral reef	Near threatened
292			<i>Osteochilus lini</i> Fowler, 1935	Marine	Least concern
293			<i>Rasbora steineri</i> Nichols & Pope, 1927	Marine	Least concern
294			<i>Metzia lineata</i> Pellegrin, 1907	Marine	Least concern
295			<i>Rhodeus ocellatus</i> Kner, 1866	Marine	Data deficient
296			<i>Rhodeus spinalis</i> Oshima, 1926	Marine	Least concern
297			<i>Squalidus chankaensis</i> Dybowski, 1872	Marine	Not evaluated
298	Cyprinodontiformes	Adrianichthyidae	<i>Oryzias curvinotus</i> Nichols & Pope, 1927	Marine, Mangrove, Coral reef	Data deficient
299		Poeciliidae	<i>Poecilia reticulata</i> Peters, 1859	Marine	Least concern

*Table continued on next page.....*

No	Orders	Families	Latin name	Habitats	IUCN
300	Elopiformes	Megalopidae	<i>Megalops cyprinoides</i> Broussonet, 1782	Marine, Mangrove, Coral reef	Data deficient
301	Gadiformes	Bregmacerotidae	<i>Bregmaceros bathymaster</i> Jordan & Bollman, 1890	Marine	Least concern
302			<i>Bregmaceros lanceolatus</i> Shen, 1960	Marine	Not evaluated
303			<i>Bregmaceros mccllellandi</i> Thompson, 1840	Marine	Not evaluated
304			<i>Bregmaceros nectabanus</i> Whitley, 1941	Marine	Least concern
305			<i>Bregmaceros pseudolanceolatus</i> Torii, Javonilo & Ozawa, 2004	Marine	Not evaluated
306	Gasterosteiformes	Centriscidae	<i>Centriscus scutatus</i> Linnaeus, 1758	Marine	Least concern
307		Fistulariidae	<i>Fistularia commersonii</i> Rüppell, 1838	Marine, Mangrove, Coral reef	Least concern
308			<i>Fistularia petimba</i> Lacepède, 1803	Marine, Mangrove, Coral reef	Least concern
309		Pegasidae	<i>Eurypegasmus draconis</i> Linnaeus, 1766	Marine	Least concern
310			<i>Pegasus laternarius</i> Cuvier, 1816*	Marine	Data deficient
311			<i>Pegasus volitans</i> Linnaeus, 1758	Marine	Data deficient
312	Gonorhynchiformes	Chanidae	<i>Chanos chanos</i> Forsskål, 1775	Marine, Mangrove, Coral reef	Least concern
313	Lampridiformes	Vellferidae	<i>Velifer hypselopterus</i> Bleeker, 1879	Marine	Least concern
314	Lophiiformes	Antennariidae	<i>Antennarius hispidus</i> Bloch & Schneider, 1801	Marine	Not evaluated
315			<i>Antennarius maculatus</i> Desjardins, 1840	Marine	Not evaluated
316			<i>Antennarius striatus</i> Shaw, 1794	Marine	Least concern
317			<i>Antennatus nummifer</i> Cuvier, 1817	Marine	Least concern
318			<i>Histrio histrio</i> Linnaeus, 1758	Marine	Least concern
319	Lophiiformes	Lophiiformes	<i>Lophiomus setigerus</i> Vahl, 1797	Marine	Least concern
320		Ogcocephalidae	<i>Halieutaea fumosa</i> Alcock, 1894	Marine	Least concern
321			<i>Halieutaea indica</i> Annandale & Jenkins, 1910	Marine	Least concern
322			<i>Halieutaea stellata</i> Vahl, 1797*	Marine	Least concern
323	Mugiliformes	Mugilidae	<i>Crenimugil buchanani</i> Bleeker, 1853	Marine, Mangrove, Coral reef	Least concern
324			<i>Crenimugil seheli</i> Forsskål, 1775	Marine, Mangrove, Coral reef	Least concern
325			<i>Ellochelon vaigiensis</i> Quoy & Gaimard, 1825	Marine, Mangrove, Coral reef	Least concern
326			<i>Planiliza carinata</i> Valenciennes, 1836	Marine, Mangrove, Coral reef, Intertidal	Not evaluated
327			<i>Crenimugil pedaraki</i> Valenciennes, 1836	Marine	Not evaluated
328			<i>Mugil cephalus</i> Linnaeus, 1758	Marine, Mangrove, Coral reef, Intertidal	Least concern
329			<i>Osteomugil cunnesius</i> Valenciennes, 1836	Marine, Mangrove, Coral reef	Not evaluated

Table continued on next page.....

No	Orders	Families	Latin name	Habitats	IUCN
330			<i>Osteomugil engeli</i> Bleeker, 1858	Marine, Mangrove, Coral reef	Least concern
331			<i>Osteomugil perusii</i> Valenciennes, 1836	Marine	Least concern
332			<i>Planiliza affinis</i> Günther, 1861	Marine, Mangrove, Coral reef	Not evaluated
333			<i>Planiliza haematocheilus</i> Temminck & Schlegel, 1845	Marine, Mangrove, Coral reef	Not evaluated
334			<i>Planiliza macrolepis</i> Smith, 1846	Marine, Mangrove, Coral reef	Least concern
335			<i>Planiliza melinoptera</i> Valenciennes, 1836	Marine, Mangrove, Coral reef	Least concern
336			<i>Planiliza subviridis</i> Valenciennes, 1836	Marine, Mangrove, Coral reef	Not evaluated
337	Myctophi- formes	Myctophidae	<i>Bentosema pterotum</i> Alcock, 1890	Marine	Least concern
338			<i>Symbolophorus evermanni</i> Gilbert, 1905	Marine	Least concern
339	Ophidii- formes	Bythitidae	<i>Diancistrus fuscus</i> Fowler, 1946	Marine, Mangrove, Coral reef	Least concern
340		Carapidae	<i>Carapus mourlani</i> (Petit, 1934)	Marine	Least concern
341		Dinematich- thyidae	<i>Alionematichthys riukiuensis</i> Aoyagi, 1954	Marine, Mangrove, Coral reef	Least concern
342		Ophidiidae	<i>Brotula multibarbata</i> Temminck & Schlegel, 1846	Marine	Least concern
343			<i>Hoplobrotula armata</i> Temminck & Schlegel, 1846	Marine	Least concern
344			<i>Lepophidium marmoratum</i> Goode & Bean, 1885	Marine, Mangrove, Coral reef	Least concern
345			<i>Neobythites unimaculatus</i> Smith & Radcliffe, 1913	Marine	Least concern
346			<i>Ophidion muraenolepis</i> Günther, 1880	Marine	Least concern
347			<i>Sirembo imberbis</i> Temminck & Schlegel, 1846	Marine	Least concern
348	Osmeri- formes	Salangidae	<i>Neosalanx brevirostris</i> Pellegrin, 1923	Marine	Data deficient
349			<i>Protosalanx chinensis</i> Basilewsky, 1855	Marine, Mangrove, Coral reef	Data deficient
350			<i>Salanx ariakensis</i> Kishinouye, 1902	Marine, Intertidal	Not evaluated
351	Osteoglossi- formes	Notopteridae	<i>Notopterus notopterus</i> Pallas, 1769	Marine	Least concern
352	Perciformes	Acanthuridae	<i>Acanthurus dussumieri</i> Valenciennes, 1835	Marine, Mangrove, Coral reef	Least concern
353			<i>Acanthurus japonicus</i> Schmidt, 1931	Marine, Mangrove, Coral reef	Least concern
354			<i>Acanthurus lineatus</i> Linnaeus, 1758	Marine, Mangrove, Coral reef	Least concern
355			<i>Acanthurus nigrofuscus</i> Forsskål, 1775	Marine, Mangrove, Coral reef	Least concern
356			<i>Acanthurus olivaceus</i> Bloch & Schneider, 1801	Marine, Mangrove, Coral reef	Least concern
357			<i>Acanthurus triostegus</i> Linnaeus, 1758	Marine, Mangrove, Coral reef	Least concern

*Table continued on next page.....*



No	Orders	Families	Latin name	Habitats	IUCN
358			<i>Ctenochaetus striatus</i> Quoy & Gaimard, 1825	Marine, Mangrove, Coral reef	Least concern
359			<i>Naso annulatus</i> Quoy & Gaimard, 1825	Marine, Mangrove, Coral reef	Least concern
360			<i>Naso hexacanthus</i> Bleeker, 1855	Marine, Mangrove, Coral reef	Least concern
361			<i>Naso lituratus</i> Forster, 1801	Marine, Mangrove, Coral reef	Least concern
362			<i>Naso unicornis</i> Forsskål, 1775	Marine, Mangrove, Coral reef	Least concern
363			<i>Paracanthurus hepatus</i> Linnaeus, 1766	Marine, Mangrove, Coral reef	Least concern
364			<i>Zebrasoma flavescens</i> Bennett, 1828	Marine, Mangrove, Coral reef	Least concern
365			<i>Zebrasoma scopas</i> Cuvier, 1829	Marine, Mangrove, Coral reef	Least concern
366			<i>Zebrasoma velifer</i> Bloch, 1795	Marine, Mangrove, Coral reef	Least concern
367		Acropomatidae	<i>Acropoma japonicum</i> Günther, 1859	Marine	Not evaluated
368	<i>Doederleinia berycoides</i> Hilgendorf, 1879		Marine	Not evaluated	
369	<i>Parascombrops philippinensis</i> Günther, 1880		Marine	Not evaluated	
370		Ambassidae	<i>Ambassis ambassis</i> Lacepède, 1802	Marine	Least concern
371			<i>Ambassis buruensis</i> Bleeker, 1856	Marine	Not evaluated
372			<i>Ambassis gymnocephalus</i> Lacepède, 1802	Marine, Mangrove, Coral reef, Intertidal	Least concern
373			<i>Ambassis interrupta</i> Bleeker, 1853	Marine, Mangrove, Coral reef	Least concern
374			<i>Ambassis kopsii</i> Bleeker, 1858	Marine	Not evaluated
375			<i>Ambassis marianus</i> Günther, 1880	Marine, Mangrove, Coral reef	Least concern
376			<i>Ambassis urotaenia</i> Bleeker, 1852	Marine, Mangrove, Coral reef, Intertidal	Least concern
377			<i>Ambassis vachellii</i> Richardson, 1846	Marine	Least concern
378		Anabantidae	<i>Anabas testudineus</i> Bloch, 1792	Marine, Mangrove, Coral reef	Least concern
379		Apogonidae	<i>Apogon coccineus</i> Rüppell, 1838	Marine, Mangrove, Coral reef	Not evaluated
380			<i>Apogonichthyoides cathetogramma</i> Tanaka, 1917	Marine, Mangrove, Coral reef	Not evaluated
381			<i>Apogonichthyoides niger</i> Döderlein, 1883	Marine, Mangrove, Coral reef	Not evaluated
382			<i>Jaydia carinatus</i> Cuvier, 1828	Marine, Mangrove, Coral reef	Not evaluated
383			<i>Jaydia lineata</i> Temminck & Schlegel, 1842	Marine, Mangrove, Coral reef	Not evaluated

Table continued on next page.....

No	Orders	Families	Latin name	Habitats	IUCN
384			<i>Ostorhinchus moluccensis</i> Valenciennes, 1832	Marine, Mangrove, Coral reef	Not evaluated
385			<i>Ostorhinchus semilineatus</i> Temminck & Schlegel, 1842	Marine, Mangrove, Coral reef	Data deficient
386			<i>Apogonichthyoides sialis</i> Jordan & Thompson, 1914	Marine, Mangrove, Coral reef	Not evaluated
387			<i>Apogonichthyoides taeniatus</i> Cuvier, 1828	Marine, Mangrove, Coral reef	Not evaluated
388			<i>Apogonichthyoides timorensis</i> Bleeker, 1854	Marine, Mangrove, Coral reef	Not evaluated
389			<i>Cheilodipterus artus</i> Smith, 1961	Marine, Mangrove, Coral reef	Not evaluated
390			<i>Cheilodipterus intermedius</i> Gon, 1993	Marine, Mangrove, Coral reef	Not evaluated
391			<i>Cheilodipterus macrodon</i> Lacepède, 1802	Marine, Mangrove, Coral reef	Not evaluated
392			<i>Cheilodipterus quinquelineatus</i> Cuvier, 1828	Marine, Mangrove, Coral reef	Not evaluated
393			<i>Fibramia amboinensis</i> Bleeker, 1853	Marine, Mangrove, Coral reef	Data deficient
394			<i>Fibramia lateralis</i> Valenciennes, 1832	Marine, Mangrove, Coral reef	Least concern
395			<i>Fowleria aurita</i> Valenciennes, 1831	Marine, Mangrove, Coral reef	Not evaluated
396			<i>Fowleria marmorata</i> Alleyne & MacLeay, 1877	Marine, Mangrove, Coral reef	Not evaluated
397			<i>Jaydia ellioti</i> Day, 1875	Marine, Mangrove, Coral reef	Not evaluated
398			<i>Jaydia poeciloptera</i> Cuvier, 1828	Marine, Mangrove, Coral reef	Not evaluated
399			<i>Jaydia striata</i> Smith & Radcliffe, 1912	Marine, Mangrove, Coral reef	Not evaluated
400			<i>Jaydia striatodes</i> Gon, 1997	Marine, Mangrove, Coral reef	Not evaluated
401			<i>Jaydia truncata</i> Bleeker, 1855	Marine, Mangrove, Coral reef	Not evaluated
402			<i>Nectamia fusca</i> Quoy & Gaimard, 1825	Marine, Mangrove, Coral reef	Least concern
403			<i>Nectamia savayensis</i> Günther, 1872	Marine, Mangrove, Coral reef	Not evaluated
404			<i>Ostorhinchus angustatus</i> Smith & Radcliffe, 1911	Marine, Mangrove, Coral reef	Not evaluated
405			<i>Ostorhinchus apogonoides</i> Bleeker, 1856	Marine, Mangrove, Coral reef	Not evaluated
406			<i>Ostorhinchus aureus</i> Lacepède, 1802	Marine, Mangrove, Coral reef	Not evaluated
407			<i>Ostorhinchus cavitensis</i> Jordan & Seale, 1907	Marine, Mangrove, Coral reef	Not evaluated

*Table continued on next page.....*

No	Orders	Families	Latin name	Habitats	IUCN
408			<i>Ostorhinchus chrysopomus</i> Bleeker, 1854	Marine, Mangrove, Coral reef	Not evaluated
409			<i>Ostorhinchus cookii</i> Macleay, 1881	Marine, Mangrove, Coral reef	Not evaluated
410			<i>Ostorhinchus cyanosoma</i> Bleeker, 1853	Marine, Mangrove, Coral reef	Not evaluated
411			<i>Ostorhinchus doederleini</i> Jordan & Snyder, 1901	Marine, Mangrove, Coral reef	Not evaluated
412			<i>Ostorhinchus endekataenia</i> Bleeker, 1852	Marine, Mangrove, Coral reef	Not evaluated
413			<i>Ostorhinchus fasciatus</i> White, 1790	Marine, Mangrove, Coral reef	Not evaluated
414			<i>Ostorhinchus fleurieu</i> Lacepède, 1802	Marine, Mangrove, Coral reef	Least concern
415			<i>Ostorhinchus kiensis</i> Jordan & Snyder, 1901	Marine, Mangrove, Coral reef	Not evaluated
416			<i>Ostorhinchus novemfasciatus</i> Cuvier, 1828	Marine, Mangrove, Coral reef	Not evaluated
417			<i>Ostorhinchus pleuron</i> Fraser, 2005	Marine, Mangrove, Coral reef	Not evaluated
418			<i>Pristiapogon kallopterus</i> Bleeker, 1856	Marine, Mangrove, Coral reef	Not evaluated
419			<i>Sphaeramia nematoptera</i> Bleeker, 1856	Marine, Mangrove, Coral reef	Not evaluated
420			<i>Taeniamia fucata</i> Cantor, 1849	Marine, Mangrove, Coral reef	Not evaluated
421			<i>Taeniamia macroptera</i> Cuvier, 1828	Marine, Mangrove, Coral reef	Not evaluated
422			<i>Taeniamia zosterophora</i> Bleeker, 1856	Marine, Mangrove, Coral reef	Not evaluated
423		Banjosidae	<i>Banjos banjos</i> Richardson, 1846	Marine	Not evaluated
424		Belontiidae	<i>Macropodus opercularis</i> Linnaeus, 1758	Marine, Mangrove, Coral reef	Least concern
425		Blenniidae	<i>Aspidontus taeniatus</i> Quoy & Gaimard, 1834	Marine, Mangrove, Coral reef	Least concern
426			<i>Cirripectes stigmaticus</i> Strasburg & Schultz, 1953	Marine, Mangrove, Coral reef	Least concern
427			<i>Omobranchus punctatus</i> (Valenciennes, 1836)	Marine, Mangrove, Coral reef	Least concern
428			<i>Ecsenius melarchus</i> McKinney & Springer, 1976	Marine, Mangrove, Coral reef	Least concern
429			<i>Ecsenius yaeyamaensis</i> Aoyagi, 1954	Marine, Mangrove, Coral reef	Least concern
430			<i>Exallias brevis</i> Kner, 1868	Marine, Mangrove, Coral reef	Least concern
431			<i>Laiphognathus multimaculatus</i> Smith, 1955	Marine, Mangrove, Coral reef	Least concern

Table continued on next page.....

No	Orders	Families	Latin name	Habitats	IUCN
432			<i>Meiacanthus grammistes</i> Valenciennes, 1836	Marine, Mangrove, Coral reef	Least concern
433			<i>Omobranchus elegans</i> Steindachner, 1876	Marine, Mangrove, Coral reef, Intertidal	Least concern
434			<i>Omobranchus elongatus</i> Peters, 1855	Marine, Mangrove, Coral reef	Least concern
435			<i>Omobranchus fasciolatoiceps</i> Richardson, 1846	Marine, Mangrove, Coral reef	Least concern
436			<i>Omobranchus ferox</i> Herre, 1927	Marine, Mangrove, Coral reef, Intertidal	Least concern
437			<i>Parablennius yatabei</i> Jordan & Snyder, 1900	Marine, Mangrove, Coral reef	Least concern
438			<i>Parenchelyurus hepburni</i> Snyder, 1908	Marine, Mangrove, Coral reef	Least concern
439			<i>Petroscirtes breviceps</i> Valenciennes, 1836	Marine, Mangrove, Coral reef	Least concern
440			<i>Petroscirtes variabilis</i> Cantor, 1849	Marine, Mangrove, Coral reef	Least concern
441			<i>Istiblennius dussumieri</i> Valenciennes, 1836	Marine, Mangrove, Coral reef, Intertidal	Least concern
442			<i>Salarias fasciatus</i> Bloch, 1786	Marine, Mangrove, Coral reef	Least concern
443			<i>Salarias guttatus</i> Valenciennes, 1836	Marine, Mangrove, Coral reef	Least concern
444			<i>Xiphasia setifer</i> Swainson, 1839	Marine, Mangrove, Coral reef	Least concern
445		Bramidae	<i>Brama japonica</i> Hilgendorf, 1878	Marine	Not evaluated
446		Caesionidae	<i>Caesio cuning</i> Bloch, 1791	Marine, Mangrove, Coral reef	Least concern
447			<i>Caesio teres</i> Seale, 1906	Marine, Mangrove, Coral reef	Least concern
448			<i>Caesio caerulea</i> Lacepède, 1801	Marine, Mangrove, Coral reef	Least concern
449			<i>Pterocaesio chrysozona</i> Cuvier, 1830	Marine, Mangrove, Coral reef	Least concern
450			<i>Pterocaesio digramma</i> Bleeker, 1864	Marine, Mangrove, Coral reef	Least concern
451			<i>Pterocaesio tessellata</i> Carpenter, 1987	Marine, Mangrove, Coral reef	Least concern
452		Callanthiidae	<i>Callanthias japonicus</i> Franz, 1910	Marine	Not evaluated
453		Callionymidae	<i>Bathycallionymus kaianus</i> Günther, 1880	Marine, Mangrove, Coral reef, Intertidal	Not evaluated
454			<i>Callionymus beniteguri</i> Jordan & Snyder, 1900	Marine	Not evaluated
455			<i>Callionymus curvicornis</i> Valenciennes, 1837	Marine, Mangrove, Coral reef	Not evaluated
456			<i>Callionymus doryssus</i> Jordan & Fowler, 1903	Marine, Mangrove, Coral reef	Not evaluated

*Table continued on next page.....*

No	Orders	Families	Latin name	Habitats	IUCN
457			<i>Callionymus filamentosus</i> Valenciennes, 1837	Marine, Mangrove, Coral reef	Not evaluated
458			<i>Callionymus hainanensis</i> Li, 1966	Marine, Mangrove, Coral reef	Not evaluated
459			<i>Callionymus hindsii</i> Richardson, 1844	Marine, Mangrove, Coral reef	Not evaluated
460			<i>Callionymus japonicus</i> Houttuyn, 1782	Marine, Mangrove, Coral reef	Not evaluated
461			<i>Callionymus lunatus</i> Temminck & Schlegel, 1845	Marine, Mangrove, Coral reef	Not evaluated
462			<i>Callionymus marquesensis</i> Fricke, 1989	Marine, Mangrove, Coral reef	Not evaluated
463			<i>Callionymus meridionalis</i> Suwardji, 1965	Marine, Mangrove, Coral reef	Not evaluated
464			<i>Callionymus octostigmatus</i> Fricke, 1981	Marine, Mangrove, Coral reef	Not evaluated
465			<i>Callionymus regani</i> Nakabo, 1979	Marine	Not evaluated
466			<i>Callionymus schaapii</i> Bleeker, 1852	Marine, Mangrove, Coral reef	Not evaluated
467			<i>Callionymus valenciennesi</i> Temminck & Schlegel, 1845	Marine, Mangrove, Coral reef	Not evaluated
468			<i>Dactylopus dactylopus</i> Valenciennes, 1837	Marine, Mangrove, Coral reef	Not evaluated
469			<i>Repomucenus huguenini</i> Bleeker, 1858	Marine, Mangrove, Coral reef	Not evaluated
470			<i>Repomucenus olidus</i> Günther, 1873	Marine, Mangrove, Coral reef	Not evaluated
471			<i>Repomucenus virgis</i> Jordan & Fowler, 1903	Marine, Mangrove, Coral reef	Not evaluated
472			<i>Synchiropus altivelis</i> Temminck & Schlegel, 1845	Marine	Not evaluated
473			<i>Synchiropus lateralis</i> Richardson, 1844	Marine, Mangrove, Coral reef	Not evaluated
474			<i>Synchiropus marmoratus</i> Peters, 1855	Marine, Mangrove, Coral reef	Not evaluated
475			<i>Synchiropus morrisoni</i> Schultz, 1960	Marine, Mangrove, Coral reef	Not evaluated
476			<i>Synchiropus sechellensis</i> Regan, 1908	Marine, Mangrove, Coral reef	Not evaluated
477			<i>Synchiropus splendidus</i> Herre, 1927	Marine	Least concern
478		Caproidae	<i>Antigonia rubescens</i> Günther, 1860	Marine	Not evaluated
479		Carangidae	<i>Alectis ciliaris</i> Bloch, 1787	Marine, Mangrove, Coral reef	Least concern
480			<i>Alectis indica</i> Rüppell, 1830	Marine, Mangrove, Coral reef	Least concern
481			<i>Alepes apercna</i> Grant, 1987	Marine	Least concern
482			<i>Alepes djedaba</i> Forsskål, 1775	Marine, Mangrove, Coral reef, Intertidal	Least concern

Table continued on next page.....

No	Orders	Families	Latin name	Habitats	IUCN
483			<i>Alepes kleinii</i> Bloch, 1793	Marine, Mangrove, Coral reef	Least concern
484			<i>Alepes melanoptera</i> Swainson, 1839	Marine, Mangrove, Coral reef	Least concern
485			<i>Alepes vari</i> Cuvier, 1833	Marine	Least concern
486			<i>Atropus atropos</i> Bloch & Schneider, 1801	Marine, Mangrove, Coral reef	Least concern
487			<i>Atule mate</i> Cuvier, 1833	Marine, Mangrove, Coral reef	Least concern
488			<i>Carangoides armatus</i> Rüppell, 1830	Marine, Mangrove, Coral reef	Least concern
489			<i>Carangoides chrysophrys</i> Cuvier, 1833	Marine, Mangrove, Coral reef	Least concern
490			<i>Carangoides coeruleopinnatus</i> Rüppell, 1830	Marine, Mangrove, Coral reef	Least concern
491			<i>Carangoides equula</i> Temminck & Schlegel, 1844	Marine	Least concern
492			<i>Carangoides ferdau</i> Forsskål, 1775	Marine	Least concern
493			<i>Carangoides gymnostethus</i> Cuvier, 1833	Marine	Least concern
494			<i>Carangoides malabaricus</i> Bloch & Schneider, 1801	Marine, Mangrove, Coral reef	Least concern
495			<i>Carangoides oblongus</i> Cuvier, 1833	Marine	Least concern
496			<i>Carangoides praeustus</i> Anonymous [Bennett], 1830	Marine, Mangrove, Coral reef	Least concern
497			<i>Caranx bucculentus</i> Alleyne & Macleay, 1877	Marine	Least concern
498			<i>Caranx ignobilis</i> Forsskål, 1775	Marine	Least concern
499			<i>Caranx sexfasciatus</i> Quoy & Gaimard, 1825	Marine, Mangrove, Coral reef, Intertidal	Least concern
500			<i>Decapterus kurroides</i> Bleeker, 1855	Marine	Least concern
501			<i>Decapterus macrosoma</i> Bleeker, 1851	Marine	Least concern
502			<i>Decapterus maruadsi</i> Temminck & Schlegel, 1843	Marine, Mangrove, Coral reef	Least concern
503			<i>Decapterus russelli</i> Rüppell, 1830	Marine	Least concern
504			<i>Elagatis bipinnulata</i> Quoy & Gaimard, 1825	Marine	Least concern
505			<i>Gnathanodon speciosus</i> Forsskål, 1775	Marine, Mangrove, Coral reef	Least concern
506			<i>Megalaspis cordyla</i> Linnaeus, 1758	Marine, Mangrove, Coral reef	Least concern
507			<i>Naucrates ductor</i> Linnaeus, 1758	Marine	Least concern
508			<i>Parastromateus niger</i> Bloch, 1795	Marine, Mangrove, Coral reef	Least concern
509			<i>Scomberoides commersonianus</i> Lacepède, 1801	Marine	Least concern
510			<i>Scomberoides lysan</i> Forsskål, 1775	Marine, Mangrove, Coral reef	Least concern
511			<i>Scomberoides tala</i> Cuvier, 1832	Marine, Mangrove, Coral reef	Least concern
512			<i>Scomberoides tol</i> Cuvier, 1832	Marine	Least concern
513			<i>Selar boops</i> Cuvier, 1833	Marine	Least concern

*Table continued on next page.....*

No	Orders	Families	Latin name	Habitats	IUCN
514			<i>Selar crumenophthalmus</i> Bloch, 1793	Marine	Least concern
515			<i>Selaroides leptolepis</i> Cuvier, 1833	Marine, Mangrove, Coral reef	Least concern
516			<i>Seriola dumerili</i> Risso, 1810	Marine	Least concern
517			<i>Seriola fasciata</i> Bloch, 1793	Marine	Least concern
518			<i>Seriola lalandi</i> Valenciennes, 1833	Marine	Least concern
519			<i>Seriola quinqueradiata</i> Temminck & Schlegel, 1845	Marine	Least concern
520			<i>Seriolina nigrofasciata</i> Rüppell, 1829	Marine	Least concern
521			<i>Trachinotus baillonii</i> Lacepède, 1801	Marine	Least concern
522			<i>Trachinotus blochii</i> Lacepède, 1801	Marine	Least concern
523			<i>Trachinotus botla</i> Shaw, 1803	Marine	Least concern
524			<i>Trachinotus mookalee</i> Cuvier, 1832	Marine	Least concern
525			<i>Trachinotus ovatus</i> Linnaeus, 1758	Marine, Mangrove, Coral reef	Least concern
526			<i>Trachurus japonicus</i> Temminck & Schlegel, 1844	Marine, Mangrove, Coral reef	Near threatened
527			<i>Ulua mentalis</i> Cuvier, 1833	Marine, Mangrove, Coral reef	Least concern
528			<i>Uraspis helvola</i> Forster, 1801	Marine	Least concern
529			<i>Uraspis secunda</i> Poey, 1860	Marine	Least concern
530		Centrolophi- dae	<i>Psenopsis anomala</i> Temminck & Schlegel, 1844	Marine, Mangrove, Coral reef	Least concern
531			<i>Psenopsis shojimai</i> Ochiai & Mori, 1965	Marine	Not evaluated
532		Cepolidae	<i>Acanthocephala abbreviata</i> Valenciennes, 1835	Marine	Not evaluated
533			<i>Acanthocephala indica</i> Day, 1888	Marine, Mangrove, Coral reef	Not evaluated
534			<i>Acanthocephala krusensternii</i> Tem- minck & Schlegel, 1845	Marine	Not evaluated
535			<i>Acanthocephala limbata</i> Valenciennes, 1835	Marine	Not evaluated
536			<i>Cepola schlegelii</i> Bleeker, 1854	Marine	Not evaluated
537		Chaetodon- tidae	<i>Chaetodon adiergastos</i> Seale, 1910	Marine, Mangrove, Coral reef	Least concern
538			<i>Chaetodon auriga</i> Forsskål, 1775	Marine, Mangrove, Coral reef	Least concern
539			<i>Chaetodon auripes</i> Jordan & Snyder, 1901	Marine, Mangrove, Coral reef	Least concern
540			<i>Chaetodon baronessa</i> Cuvier, 1829	Marine, Mangrove, Coral reef	Least concern
541			<i>Chaetodon ephippium</i> Cuvier, 1831	Marine, Mangrove, Coral reef	Least concern
542			<i>Chaetodon falcula</i> Bloch, 1795	Marine, Mangrove, Coral reef	Least concern
543			<i>Chaetodon kleinii</i> Bloch, 1790	Marine, Mangrove, Coral reef	Least concern
544			<i>Chaetodon lineolatus</i> Cuvier, 1831	Marine, Mangrove, Coral reef	Least concern

Table continued on next page.....

No	Orders	Families	Latin name	Habitats	IUCN
545			<i>Chaetodon lunula</i> Lacepède, 1802	Marine, Mangrove, Coral reef	Least concern
546			<i>Chaetodon lunulatus</i> Quoy & Gaimard, 1825	Marine, Mangrove, Coral reef	Least concern
547			<i>Chaetodon melannotus</i> Bloch & Schneider, 1801	Marine, Mangrove, Coral reef	Least concern
548			<i>Chaetodon octofasciatus</i> Bloch, 1787	Marine, Mangrove, Coral reef	Least concern
549			<i>Chaetodon rafflesii</i> Anonymous [Bennett], 1830	Marine, Mangrove, Coral reef	Least concern
550			<i>Chaetodon speculum</i> Cuvier, 1831	Marine, Mangrove, Coral reef	Least concern
551			<i>Chaetodon triangulum</i> Cuvier, 1831	Marine, Mangrove, Coral reef	Least concern
552			<i>Chaetodon trifascialis</i> Quoy & Gaimard, 1825	Marine, Mangrove, Coral reef	Near threatened
553			<i>Chaetodon trifasciatus</i> Park, 1797	Marine, Mangrove, Coral reef	Least concern
554			<i>Chaetodon wiebeli</i> Kaup, 1863	Marine, Mangrove, Coral reef	Least concern
555			<i>Roa excelsa</i> Jordan, 1921	Marine, Mangrove, Coral reef	Least concern
556			<i>Roa modesta</i> Temminck & Schlegel, 1844	Marine, Mangrove, Coral reef	Least concern
557			<i>Chelmon muelleri</i> Klunzinger, 1879	Marine, Mangrove, Coral reef	Least concern
558			<i>Chelmon rostratus</i> Linnaeus, 1758	Marine, Mangrove, Coral reef	Least concern
559			<i>Coradion altivelis</i> McCulloch, 1916	Marine, Mangrove, Coral reef	Least concern
560			<i>Coradion chrysozonus</i> Cuvier, 1831	Marine, Mangrove, Coral reef	Least concern
561			<i>Forcipiger flavissimus</i> Jordan & McGregor, 1898	Marine, Mangrove, Coral reef	Least concern
562			<i>Forcipiger longirostris</i> Broussonet, 1782	Marine, Mangrove, Coral reef	Least concern
563			<i>Heniochus acuminatus</i> Linnaeus, 1758	Marine, Mangrove, Coral reef	Least concern
564			<i>Heniochus chrysostomus</i> Cuvier, 1831	Marine, Mangrove, Coral reef	Least concern
565			<i>Heniochus diphreutes</i> Jordan, 1903	Marine, Mangrove, Coral reef	Least concern
566			<i>Heniochus monoceros</i> Cuvier, 1831	Marine, Mangrove, Coral reef	Least concern
567			<i>Heniochus singularius</i> Smith & Radcliffe, 1911	Marine, Mangrove, Coral reef	Least concern

*Table continued on next page.....*



No	Orders	Families	Latin name	Habitats	IUCN
568			<i>Parachaetodon ocellatus</i> Cuvier, 1831	Marine, Mangrove, Coral reef	Least concern
569		Champsodontidae	<i>Champsodon atridorsalis</i> Ochiai & Nakamura, 1964	Marine	Not evaluated
570			<i>Champsodon capensis</i> Regan, 1908	Marine, Mangrove, Coral reef	Least concern
571			<i>Champsodon snyderi</i> Franz, 1910	Marine	Not evaluated
572			<i>Champsodon vorax</i> Günther, 1867	Marine	Not evaluated
573		Channidae	<i>Channa maculata</i> Lacepède, 1801	Marine, Mangrove, Coral reef	Least concern
574			<i>Channa striata</i> Bloch, 1793	Marine	Least concern
575		Cheilodactylidae	<i>Goniistius quadricornis</i> Günther, 1860	Marine	Not evaluated
576			<i>Goniistius zonatus</i> Cuvier, 1830	Marine	Not evaluated
577		Cichlidae	<i>Coptodon zillii</i> Gervais, 1848	Marine, Mangrove, Coral reef	Least concern
578			<i>Oreochromis aureus</i> Steindachner, 1864	Marine	Not evaluated
579			<i>Oreochromis mossambicus</i> Peters, 1852	Marine, Mangrove, Coral reef, Intertidal	Vulnerable
580			<i>Oreochromis niloticus</i> Linnaeus, 1758	Marine, Mangrove, Coral reef	Least concern
581		Cirrhitidae	<i>Cirrhitichthys aureus</i> Temminck & Schlegel, 1842	Marine	Not evaluated
582			<i>Cirrhitichthys falco</i> Randall, 1963	Marine, Mangrove, Coral reef	Least concern
583			<i>Cirrhitis pinnulatus</i> Forster, 1801	Marine, Mangrove, Coral reef	Least concern
584		Congrogadidea	<i>Congrogadus subducens</i> Richardson, 1843	Marine	Least concern
585		Coryphaenidae	<i>Coryphaena equiselis</i> Linnaeus, 1758	Marine	Least concern
586			<i>Coryphaena hippurus</i> Linnaeus, 1758	Marine	Least concern
587		Drepanidae	<i>Drepane longimana</i> Bloch & Schneider, 1801	Marine, Mangrove, Coral reef	Not evaluated
588			<i>Drepane punctata</i> Linnaeus, 1758	Marine, Mangrove, Coral reef	Not evaluated
589		Echeneidae	<i>Echeneis naucrates</i> Linnaeus, 1758*	Marine, Mangrove, Coral reef	Least concern
590		Eleotridae	<i>Asterropteryx semipunctata</i> Rüppell, 1830	Marine	Least concern
591			<i>Bostrychus sinensis</i> Lacepède, 1801	Marine, Mangrove, Coral reef, Intertidal	Least concern
592			<i>Butis butis</i> Hamilton, 1822	Marine, Mangrove, Coral reef, Intertidal	Least concern
593			<i>Butis gymnopomus</i> Bleeker, 1853	Marine, Mangrove, Coral reef	Least concern
594			<i>Butis koilomatodon</i> Bleeker, 1849	Marine, Mangrove, Coral reef, Intertidal	Not evaluated
595			<i>Eleotris acanthopomus</i> Bleeker, 1853	Marine	Least concern

Table continued on next page.....

No	Orders	Families	Latin name	Habitats	IUCN
596			<i>Eleotris fusca</i> Forster, 1801	Marine	Least concern
597			<i>Eleotris melanosoma</i> Bleeker, 1853	Marine, Mangrove, Coral reef	Least concern
598			<i>Eleotris oxycephala</i> Temminck & Schlegel, 1845	Marine, Mangrove, Coral reef	Least concern
599			<i>Odontobutis sinensis</i> Wu, Chen & Chong, 2002	Marine	Not evaluated
600			<i>Ophiocara porocephala</i> Valenciennes, 1837	Marine, Mangrove, Coral reef	Least concern
601			<i>Prionobutis dasyrhynchus</i> Günther, 1868	Marine, Mangrove, Coral reef	Data deficient
602		Emmelichthyidae	<i>Erythrocles schlegelii</i> Richardson, 1846	Marine	Least concern
603		Ephippidea	<i>Ephippus orbis</i> Bloch, 1787	Marine, Mangrove, Coral reef	Not evaluated
604		Gempylidae	<i>Rexea prometheoides</i> Bleeker, 1856	Marine	Not evaluated
605		Gerreidae	<i>Gerres decacanthus</i> Bleeker, 1864	Marine, Mangrove, Coral reef	Not evaluated
606			<i>Gerres erythrourus</i> Bloch, 1791	Marine	Least concern
607			<i>Gerres filamentosus</i> Cuvier, 1829	Marine, Mangrove, Coral reef	Least concern
608			<i>Gerres japonicus</i> Bleeker, 1854	Marine, Mangrove, Coral reef	Not evaluated
609			<i>Gerres limbatus</i> Cuvier, 1830	Marine, Mangrove, Coral reef	Least concern
610			<i>Gerres longirostris</i> Lacepède, 1801	Marine, Mangrove, Coral reef	Least concern
611			<i>Gerres macracanthus</i> Bleeker, 1854	Marine	Not evaluated
612			<i>Gerres oblongus</i> Cuvier, 1830	Marine	Least concern
613			<i>Gerres oyena</i> Forsskål, 1775	Marine, Mangrove, Coral reef	Least concern
614			<i>Gerres septemfasciatus</i> Liu & Yan, 2009	Marine	Not evaluated
615			<i>Gerres shima</i> Iwatsuki, Kimura & Yoshino, 2007	Marine	Not evaluated
616			<i>Pentaprion longimanus</i> Cantor, 1849	Marine, Mangrove, Coral reef	Least concern
617		Girellidae	<i>Girella punctata</i> Gray, 1835	Marine	Not evaluated
618		Glaucosomatidae	<i>Glaucosoma buergeri</i> Richardson, 1845	Marine	Not evaluated
619		Gobiidae	<i>Acanthogobius flavimanus</i> Temminck & Schlegel, 1845	Marine	Least concern
620			<i>Acanthogobius stigmatonius</i> Richardson, 1845	Marine	Not evaluated
621			<i>Acentrogobius audax</i> Smith, 1959	Marine	Least concern
622			<i>Acentrogobius caninus</i> Valenciennes, 1837	Marine, Mangrove, Coral reef, Intertidal	Least concern
623			<i>Acentrogobius janthinopterus</i> Bleeker, 1853	Marine, Mangrove, Coral reef	Least concern
624			<i>Acentrogobius nebulosus</i> Forsskål, 1775	Marine, Mangrove, Coral reef	Least concern

*Table continued on next page.....*

No	Orders	Families	Latin name	Habitats	IUCN
625			<i>Acentrogobius pflaumii</i> Bleeker, 1853	Marine, Mangrove, Coral reef	Not evaluated
626			<i>Acentrogobius viganensis</i> Steindachner, 1893	Marine, Mangrove, Coral reef	Not evaluated
627			<i>Acentrogobius viridipunctatus</i> Valenciennes, 1837	Marine, Mangrove, Coral reef, Intertidal	Least concern
628			<i>Drombus ocyurus</i> Jordan & Seale, 1907	Marine	Not evaluated
629			<i>Amblychaeturichthys hexanema</i> Bleeker, 1853	Marine	Not evaluated
630			<i>Amblyeleotris fontanesii</i> Bleeker, 1853	Marine, Mangrove, Coral reef	Least concern
631			<i>Amblyeleotris gymnocephala</i> Bleeker, 1853	Marine	Least concern
632			<i>Amblyeleotris periophthalma</i> Bleeker, 1853	Marine, Mangrove, Coral reef	Least concern
633			<i>Amblyeleotris wheeleri</i> Polunin & Lubbock, 1977	Marine, Mangrove, Coral reef	Least concern
634			<i>Amblygobius albimaculatus</i> Rüppell, 1830	Marine	Least concern
635			<i>Amblygobius bynoensis</i> Richardson, 1844	Marine	Least concern
636			<i>Amblygobius decussatus</i> Bleeker, 1855	Marine, Mangrove, Coral reef	Least concern
637			<i>Amblygobius phalaena</i> Valenciennes, 1837	Marine, Mangrove, Coral reef	Least concern
638			<i>Amblyotrypauchen arctocephalus</i> Alcock, 1890	Marine	Least concern
639			<i>Acentrogobius chlorostigmatoides</i> Bleeker, 1849	Marine, Mangrove, Coral reef, Intertidal	Not evaluated
640			<i>Amoya madraspatensis</i> Day, 1868	Marine	Not evaluated
641			<i>Anchoviella brevirostris</i> Günther, 1868	Marine, Mangrove, Coral reef	Least concern
642			<i>Apocryptodon madurensis</i> Bleeker, 1849	Marine, Mangrove, Coral reef	Not evaluated
643			<i>Apocryptodon punctatus</i> Tomiyama, 1934	Marine, Mangrove, Coral reef	Least concern
644			<i>Arcygobius baliurus</i> Valenciennes, 1837	Marine	Data deficient
645			<i>Aulopareia atripinnata</i> Smith, 1931	Marine, Mangrove, Coral reef	Not evaluated
646			<i>Aulopareia unicolor</i> Valenciennes, 1837	Marine	Least concern
647			<i>Awaous melanocephalus</i> Bleeker, 1849	Marine, Mangrove, Coral reef	Data deficient
648			<i>Awaous ocellaris</i> Broussonet, 1782	Marine	Least concern
649			<i>Bathygobius fuscus</i> Rüppell, 1830	Marine, Mangrove, Coral reef, Intertidal	Least concern
650			<i>Bathygobius hongkongensis</i> Lam, 1986	Marine, Mangrove, Coral reef	Not evaluated
651			<i>Boleophthalmus pectinirostris</i> Linnaeus, 1758	Marine, Mangrove, Coral reef, Intertidal	Not evaluated
652			<i>Brachyamblyopus brachysoma</i> Bleeker, 1854	Marine, Mangrove, Coral reef	Not evaluated
653			<i>Karsten totoyensis</i> Garman, 1903	Marine	Not evaluated

Table continued on next page.....

No	Orders	Families	Latin name	Habitats	IUCN
654			<i>Caragobius urolepis</i> Bleeker, 1852	Marine, Mangrove, Coral reef	Least concern
655			<i>Chaeturichthys stigmatias</i> Richardson, 1844	Marine, Mangrove, Coral reef	Not evaluated
656			<i>Cryptocentrus caeruleomaculatus</i> Herre, 1933	Marine	Least concern
657			<i>Cryptocentrus leptcephalus</i> Bleeker, 1876	Marine, Mangrove, Coral reef	Least concern
658			<i>Cryptocentrus pavoninoides</i> Bleeker, 1849	Marine, Mangrove, Coral reef	Data deficient
659			<i>Cryptocentrus yatsui</i> Tomiyama, 1936	Marine, Mangrove, Coral reef, Intertidal	Not evaluated
660			<i>Tomiyamichthys russus</i> Cantor, 1849	Marine	Not evaluated
661			<i>Ctenogobiops formosa</i> Randall, Shao & Chen, 2003	Marine, Mangrove, Coral reef	Not evaluated
662			<i>Ctenogobiops mitodes</i> Randall, Shao & Chen, 2007	Marine	Not evaluated
663			<i>Ctenogobius chusanensis</i> Herre, 1940	Marine, Mangrove, Coral reef, Intertidal	Not evaluated
664			<i>Gymnogobius urotaenia</i> Hilgendorf, 1879	Marine, Mangrove, Coral reef	Not evaluated
665			<i>Ctenotrypauchen chinensis</i> Steindachner, 1867	Marine, Mangrove, Coral reef	Not evaluated
666			<i>Drombus palackyi</i> Jordan & Seale, 1905	Marine	Not evaluated
667			<i>Drombus triangularis</i> Weber, 1909	Marine, Mangrove, Coral reef	Least concern
668			<i>Eviota albolineata</i> Jewett & Lachner, 1983	Marine, Mangrove, Coral reef	Least concern
669			<i>Eviota storthynx</i> Rofen, 1959	Marine	Least concern
670			<i>Exyrias belissimus</i> Smith, 1959	Marine, Mangrove, Coral reef	Least concern
671			<i>Exyrias puntang</i> Bleeker, 1851	Marine, Mangrove, Coral reef	Least concern
672			<i>Favonigobius gymnauchen</i> Bleeker, 1860	Marine, Mangrove, Coral reef, Intertidal	Not evaluated
673			<i>Favonigobius reichei</i> Bleeker, 1854	Marine, Mangrove, Coral reef	Least concern
674			<i>Glossogobius circumspectus</i> Macleay, 1883	Marine, Mangrove, Coral reef	Least concern
675			<i>Glossogobius giuris</i> Hamilton, 1822	Marine, Mangrove, Coral reef, Intertidal	Least concern
676			<i>Glossogobius olivaceus</i> Temminck & Schlegel, 1845	Marine, Mangrove, Coral reef	Least concern
677			<i>Gobiopsis macrostoma</i> Steindachner, 1861	Marine	Least concern
678			<i>Gobiopterus lacustris</i> Herre, 1927	Marine, Mangrove, Coral reef	Data deficient
679			<i>Cotylopus rubripinnis</i> Keith, Hoareau & Bosc, 2005	Marine, Mangrove, Coral reef	Vulnerable
680			<i>Istigobius campbelli</i> Jordan & Snyder, 1901	Marine, Mangrove, Coral reef, Intertidal	Not evaluated

*Table continued on next page.....*

No	Orders	Families	Latin name	Habitats	IUCN
681			<i>Istigobius hoshinonis</i> Tanaka, 1917	Marine, Mangrove, Coral reef	Least concern
682			<i>Istigobius ornatus</i> Rüppell, 1830	Marine, Intertidal	Least concern
683			<i>Istigobius spence</i> Smith, 1947	Marine	Least concern
684			<i>Luciogobius guttatus</i> Gill, 1859	Marine, Mangrove, Coral reef	Not evaluated
685			<i>Mahidolia mystacina</i> Valenciennes, 1837	Marine	Least concern
686			<i>Mugilogobius abei</i> Jordan & Snyder, 1901	Marine, Mangrove, Coral reef	Least concern
687			<i>Mugilogobius chulae</i> Smith, 1932	Marine, Mangrove, Coral reef	Least concern
688			<i>Mugilogobius myxodermus</i> Herre, 1935	Marine, Mangrove, Coral reef	Not evaluated
689			<i>Myersina crocata</i> Wongratana, 1975	Marine	Not evaluated
690			<i>Myersina filifer</i> Valenciennes, 1837	Marine, Mangrove, Coral reef, Intertidal	Least concern
691			<i>Myersina macrostoma</i> Herre, 1934	Marine	Not evaluated
692			<i>Myersina papuanus</i> Peters, 1877	Marine, Mangrove, Coral reef	Not evaluated
693			<i>Odontamblyopus lacepedii</i> Temminck & Schlegel, 1845	Marine	Not evaluated
694			<i>Odontamblyopus rubicundus</i> Hamilton, 1822	Marine, Mangrove, Coral reef	Least concern
695			<i>Oligolepis acutipennis</i> Valenciennes, 1837	Marine, Mangrove, Coral reef	Least concern
696			<i>Oligolepis jaarmani</i> Weber, 1913	Marine, Mangrove, Coral reef	Least concern
697			<i>Oplopomus oplopomus</i> Valenciennes, 1837	Marine	Least concern
698			<i>Oxuderces dentatus</i> Eydoux & Souleyet, 1850	Marine, Mangrove, Coral reef	Data deficient
699			<i>Oxyurichthys auchenolepis</i> Bleeker, 1876	Marine	Not evaluated
700			<i>Oxyurichthys microlepis</i> Bleeker, 1849	Marine, Mangrove, Coral reef	Least concern
701			<i>Oxyurichthys ophthalmonema</i> Bleeker, 1856	Marine, Mangrove, Coral reef, Intertidal	Least concern
702			<i>Oxyurichthys papuensis</i> Valenciennes, 1837	Marine, Mangrove, Coral reef, Intertidal	Least concern
703			<i>Oxyurichthys tentacularis</i> Valenciennes, 1837	Marine, Mangrove, Coral reef	Data deficient
704			<i>Oxyurichthys uronema</i> Weber, 1909	Marine	Not evaluated
705			<i>Parachaeturichthys polynema</i> Bleeker, 1853	Marine, Mangrove, Coral reef	Least concern
706			<i>Paragobiodon echinocephalus</i> Rüppell, 1830	Marine	Least concern
707			<i>Paragobiodon xanthosoma</i> Bleeker, 1853	Marine, Intertidal	Least concern
708			<i>Parapocryptes serperaster</i> Richardson, 1846	Marine, Mangrove, Coral reef	Least concern

Table continued on next page.....

No	Orders	Families	Latin name	Habitats	IUCN
709			<i>Paratrypauchen microcephalus</i> Bleeker, 1860	Marine, Mangrove, Coral reef, Intertidal	Least concern
710			<i>Periophthalmus novaeguineensis</i> Eggert, 1935	Marine, Mangrove, Coral reef, Intertidal	Least concern
711			<i>Priolepis semidoliata</i> Valenciennes, 1837	Marine, Mangrove, Coral reef	Least concern
712			<i>Psammogobius biocellatus</i> Valenciennes, 1837	Marine, Mangrove, Coral reef, Intertidal	Least concern
713			<i>Pseudogobius javanicus</i> Bleeker, 1856	Marine, Mangrove, Coral reef	Not evaluated
714			<i>Pseudogobius masago</i> Tomiyama, 1936	Marine, Mangrove, Coral reef	Not evaluated
715			<i>Rhinogobius giurinus</i> Rutter, 1897	Marine, Mangrove, Coral reef	Least concern
716			<i>Scartelaos histophorus</i> Valenciennes, 1837	Marine, Mangrove, Coral reef, Intertidal	Least concern
717			<i>Sicydium brevifile</i> Ogilvie-Grant, 1884	Marine, Mangrove, Coral reef	Least concern
718			<i>Sicyopterus lagocephalus</i> Pallas, 1770	Marine, Mangrove, Coral reef	Least concern
719			<i>Sicyopterus pugnans</i> Ogilvie-Grant, 1884	Marine, Mangrove, Coral reef	Least concern
720			<i>Sicyopus zosterophorus</i> Bleeker, 1856	Marine, Mangrove, Coral reef	Least concern
721			<i>Stenogobius genivittatus</i> Valenciennes, 1837	Marine	Least concern
722			<i>Stiphodon elegans</i> Steindachner, 1879	Marine, Mangrove, Coral reef	Least concern
723			<i>Acanthogobius hasta</i> Temminck & Schlegel, 1845	Marine, Mangrove, Coral reef, Intertidal	Least concern
724			<i>Synechogobius ommaturus</i> Richardson, 1845	Marine, Mangrove, Coral reef	Not evaluated
725			<i>Tridentiger barbatus</i> Günther, 1861	Marine, Mangrove, Coral reef	Not evaluated
726			<i>Tridentiger bifasciatus</i> Steindachner, 1881	Marine, Mangrove, Coral reef	Least concern
727			<i>Tridentiger obscurus</i> Temminck & Schlegel, 1845	Marine, Mangrove, Coral reef	Not evaluated
728			<i>Tridentiger trigonocephalus</i> Gill, 1859	Marine, Mangrove, Coral reef	Least concern
729			<i>Trimma okinawae</i> Aoyagi, 1949	Marine, Mangrove, Coral reef	Least concern
730			<i>Trypauchen pelaeos</i> Murdy, 2006	Marine	Not evaluated
731			<i>Trypauchen vagina</i> Bloch & Schneider, 1801	Marine, Mangrove, Coral reef, Intertidal	Least concern
732			<i>Trypauchenichthys sumatrensis</i> Hardenberg, 1931	Marine, Mangrove, Coral reef	Data deficient
733			<i>Trypauchenopsis intermedia</i> Volz, 1903	Marine	Least concern
734			<i>Valenciennesia immaculata</i> Ni, 1981	Marine	Not evaluated

*Table continued on next page.....*

No	Orders	Families	Latin name	Habitats	IUCN
735			<i>Valenciennesa muralis</i> Valenciennes, 1837	Marine, Mangrove, Coral reef	Least concern
736			<i>Valenciennesa wardii</i> Playfair, 1867	Marine	Least concern
737			<i>Yongeichthys criniger</i> Valenciennes, 1837	Marine, Mangrove, Coral reef	Not evaluated
738		Haemulidae	<i>Diagramma pictum</i> Thunberg, 1792	Marine, Mangrove, Coral reef	Not evaluated
739			<i>Hapalogenys analis</i> Richardson, 1845*	Marine, Mangrove, Coral reef	Not evaluated
740			<i>Hapalogenys kishinouyei</i> Smith & Pope, 1906	Marine	Not evaluated
741			<i>Hapalogenys nigripinnis</i> Temminck & Schlegel, 1843*	Marine	Not evaluated
742			<i>Parapristipoma trilineatum</i> Thunberg, 1793	Marine, Mangrove, Coral reef	Not evaluated
743			<i>Plectorhinchus chaetodonoides</i> Lacepède, 1801	Marine, Mangrove, Coral reef	Not evaluated
744			<i>Plectorhinchus cinctus</i> Temminck & Schlegel, 1843	Marine, Mangrove, Coral reef	Not evaluated
745			<i>Plectorhinchus flavomaculatus</i> Cuvier, 1830	Marine, Mangrove, Coral reef	Not evaluated
746			<i>Plectorhinchus gibbosus</i> Lacepède, 1802	Marine, Mangrove, Coral reef	Least concern
747			<i>Plectorhinchus lessonii</i> Cuvier, 1830	Marine, Mangrove, Coral reef	Not evaluated
748			<i>Plectorhinchus lineatus</i> Linnaeus, 1758	Marine, Mangrove, Coral reef	Not evaluated
749			<i>Plectorhinchus pictus</i> Tortonese, 1936	Marine, Mangrove, Coral reef	Least concern
750			<i>Plectorhinchus schotaf</i> Forsskål, 1775	Marine, Mangrove, Coral reef	Least concern
751			<i>Plectorhinchus vittatus</i> Linnaeus, 1758	Marine, Mangrove, Coral reef	Least concern
752			<i>Pomadasys argenteus</i> Forsskål, 1775	Marine, Mangrove, Coral reef	Least concern
753			<i>Pomadasys argyreus</i> Valenciennes, 1833	Marine	Least concern
754			<i>Pomadasys kaakan</i> Cuvier, 1830	Marine, Mangrove, Coral reef	Not evaluated
755			<i>Pomadasys maculatus</i> Bloch, 1793	Marine, Mangrove, Coral reef	Least concern
756		Histiophoridae	<i>Istiophorus platypterus</i> Shaw, 1792	Marine	Least concern
757		Istiophoridae	<i>Kajikia audax</i> Philippi, 1887	Marine	Near threatened
758		Kyphosidae	<i>Kyphosus bigibbus</i> Lacepède, 1801	Marine	Least concern
759			<i>Kyphosus cinerascens</i> Forsskål, 1775	Marine, Mangrove, Coral reef	Least concern
760			<i>Kyphosus vaigiensis</i> Quoy & Gaimard, 1825	Marine, Mangrove, Coral reef	Least concern

Table continued on next page.....

No	Orders	Families	Latin name	Habitats	IUCN
761			<i>Microcanthus strigatus</i> Cuvier, 1831	Marine, Mangrove, Coral reef	Least concern
762		Labridae	<i>Bodianus axillaris</i> Bennett, 1832	Marine, Mangrove, Coral reef	Least concern
763			<i>Bodianus oxycephalus</i> Bleeker, 1862	Marine, Mangrove, Coral reef	Data deficient
764			<i>Cheilinus chlorourus</i> Bloch, 1791	Marine, Mangrove, Coral reef	Least concern
765			<i>Cheilinus trilobatus</i> Lacepède, 1801	Marine, Mangrove, Coral reef	Least concern
766			<i>Choerodon anchorago</i> Bloch, 1791	Marine, Mangrove, Coral reef	Least concern
767			<i>Choerodon azurio</i> Jordan & Snyder, 1901	Marine, Mangrove, Coral reef	Data deficient
768			<i>Choerodon cyanodus</i> Richardson, 1843	Marine, Mangrove, Coral reef	Least concern
769			<i>Choerodon schoenleinii</i> Valenciennes, 1839	Marine, Mangrove, Coral reef	Near threatened
770			<i>Cirrhilabrus punctatus</i> Randall & Kuitert, 1989	Marine, Mangrove, Coral reef	Least concern
771			<i>Cirrhilabrus temminckii</i> Bleeker, 1853	Marine, Mangrove, Coral reef	Data deficient
772			<i>Coris gaimard</i> Quoy & Gaimard, 1824	Marine, Mangrove, Coral reef	Least concern
773			<i>Coris variegata</i> Rüppell, 1835	Marine, Mangrove, Coral reef	Least concern
774			<i>Epibulus insidiator</i> Pallas, 1770	Marine, Mangrove, Coral reef	Least concern
775			<i>Gomphosus varius</i> Lacepède, 1801	Marine, Mangrove, Coral reef	Least concern
776			<i>Halichoeres argus</i> Bloch & Schneider, 1801	Marine, Mangrove, Coral reef	Least concern
777			<i>Halichoeres bicolor</i> Bloch & Schneider, 1801	Marine, Mangrove, Coral reef	Least concern
778			<i>Halichoeres chrysus</i> Randall, 1981	Marine, Mangrove, Coral reef	Least concern
779			<i>Halichoeres cosmetus</i> Randall & Smith, 1982	Marine, Mangrove, Coral reef	Least concern
780			<i>Halichoeres hortulanus</i> Lacepède, 1801	Marine, Mangrove, Coral reef	Least concern
781			<i>Halichoeres leucoxanthus</i> Randall & Smith, 1982	Marine, Mangrove, Coral reef	Least concern
782			<i>Halichoeres leucurus</i> Walbaum, 1792	Marine, Mangrove, Coral reef	Least concern
783			<i>Halichoeres margaritaceus</i> Valenciennes, 1839	Marine, Mangrove, Coral reef	Least concern
784			<i>Halichoeres marginatus</i> Rüppell, 1835	Marine, Mangrove, Coral reef	Least concern

*Table continued on next page.....*



No	Orders	Families	Latin name	Habitats	IUCN
785			<i>Halichoeres melanochir</i> Fowler & Bean, 1928	Marine, Mangrove, Coral reef	Least concern
786			<i>Halichoeres melanurus</i> Bleeker, 1851	Marine, Mangrove, Coral reef	Least concern
787			<i>Halichoeres nebulosus</i> Valenciennes, 1839	Marine, Mangrove, Coral reef	Least concern
788			<i>Halichoeres nigrescens</i> Bloch & Schneider, 1801	Marine, Mangrove, Coral reef, Intertidal	Least concern
789			<i>Halichoeres ornatissimus</i> Garrett, 1863	Marine, Mangrove, Coral reef	Least concern
790			<i>Halichoeres prosopeion</i> Bleeker, 1853	Marine, Mangrove, Coral reef	Least concern
791			<i>Halichoeres scapularis</i> Bennett, 1832	Marine, Mangrove, Coral reef	Least concern
792			<i>Halichoeres trimaculatus</i> Quoy & Gaimard, 1834	Marine, Mangrove, Coral reef	Least concern
793			<i>Hemigymnus fasciatus</i> Bloch, 1792	Marine, Mangrove, Coral reef	Least concern
794			<i>Hemigymnus melapterus</i> Bloch, 1791	Marine, Mangrove, Coral reef	Least concern
795			<i>Hemigrammus analis</i> Durbin, 1909	Marine, Mangrove, Coral reef	Not evaluated
796			<i>Iniistius dea</i> Temminck & Schlegel, 1845	Marine, Mangrove, Coral reef	Least concern
797			<i>Iniistius trivittatus</i> Randall & Cornish, 2000	Marine, Mangrove, Coral reef	Data deficient
798			<i>Iniistius verrens</i> Jordan & Evermann, 1902	Marine, Mangrove, Coral reef	Least concern
799			<i>Labroides dimidiatus</i> Valenciennes, 1839	Marine, Mangrove, Coral reef	Least concern
800			<i>Leptojulis cyanopleura</i> Bleeker, 1853	Marine, Mangrove, Coral reef	Least concern
801			<i>Macropharyngodon meleagris</i> Valenciennes, 1839	Marine, Mangrove, Coral reef	Least concern
802			<i>Macropharyngodon ornatus</i> Randall, 1978	Marine, Mangrove, Coral reef	Least concern
803			<i>Parajulis poecilepterus</i> Temminck & Schlegel, 1845	Marine, Mangrove, Coral reef	Least concern
804			<i>Pseudocheilinus evanidus</i> Jordan & Evermann, 1903	Marine, Mangrove, Coral reef	Least concern
805			<i>Pseudocheilinus hexataenia</i> Bleeker, 1857	Marine, Mangrove, Coral reef	Least concern
806			<i>Pseudepapterus gracilis</i> Ferraris & Vari, 2000	Marine, Mangrove, Coral reef	Not evaluated
807			<i>Stethojulis bandanensis</i> Bleeker, 1851	Marine, Mangrove, Coral reef	Least concern
808			<i>Stethojulis interrupta</i> Bleeker, 1851	Marine, Mangrove, Coral reef	Least concern

Table continued on next page.....

No	Orders	Families	Latin name	Habitats	IUCN
809			<i>Stethojulis strigiventer</i> Bennett, 1833	Marine, Mangrove, Coral reef	Least concern
810			<i>Stethojulis terina</i> Jordan & Snyder, 1902	Marine, Mangrove, Coral reef	Least concern
811			<i>Stethojulis trilineata</i> Bloch & Schneider, 1801	Marine, Mangrove, Coral reef	Least concern
812			<i>Suezichthys gracilis</i> Steindachner & Döderlein, 1887	Marine, Mangrove, Coral reef	Least concern
813			<i>Thalassoma hardwicke</i> Bennett, 1830	Marine, Mangrove, Coral reef	Least concern
814			<i>Thalassoma lunare</i> Linnaeus, 1758	Marine, Mangrove, Coral reef	Least concern
815			<i>Thalassoma purpureum</i> Forsskål, 1775	Marine, Mangrove, Coral reef	Least concern
816			<i>Xiphocheilus typus</i> Bleeker, 1856	Marine, Mangrove, Coral reef	Least concern
817			<i>Iniistius pavo</i> Valenciennes, 1840	Marine, Mangrove, Coral reef	Least concern
818		Lactariidae	<i>Lactarius lactarius</i> Bloch & Schneider, 1801	Marine, Mangrove, Coral reef	Not evaluated
819		Lateolabracidae	<i>Lateolabrax japonicus</i> Cuvier, 1828*	Marine, Mangrove, Coral reef, Intertidal	Not evaluated
820		Latidae	<i>Lates calcarifer</i> Bloch, 1790	Marine, Mangrove, Coral reef	Least concern
821			<i>Psammoperca waigiensis</i> Cuvier, 1828	Marine, Mangrove, Coral reef	Not evaluated
822		Latimeriidae	<i>Latimeria chalumnae</i> Smith, 1939	Marine	Critically endangered
823		Leiognathidae	<i>Equulites elongatus</i> Günther, 1874	Marine, Mangrove, Coral reef	Not evaluated
824			<i>Equulites lineolatus</i> Valenciennes, 1835	Marine, Mangrove, Coral reef	Not evaluated
825			<i>Equulites oblongus</i> Valenciennes, 1835	Marine	Not evaluated
826			<i>Equulites rivulatus</i> Temminck & Schlegel, 1845	Marine, Mangrove, Coral reef, Intertidal	Not evaluated
827			<i>Eubleekeria jonesi</i> James, 1971	Marine	Not evaluated
828			<i>Eubleekeria splendens</i> Cuvier, 1829	Marine, Mangrove, Coral reef	Least concern
829			<i>Gazza minuta</i> Bloch, 1795	Marine, Mangrove, Coral reef	Least concern
830			<i>Karalla daura</i> Cuvier, 1829	Marine, Mangrove, Coral reef	Not evaluated
831			<i>Karalla dussumieri</i> Valenciennes, 1835	Marine, Mangrove, Coral reef	Not evaluated
832			<i>Aurigequula fasciata</i> Lacepède, 1803	Marine	Least concern
833			<i>Leiognathus berbis</i> Valenciennes, 1835	Marine, Mangrove, Coral reef	Not evaluated
834			<i>Leiognathus brevisrostris</i> Valenciennes, 1835	Marine, Mangrove, Coral reef, Intertidal	Not evaluated

*Table continued on next page.....*

No	Orders	Families	Latin name	Habitats	IUCN
835			<i>Leiognathus equula</i> Forsskål, 1775	Marine, Mangrove, Coral reef, Intertidal	Least concern
836			<i>Nuchequula nuchalis</i> Temminck & Schlegel, 1845	Marine, Mangrove, Coral reef	Not evaluated
837			<i>Photolateralis stercorarius</i> Evermann & Seale, 1907	Marine	Not evaluated
838			<i>Photopectoralis bindus</i> Valenciennes, 1835*	Marine, Mangrove, Coral reef	Not evaluated
839			<i>Nuchequula gerreoides</i> Bleeker, 1851	Marine	Not evaluated
840			<i>Nuchequula longicornis</i> Kimura, Kimura & Ikejima, 2008	Marine	Not evaluated
841			<i>Nuchequula mannusella</i> Chakrabarty & Sparks, 2007	Marine	Not evaluated
842			<i>Deveximentum indicium</i> Monkolprasit, 1973	Marine	Not evaluated
843			<i>Deveximentum insidiator</i> Bloch, 1787	Marine	Not evaluated
844			<i>Deveximentum interruptum</i> Valenciennes, 1835	Marine	Not evaluated
845			<i>Deveximentum megalolepis</i> Mochizuki & Hayashi, 1989	Marine	Not evaluated
846			<i>Leiognathus ruconius</i> Hamilton, 1822	Marine, Mangrove, Coral reef, Intertidal	Not evaluated
847		Lethrinidae	<i>Gymnocranius griseus</i> Temminck & Schlegel, 1843	Marine, Mangrove, Coral reef	Least concern
848			<i>Lethrinus atkinsoni</i> Seale, 1910	Marine, Mangrove, Coral reef	Least concern
849			<i>Lethrinus erythropterus</i> Valenciennes, 1830	Marine, Mangrove, Coral reef	Least concern
850			<i>Lethrinus genivittatus</i> Valenciennes, 1830	Marine, Mangrove, Coral reef	Least concern
851			<i>Lethrinus haematopterus</i> Temminck & Schlegel, 1844	Marine, Mangrove, Coral reef	Not evaluated
852			<i>Lethrinus harak</i> Forsskål, 1775	Marine, Mangrove, Coral reef	Least concern
853			<i>Lethrinus lentjan</i> Lacepède, 1802	Marine, Mangrove, Coral reef	Least concern
854			<i>Lethrinus miniatus</i> Forster, 1801	Marine, Mangrove, Coral reef	Least concern
855			<i>Lethrinus nebulosus</i> Forsskål, 1775	Marine, Mangrove, Coral reef	Least concern
856			<i>Lethrinus olivaceus</i> Valenciennes, 1830	Marine, Mangrove, Coral reef	Least concern
857			<i>Lethrinus ornatus</i> Valenciennes, 1830	Marine, Mangrove, Coral reef	Least concern
858			<i>Lethrinus semicinctus</i> Valenciennes, 1830	Marine, Mangrove, Coral reef	Least concern
859			<i>Lethrinus variegatus</i> Valenciennes, 1830	Marine, Mangrove, Coral reef	Least concern
860			<i>Lethrinus xanthochilus</i> Klunzinger, 1870	Marine, Mangrove, Coral reef	Least concern

Table continued on next page.....

No	Orders	Families	Latin name	Habitats	IUCN
861		Lobotidae	<i>Lobotes surinamensis</i> Bloch, 1790	Marine, Mangrove, Coral reef	Least concern
862		Lutjanidae	<i>Lutjanus argentimaculatus</i> Forsskål, 1775	Marine, Mangrove, Coral reef	Least concern
863			<i>Lutjanus carponotatus</i> Richardson, 1842	Marine	Least concern
864			<i>Lutjanus decussatus</i> Cuvier, 1828	Marine, Mangrove, Coral reef	Least concern
865			<i>Lutjanus ehrenbergii</i> Peters, 1869	Marine, Mangrove, Coral reef	Least concern
866			<i>Lutjanus erythropterus</i> Bloch, 1790	Marine, Mangrove, Coral reef	Least concern
867			<i>Lutjanus fulviflamma</i> Forsskål, 1775	Marine, Mangrove, Coral reef	Least concern
868			<i>Lutjanus fulvus</i> Forster, 1801	Marine, Mangrove, Coral reef	Least concern
869			<i>Lutjanus gibbus</i> Forsskål, 1775	Marine	Least concern
870			<i>Lutjanus johnii</i> Bloch, 1792	Marine, Mangrove, Coral reef	Least concern
871			<i>Lutjanus kasmira</i> Forsskål, 1775	Marine, Mangrove, Coral reef	Least concern
872			<i>Lutjanus lemniscatus</i> Valenciennes, 1828	Marine	Least concern
873			<i>Lutjanus lutjanus</i> Bloch, 1790	Marine, Mangrove, Coral reef	Least concern
874			<i>Lutjanus malabaricus</i> Bloch & Schneider, 1801	Marine, Mangrove, Coral reef	Least concern
875			<i>Lutjanus monostigma</i> Cuvier, 1828	Marine, Mangrove, Coral reef	Least concern
876			<i>Lutjanus quinquelineatus</i> Bloch, 1790	Marine, Mangrove, Coral reef	Least concern
877			<i>Lutjanus rivulatus</i> Cuvier, 1828	Marine	Least concern
878			<i>Lutjanus russellii</i> Bleeker, 1849	Marine, Mangrove, Coral reef	Least concern
879			<i>Lutjanus sebae</i> Cuvier, 1816	Marine, Mangrove, Coral reef	Least concern
880			<i>Lutjanus stellatus</i> Akazaki, 1983	Marine	Not evaluated
881			<i>Lutjanus timoriensis</i> Quoy & Gaimard, 1824	Marine, Mangrove, Coral reef	Least concern
882			<i>Lutjanus vitta</i> Quoy & Gaimard, 1824	Marine, Mangrove, Coral reef	Least concern
883			<i>Macolor niger</i> Forsskål, 1775	Marine, Mangrove, Coral reef	Least concern
884			<i>Pristipomoides typus</i> Bleeker, 1852	Marine	Least concern
885			<i>Pristipomoides filamentosus</i> Valenciennes, 1830	Marine	Least concern
886			<i>Symphorichthys spilurus</i> Günther, 1874	Marine	Least concern
887		Malacanthi- dae	<i>Branchiostegus albus</i> Dooley, 1978	Marine	Not evaluated
888			<i>Branchiostegus argentatus</i> Cuvier, 1830	Marine	Not evaluated

*Table continued on next page.....*

No	Orders	Families	Latin name	Habitats	IUCN
889			<i>Branchiostegus auratus</i> Kishinouye, 1907	Marine	Not evaluated
890			<i>Branchiostegus japonicus</i> Houttuyn, 1782	Marine, Mangrove, Coral reef	Least concern
891		Menidae	<i>Mene maculata</i> Bloch & Schneider, 1801	Marine, Mangrove, Coral reef	Not evaluated
892		Monodactylidae	<i>Monodactylus argenteus</i> Linnaeus, 1758	Marine, Mangrove, Coral reef	Least concern
893		Mullidae	<i>Mulloidichthys vanicolensis</i> Valenciennes, 1831	Marine, Mangrove, Coral reef	Least concern
894			<i>Parupeneus chrysopleuron</i> Temminck & Schlegel, 1843	Marine	Not evaluated
895			<i>Parupeneus ciliatus</i> Lacepède, 1802	Marine, Mangrove, Coral reef	Least concern
896			<i>Parupeneus cyclostomus</i> Lacepède, 1801	Marine	Least concern
897			<i>Parupeneus forsskali</i> Fourmanoir & Guézé, 1976	Marine, Mangrove, Coral reef	Least concern
898			<i>Parupeneus heptacanthus</i> Lacepède, 1802	Marine, Mangrove, Coral reef	Least concern
899			<i>Parupeneus indicus</i> Shaw, 1803	Marine, Mangrove, Coral reef	Least concern
900			<i>Parupeneus multifasciatus</i> Quoy & Gaimard, 1825	Marine, Mangrove, Coral reef	Least concern
901			<i>Parupeneus trifasciatus</i> Lacepède, 1801	Marine, Mangrove, Coral reef	Least concern
902			<i>Upeneus asymmetricus</i> Lachner, 1954	Marine, Mangrove, Coral reef	Not evaluated
903			<i>Upeneus francisi</i> Randall & Guézé, 1992	Marine	Least concern
904			<i>Upeneus guttatus</i> Day, 1868	Marine	Least concern
905			<i>Upeneus japonicus</i> Houttuyn, 1782	Marine, Mangrove, Coral reef	Not evaluated
906			<i>Upeneus luzonius</i> Jordan & Seale, 1907	Marine, Mangrove, Coral reef	Not evaluated
907			<i>Upeneus moluccensis</i> Bleeker, 1855	Marine, Mangrove, Coral reef	Least concern
908			<i>Upeneus subvittatus</i> Temminck & Schlegel, 1843	Marine, Mangrove, Coral reef	Not evaluated
909			<i>Upeneus sulphureus</i> Cuvier, 1829	Marine, Mangrove, Coral reef	Least concern
910			<i>Upeneus tragula</i> Richardson, 1846	Marine, Mangrove, Coral reef	Least concern
911		Nemipteridae	<i>Nemipterus aurora</i> Russell, 1993	Marine	Not evaluated
912			<i>Nemipterus bathybius</i> Snyder, 1911	Marine	Not evaluated
913			<i>Nemipterus furcosus</i> Valenciennes, 1830	Marine	Least concern
914			<i>Nemipterus hexodon</i> Quoy & Gaimard, 1824	Marine	Least concern
915			<i>Nemipterus japonicus</i> Bloch, 1791	Marine, Mangrove, Coral reef	Least concern
916			<i>Nemipterus marginatus</i> Valenciennes, 1830	Marine	Least concern

Table continued on next page.....

No	Orders	Families	Latin name	Habitats	IUCN
917			<i>Nemipterus nemurus</i> Bleeker, 1857	Marine	Least concern
918			<i>Nemipterus peronii</i> Valenciennes, 1830	Marine, Mangrove, Coral reef	Least concern
919			<i>Nemipterus thosaporni</i> Russell, 1991	Marine	Not evaluated
920			<i>Nemipterus virgatus</i> Houttuyn, 1782	Marine, Mangrove, Coral reef	Vulnerable
921			<i>Nemipterus zysron</i> Bleeker, 1856	Marine	Least concern
922			<i>Parascolopsis inermis</i> Temminck & Schlegel, 1843	Marine	Least concern
923			<i>Pentapodus emeryii</i> Richardson, 1843	Marine, Mangrove, Coral reef	Least concern
924			<i>Pentapodus setosus</i> Valenciennes, 1830	Marine, Mangrove, Coral reef	Not evaluated
925			<i>Pentapodus vitta</i> Quoy & Gaimard, 1824	Marine, Mangrove, Coral reef	Not evaluated
926			<i>Scolopsis affinis</i> Peters, 1877	Marine, Mangrove, Coral reef	Least concern
927			<i>Scolopsis bilineata</i> Bloch, 1793	Marine, Mangrove, Coral reef	Least concern
928			<i>Scolopsis bimaculata</i> Rüppell, 1828	Marine, Mangrove, Coral reef	Least concern
929			<i>Scolopsis ciliata</i> Lacepède, 1802	Marine, Mangrove, Coral reef	Least concern
930			<i>Scolopsis lineata</i> Quoy & Gaimard, 1824	Marine, Mangrove, Coral reef	Least concern
931			<i>Scolopsis monogramma</i> Cuvier, 1830	Marine, Mangrove, Coral reef	Least concern
932			<i>Scolopsis taenioptera</i> Cuvier, 1830	Marine, Mangrove, Coral reef	Least concern
933			<i>Scolopsis trilineata</i> Kner, 1868	Marine, Mangrove, Coral reef	Least concern
934			<i>Scolopsis vosmeri</i> Bloch, 1792	Marine, Mangrove, Coral reef	Least concern
935		Nomeidae	<i>Cubiceps whiteleggii</i> Waite, 1894	Marine	Not evaluated
936			<i>Ariomma indica</i> Day, 1871	Marine	Not evaluated
937		Opistognathidae	<i>Opistognathus macrolepis</i> Peters, 1866	Marine	Not evaluated
938		Oplegnathidae	<i>Oplegnathus punctatus</i> Temminck & Schlegel, 1844	Marine, Mangrove, Coral reef	Not evaluated
939		Pempheridae	<i>Pempheris analis</i> Waite, 1910	Marine, Mangrove, Coral reef	Not evaluated
940			<i>Pempheris molucca</i> Cuvier, 1829	Marine, Mangrove, Coral reef	Not evaluated
941			<i>Pempheris nyctereutes</i> Jordan & Evermann, 1902	Marine	Not evaluated
942			<i>Pempheris oualensis</i> Cuvier, 1831	Marine, Mangrove, Coral reef	Not evaluated
943			<i>Pempheris schwenkii</i> Bleeker, 1855	Marine, Mangrove, Coral reef	Not evaluated

Table continued on next page.....

No	Orders	Families	Latin name	Habitats	IUCN
944			<i>Pempheris vanicolensis</i> Cuvier, 1831	Marine, Mangrove, Coral reef	Not evaluated
945		Pentacerotidae	<i>Histiopertus typus</i> Temminck & Schlegel, 1844	Marine	Not evaluated
946		Pinguipedidae	<i>Parapercis alboguttata</i> Günther, 1872	Marine	Not evaluated
947			<i>Parapercis clathrata</i> Ogilby, 1910	Marine, Mangrove, Coral reef	Not evaluated
948			<i>Parapercis cylindrica</i> Bloch, 1792	Marine, Mangrove, Coral reef	Not evaluated
949			<i>Parapercis filamentosa</i> Steindachner, 1878	Marine	Not evaluated
950			<i>Parapercis hexophthalma</i> Cuvier, 1829	Marine, Mangrove, Coral reef	Not evaluated
951			<i>Parapercis lutevittata</i> Liao, Cheng & Shao, 2011	Marine	Not evaluated
952			<i>Parapercis millepunctata</i> Günther, 1860	Marine, Mangrove, Coral reef	Not evaluated
953			<i>Parapercis multiplicata</i> Randall, 1984	Marine, Mangrove, Coral reef	Not evaluated
954			<i>Parapercis nebulosa</i> Quoy & Gaimard, 1825	Marine, Mangrove, Coral reef	Not evaluated
955			<i>Parapercis ommatura</i> Jordan & Snyder, 1902	Marine, Mangrove, Coral reef	Not evaluated
956			<i>Parapercis pulchella</i> Temminck & Schlegel, 1843	Marine	Not evaluated
957			<i>Parapercis punctata</i> Cuvier, 1829	Marine	Not evaluated
958			<i>Parapercis sexfasciata</i> Temminck & Schlegel, 1843	Marine	Not evaluated
959			<i>Parapercis xanthozona</i> Bleeker, 1849	Marine, Mangrove, Coral reef	Least concern
960		Platacidae	<i>Platax orbicularis</i> Forsskål, 1775	Marine, Mangrove, Coral reef	Least concern
961			<i>Platax pinnatus</i> Linnaeus, 1758	Marine	Not evaluated
962			<i>Platax teira</i> Forsskål, 1775	Marine, Mangrove, Coral reef	Least concern
963		Plesiopidae	<i>Plesiops coeruleolineatus</i> Rüppell, 1835	Marine, Mangrove, Coral reef	Least concern
964			<i>Plesiops verecundus</i> Mooi, 1995	Marine, Mangrove, Coral reef	Not evaluated
965		Polynemidae	<i>Eleutheronema rhadinum</i> Jordan & Evermann, 1902	Marine	Not evaluated
966			<i>Eleutheronema tetradactylum</i> Shaw, 1804	Marine, Mangrove, Coral reef	Not evaluated
967			<i>Polydactylus sextarius</i> Bloch & Schneider, 1801	Marine, Mangrove, Coral reef	Not evaluated
968		Pomacanthidae	<i>Apolemichthys trimaculatus</i> Cuvier, 1831	Marine, Mangrove, Coral reef	Least concern
969			<i>Centropyge bicolor</i> Bloch, 1787	Marine, Mangrove, Coral reef	Least concern
970			<i>Centropyge bispinosa</i> Günther, 1860	Marine, Mangrove, Coral reef	Least concern

Table continued on next page.....

No	Orders	Families	Latin name	Habitats	IUCN
971			<i>Centropyge loriculus</i> Günther, 1874	Marine, Mangrove, Coral reef	Least concern
972			<i>Centropyge tibicen</i> Cuvier, 1831	Marine, Mangrove, Coral reef	Least concern
973			<i>Centropyge vrolikii</i> Bleeker, 1853	Marine, Mangrove, Coral reef	Least concern
974			<i>Chaetodontoplus septentrionalis</i> Temminck & Schlegel, 1844	Marine, Mangrove, Coral reef	Least concern
975			<i>Pomacanthus imperator</i> Bloch, 1787	Marine, Mangrove, Coral reef	Least concern
976			<i>Pomacanthus navarchus</i> Cuvier, 1831	Marine, Mangrove, Coral reef	Least concern
977			<i>Pomacanthus semicirculatus</i> Cuvier, 1831	Marine, Mangrove, Coral reef	Least concern
978			<i>Pomacanthus sexstriatus</i> Cuvier, 1831	Marine, Mangrove, Coral reef	Least concern
979			<i>Pomacanthus xanthometopon</i> Bleeker, 1853	Marine, Mangrove, Coral reef	Least concern
980		Pomacentridae	<i>Abudefduf bengalensis</i> Bloch, 1787	Marine, Mangrove, Coral reef	Least concern
981			<i>Abudefduf notatus</i> Day, 1870	Marine, Mangrove, Coral reef	Least concern
982			<i>Abudefduf septemfasciatus</i> Cuvier, 1830	Marine, Mangrove, Coral reef	Least concern
983			<i>Abudefduf sexfasciatus</i> Lacepède, 1801	Marine, Mangrove, Coral reef	Least concern
984			<i>Abudefduf sordidus</i> Forsskål, 1775	Marine, Mangrove, Coral reef	Least concern
985			<i>Abudefduf vaigiensis</i> Quoy & Gaimard, 1825	Marine, Mangrove, Coral reef	Least concern
986			<i>Amblyglyphidodon curacao</i> Bloch, 1787	Marine, Mangrove, Coral reef	Least concern
987			<i>Amphiprion akindynos</i> Allen, 1972	Marine, Mangrove, Coral reef	Least concern
988			<i>Amphiprion bicinctus</i> Rüppell, 1830	Marine, Mangrove, Coral reef	Least concern
989			<i>Amphiprion clarkii</i> Bennett, 1830	Marine, Mangrove, Coral reef	Not evaluated
990			<i>Amphiprion frenatus</i> Brevoort, 1856	Marine, Mangrove, Coral reef	Least concern
991			<i>Amphiprion ocellaris</i> Cuvier, 1830	Marine, Mangrove, Coral reef	Not evaluated
992			<i>Amphiprion polymnus</i> Linnaeus, 1758	Marine, Mangrove, Coral reef	Least concern
993			<i>Amphiprion tricinctus</i> Schultz & Welander, 1953	Marine, Mangrove, Coral reef	Least concern
994		<i>Chromis atripectoralis</i> Welander & Schultz, 1951	Marine, Mangrove, Coral reef	Not evaluated	

*Table continued on next page.....*



No	Orders	Families	Latin name	Habitats	IUCN
995			<i>Chromis atripes</i> Fowler & Bean, 1928	Marine, Mangrove, Coral reef	Least concern
996			<i>Chromis caudalis</i> Randall, 1988	Marine, Mangrove, Coral reef	Least concern
997			<i>Chromis cinerascens</i> Cuvier, 1830	Marine, Mangrove, Coral reef	Least concern
998			<i>Chromis fumea</i> Tanaka, 1917	Marine, Mangrove, Coral reef	Least concern
999			<i>Chromis iomelas</i> Jordan & Seale, 1906	Marine, Mangrove, Coral reef	Not evaluated
1000			<i>Chromis lepidolepis</i> Bleeker, 1877	Marine, Mangrove, Coral reef	Not evaluated
1001			<i>Chromis margaritifer</i> Fowler, 1946	Marine, Mangrove, Coral reef	Not evaluated
1002			<i>Chromis notata</i> Temminck & Schlegel, 1843	Marine, Mangrove, Coral reef	Not evaluated
1003			<i>Chromis ternatensis</i> Bleeker, 1856	Marine, Mangrove, Coral reef	Not evaluated
1004			<i>Chromis viridis</i> Cuvier, 1830	Marine, Mangrove, Coral reef	Not evaluated
1005			<i>Chromis weberi</i> Fowler & Bean, 1928	Marine, Mangrove, Coral reef	Not evaluated
1006			<i>Chromis xanthura</i> Bleeker, 1854	Marine, Mangrove, Coral reef	Not evaluated
1007			<i>Chrysiptera cyanea</i> Quoy & Gaimard, 1825	Marine, Mangrove, Coral reef	Not evaluated
1008			<i>Chrysiptera flavipinnis</i> Allen & Robertson, 1974	Marine, Mangrove, Coral reef	Least concern
1009			<i>Chrysiptera parasema</i> Fowler, 1918	Marine, Mangrove, Coral reef	Not evaluated
1010			<i>Chrysiptera traceyi</i> Woods & Schultz, 1960	Marine, Mangrove, Coral reef	Not evaluated
1011			<i>Dascyllus aruanus</i> Linnaeus, 1758	Marine, Mangrove, Coral reef	Not evaluated
1012			<i>Dascyllus marginatus</i> Rüppell, 1829	Marine, Mangrove, Coral reef	Not evaluated
1013			<i>Dascyllus melanurus</i> Bleeker, 1854	Marine, Mangrove, Coral reef	Not evaluated
1014			<i>Dascyllus reticulatus</i> Richardson, 1846	Marine, Mangrove, Coral reef	Not evaluated
1015			<i>Dascyllus trimaculatus</i> Rüppell, 1829	Marine, Mangrove, Coral reef	Not evaluated
1016			<i>Dischistodus chrysopoecilus</i> Schlegel & Müller, 1839	Marine, Mangrove, Coral reef	Not evaluated
1017			<i>Dischistodus fasciatus</i> Cuvier, 1830	Marine, Mangrove, Coral reef	Not evaluated
1018			<i>Dischistodus melanotus</i> Bleeker, 1858	Marine, Mangrove, Coral reef	Not evaluated

Table continued on next page.....

No	Orders	Families	Latin name	Habitats	IUCN
1019			<i>Dischistodus prosopotaenia</i> Bleeker, 1852	Marine, Mangrove, Coral reef	Not evaluated
1020			<i>Hemiglyphidodon plagiometopon</i> Bleeker, 1852	Marine, Mangrove, Coral reef	Not evaluated
1021			<i>Neoglyphidodon melas</i> Cuvier, 1830	Marine, Mangrove, Coral reef	Not evaluated
1022			<i>Neoglyphidodon nigroris</i> Cuvier, 1830	Marine, Mangrove, Coral reef	Not evaluated
1023			<i>Neopomacentrus azysron</i> Bleeker, 1877	Marine, Mangrove, Coral reef	Not evaluated
1024			<i>Neopomacentrus bankieri</i> Richardson, 1846	Marine, Mangrove, Coral reef	Least concern
1025			<i>Neopomacentrus cyanomos</i> Bleeker, 1856	Marine, Mangrove, Coral reef	Not evaluated
1026			<i>Neopomacentrus filamentosus</i> Macleay, 1882	Marine, Mangrove, Coral reef	Not evaluated
1027			<i>Neopomacentrus taeniurus</i> Bleeker, 1856	Marine, Mangrove, Coral reef	Data deficient
1028			<i>Parma oligolepis</i> Whitley, 1929	Marine, Mangrove, Coral reef	Not evaluated
1029			<i>Plectroglyphidodon dickii</i> Liénard, 1839	Marine, Mangrove, Coral reef	Not evaluated
1030			<i>Plectroglyphidodon lacrymatus</i> Quoy & Gaimard, 1825	Marine, Mangrove, Coral reef	Not evaluated
1031			<i>Acanthochromis polyacanthus</i> Bleeker, 1855	Marine, Mangrove, Coral reef	Least concern
1032			<i>Pomacanthus annularis</i> Bloch, 1787	Marine, Mangrove, Coral reef	Least concern
1033			<i>Pomacentrus amboinensis</i> Bleeker, 1868	Marine, Mangrove, Coral reef	Not evaluated
1034			<i>Pomacentrus bankanensis</i> Bleeker, 1854	Marine, Mangrove, Coral reef	Not evaluated
1035			<i>Pomacentrus chrysurus</i> Cuvier, 1830	Marine, Mangrove, Coral reef	Not evaluated
1036			<i>Pomacentrus coelestis</i> Jordan & Starks, 1901	Marine, Mangrove, Coral reef	Not evaluated
1037			<i>Pomacentrus moluccensis</i> Bleeker, 1853	Marine, Mangrove, Coral reef	Not evaluated
1038			<i>Pomacentrus pavo</i> Bloch, 1787	Marine, Mangrove, Coral reef	Not evaluated
1039			<i>Pomacentrus simsiang</i> Bleeker, 1856	Marine, Mangrove, Coral reef	Not evaluated
1040			<i>Pomacentrus tripunctatus</i> Cuvier, 1830	Marine, Mangrove, Coral reef	Not evaluated
1041			<i>Pomacentrus wardi</i> Whitley, 1927	Marine, Mangrove, Coral reef	Least concern
1042			<i>Pomachromis richardsoni</i> Snyder, 1909	Marine, Mangrove, Coral reef	Not evaluated

*Table continued on next page.....*

No	Orders	Families	Latin name	Habitats	IUCN
1043			<i>Pristotis obtusirostris</i> Günther, 1862	Marine, Mangrove, Coral reef	Not evaluated
1044			<i>Stegastes albifasciatus</i> Schlegel & Müller, 1839	Marine, Mangrove, Coral reef	Not evaluated
1045			<i>Stegastes altus</i> Okada & Ikeda, 1937	Marine, Mangrove, Coral reef	Not evaluated
1046			<i>Stegastes fasciolatus</i> Ogilby, 1889	Marine, Mangrove, Coral reef	Not evaluated
1047			<i>Stegastes nigricans</i> Lacepède, 1802	Marine, Mangrove, Coral reef	Not evaluated
1048			<i>Stegastes obreptus</i> Whitley, 1948	Marine, Mangrove, Coral reef	Not evaluated
1049			<i>Teixeirichthys jordani</i> Rutter, 1897	Marine, Mangrove, Coral reef	Least concern
1050		Priacanthidae	<i>Cookeolus japonicus</i> Cuvier, 1829	Marine	Least concern
1051			<i>Heteropriacanthus cruentatus</i> Lacepède, 1801	Marine	Least concern
1052			<i>Priacanthus blochii</i> Bleeker, 1853	Marine	Least concern
1053			<i>Priacanthus hamrur</i> Forsskål, 1775	Marine, Mangrove, Coral reef	Least concern
1054			<i>Priacanthus macracanthus</i> Cuvier, 1829	Marine, Mangrove, Coral reef	Least concern
1055			<i>Priacanthus sagittarius</i> Starnes, 1988	Marine	Least concern
1056			<i>Priacanthus tayenus</i> Richardson, 1846	Marine, Mangrove, Coral reef	Least concern
1057			<i>Pristigenys niponia</i> Cuvier, 1829	Marine	Least concern
1058		Pseudochromidae	<i>Labracinus cyclophthalmus</i> Müller & Troschel, 1849	Marine, Mangrove, Coral reef	Not evaluated
1059			<i>Pseudochromis cyanotaenia</i> Bleeker, 1857	Marine, Mangrove, Coral reef	Least concern
1060			<i>Pseudochromis fuscus</i> Müller & Troschel, 1849	Marine, Mangrove, Coral reef	Least concern
1061		Ptereleotridae	<i>Parioglossus dotui</i> Tomiyama, 1958	Marine, Mangrove, Coral reef	Not evaluated
1062		Ptereleotridae	<i>Nemateleotris decora</i> Randall & Allen, 1973	Marine	Least concern
1063			<i>Nemateleotris magnifica</i> Fowler, 1938	Marine, Mangrove, Coral reef	Least concern
1064			<i>Ptereleotris evides</i> Jordan & Hubbs, 1925	Marine, Mangrove, Coral reef	Least concern
1065			<i>Ptereleotris hanae</i> Jordan & Snyder, 1901	Marine, Mangrove, Coral reef	Least concern
1066		Rachycentridae	<i>Rachycentron canadum</i> Linnaeus, 1766	Marine, Mangrove, Coral reef	Least concern
1067		Scaridae	<i>Cetoscarus bicolor</i> Rüppell, 1829	Marine, Mangrove, Coral reef	Least concern
1068			<i>Chlorurus bleekeri</i> de Beaufort, 1940	Marine, Mangrove, Coral reef	Least concern
1069			<i>Chlorurus bowersi</i> Snyder, 1909	Marine, Mangrove, Coral reef	Near threatened

Table continued on next page.....

No	Orders	Families	Latin name	Habitats	IUCN
1070			<i>Chlorurus sordidus</i> Forsskål, 1775	Marine, Mangrove, Coral reef	Least concern
1071			<i>Hipposcarus longiceps</i> Valenciennes, 1840	Marine, Mangrove, Coral reef	Least concern
1072			<i>Chlorurus microrhinos</i> Bleeker, 1854	Marine, Mangrove, Coral reef	Least concern
1073			<i>Scarus dimidiatus</i> Bleeker, 1859	Marine, Mangrove, Coral reef	Least concern
1074			<i>Scarus dubius</i> Bennett, 1828	Marine, Mangrove, Coral reef	Least concern
1075			<i>Scarus flavipectoralis</i> Schultz, 1958	Marine, Mangrove, Coral reef	Least concern
1076			<i>Scarus forsteni</i> Bleeker, 1861	Marine, Mangrove, Coral reef	Least concern
1077			<i>Scarus ghobban</i> Forsskål, 1775	Marine, Mangrove, Coral reef	Least concern
1078			<i>Scarus globiceps</i> Valenciennes, 1840	Marine, Mangrove, Coral reef	Least concern
1079			<i>Scarus oviceps</i> Valenciennes, 1840	Marine, Mangrove, Coral reef	Least concern
1080			<i>Scarus ovifrons</i> Temminck & Schlegel, 1846	Marine, Mangrove, Coral reef	Data deficient
1081			<i>Scarus rivulatus</i> Valenciennes, 1840	Marine, Mangrove, Coral reef	Least concern
1082			<i>Scarus schlegeli</i> Bleeker, 1861	Marine, Mangrove, Coral reef	Least concern
1083			<i>Scarus spinus</i> Kner, 1868	Marine, Mangrove, Coral reef	Least concern
1084		Scatophagi- dae	<i>Scatophagus argus</i> Linnaeus, 1766*	Marine, Mangrove, Coral reef	Least concern
1085		Schindlerii- dae	<i>Schindleria praematura</i> Schindler, 1930	Marine	Least concern
1086		Sciaenidae	<i>Argyrosomus japonicus</i> Temminck & Schlegel, 1843	Marine	Endangered
1087			<i>Atrobucca nibe</i> Jordan & Thompson, 1911	Marine	Least concern
1088			<i>Bahaba taipingensis</i> Herre, 1932	Marine	Critically endangered
1089			<i>Boesemania microlepis</i> Bleeker, 1858	Marine	Data deficient
1090			<i>Chrysochir aureus</i> Richardson, 1846	Marine	Least concern
1091			<i>Collichthys lucidus</i> Richardson, 1844	Marine, Mangrove, Coral reef	Least concern
1092			<i>Dendrophysa russelii</i> Cuvier, 1829	Marine, Mangrove, Coral reef	Least concern
1093			<i>Johnius amblycephalus</i> Bleeker, 1855	Marine	Least concern
1094			<i>Johnius belangerii</i> Cuvier, 1830	Marine, Mangrove, Coral reef, Intertidal	Least concern
1095			<i>Johnius borneensis</i> Bleeker, 1851	Marine	Least concern
1096			<i>Johnius carouna</i> Cuvier, 1830	Marine	Least concern
1097			<i>Johnius distinctus</i> Tanaka, 1916	Marine	Least concern

Table continued on next page.....

No	Orders	Families	Latin name	Habitats	IUCN
1098			<i>Johnius dussumieri</i> Cuvier, 1830	Marine, Mangrove, Coral reef	Least concern
1099			<i>Johnius fasciatus</i> Chu, Lo & Wu, 1963	Marine	Not evaluated
1100			<i>Johnius grypotus</i> Richardson, 1846	Marine	Least concern
1101			<i>Johnius trewavasae</i> Sasaki, 1992	Marine	Least concern
1102			<i>Larimichthys crocea</i> Richardson, 1846*	Marine, Mangrove, Coral reef	Critically endangered
1103			<i>Larimichthys polyactis</i> Bleeker, 1877	Marine, Mangrove, Coral reef	Least concern
1104			<i>Macropsinosa cuja</i> Hamilton, 1822	Marine	Data deficient
1105			<i>Miichthys miuy</i> Basilewsky, 1855*	Marine	Data deficient
1106			<i>Nibea albiflora</i> Richardson, 1846*	Marine, Mangrove, Coral reef	Least concern
1107			<i>Nibea chui</i> Trewavas, 1971	Marine, Mangrove, Coral reef	Data deficient
1108			<i>Nibea semifasciata</i> Chu, Lo & Wu, 1963	Marine, Mangrove, Coral reef	Data deficient
1109			<i>Nibea soldado</i> Lacepède, 1802	Marine	Least concern
1110			<i>Otolithes ruber</i> Bloch & Schneider, 1801	Marine, Mangrove, Coral reef, Intertidal	Least concern
1111			<i>Pennahia anea</i> Bloch, 1793	Marine, Mangrove, Coral reef	Least concern
1112			<i>Pennahia argentata</i> Houttuyn, 1782	Marine, Mangrove, Coral reef	Least concern
1113			<i>Pennahia macrocephalus</i> Tang, 1937	Marine, Intertidal	Least concern
1114			<i>Pennahia pawak</i> Lin, 1940	Marine	Least concern
1115			<i>Protonibea diacanthus</i> Lacepède, 1802	Marine, Mangrove, Coral reef	Near threatened
1116			<i>Sciaenops ocellatus</i> Linnaeus, 1766	Marine, Mangrove, Coral reef	Least concern
1117		Scomberidae	<i>Acanthocybium solandri</i> Cuvier, 1832	Marine	Least concern
1118			<i>Auxis rochei</i> Risso, 1810	Marine	Least concern
1119			<i>Auxis thazard</i> Lacepède, 1800	Marine	Least concern
1120			<i>Euthynnus affinis</i> Cantor, 1849	Marine	Least concern
1121			<i>Katsuwonus pelamis</i> Linnaeus, 1758	Marine	Least concern
1122			<i>Rastrelliger kanagurta</i> Cuvier, 1816	Marine, Mangrove, Coral reef	Data deficient
1123			<i>Scomber australasicus</i> Cuvier, 1832	Marine	Least concern
1124			<i>Scomber japonicus</i> Houttuyn, 1782*	Marine	Least concern
1125			<i>Scomberomorus commerson</i> Lacepède, 1800	Marine, Mangrove, Coral reef	Near threatened
1126			<i>Scomberomorus guttatus</i> Bloch & Schneider, 1801	Marine	Data deficient
1127			<i>Scomberomorus niphonius</i> Cuvier, 1832	Marine, Mangrove, Coral reef	Data deficient
1128			<i>Thunnus obesus</i> Lowe, 1839	Marine	Vulnerable
1129			<i>Thunnus tonggol</i> Bleeker, 1851	Marine	Data deficient

Table continued on next page.....

No	Orders	Families	Latin name	Habitats	IUCN
1130		Serranidae	<i>Aethaloperca rogae</i> Forsskål, 1775	Marine	Least concern
1131			<i>Anyperodon leucogrammicus</i> Valenciennes, 1828	Marine, Mangrove, Coral reef	Least concern
1132			<i>Cephalopholis argus</i> Schneider, 1801	Marine, Mangrove, Coral reef	Least concern
1133			<i>Cephalopholis aurantia</i> Valenciennes, 1828	Marine	Least concern
1134			<i>Cephalopholis boenak</i> Bloch, 1790	Marine, Mangrove, Coral reef	Least concern
1135			<i>Cephalopholis formosa</i> Shaw, 1812	Marine, Mangrove, Coral reef	Least concern
1136			<i>Cephalopholis leopardus</i> Lacepède, 1801	Marine, Mangrove, Coral reef	Least concern
1137			<i>Cephalopholis microprion</i> Bleeker, 1852	Marine, Mangrove, Coral reef	Least concern
1138			<i>Cephalopholis miniata</i> Forsskål, 1775	Marine, Mangrove, Coral reef	Least concern
1139			<i>Cephalopholis urodeta</i> Forster, 1801	Marine, Mangrove, Coral reef	Least concern
1140			<i>Chelidoperca hirundinacea</i> Valenciennes, 1831	Marine	Not evaluated
1141			<i>Cromileptes altivelis</i> Valenciennes, 1828	Marine, Mangrove, Coral reef	Data deficient
1142			<i>Diploprion bifasciatum</i> Cuvier, 1828	Marine, Mangrove, Coral reef	Least concern
1143			<i>Epinephelus akaara</i> Temminck & Schlegel, 1842	Marine, Mangrove, Coral reef	Endangered
1144			<i>Epinephelus amblycephalus</i> Bleeker, 1857	Marine, Mangrove, Coral reef	Least concern
1145			<i>Epinephelus areolatus</i> Forsskål, 1775	Marine, Mangrove, Coral reef	Least concern
1146			<i>Epinephelus awoara</i> Temminck & Schlegel, 1842	Marine, Mangrove, Coral reef	Data deficient
1147			<i>Epinephelus bleekeri</i> Vaillant, 1878	Marine, Mangrove, Coral reef	Data deficient
1148			<i>Epinephelus bruneus</i> Bloch, 1793	Marine, Mangrove, Coral reef	Vulnerable
1149			<i>Epinephelus chlorostigma</i> Valenciennes, 1828	Marine, Mangrove, Coral reef	Least concern
1150			<i>Epinephelus coeruleopunctatus</i> Bloch, 1790	Marine, Mangrove, Coral reef	Least concern
1151			<i>Epinephelus coioides</i> Hamilton, 1822	Marine, Mangrove, Coral reef, Intertidal	Least concern
1152			<i>Epinephelus corallicola</i> Valenciennes, 1828	Marine, Mangrove, Coral reef	Least concern
1153			<i>Epinephelus diacanthus</i> Valenciennes, 1828	Marine	Least concern
1154			<i>Epinephelus epistictus</i> Temminck & Schlegel, 1842	Marine	Least concern
1155			<i>Epinephelus fasciatomaculosus</i> Peters, 1865	Marine, Mangrove, Coral reef	Least concern

*Table continued on next page.....*

No	Orders	Families	Latin name	Habitats	IUCN
1156			<i>Epinephelus fasciatus</i> Forsskål, 1775	Marine, Mangrove, Coral reef	Least concern
1157			<i>Epinephelus fuscoguttatus</i> Forsskål, 1775	Marine	Vulnerable
1158			<i>Epinephelus lanceolatus</i> Bloch, 1790	Marine, Mangrove, Coral reef	Data deficient
1159			<i>Epinephelus latifasciatus</i> Temminck & Schlegel, 1842	Marine	Least concern
1160			<i>Epinephelus longispinis</i> Kner, 1864	Marine, Mangrove, Coral reef	Least concern
1161			<i>Epinephelus macrospilos</i> Bleeker, 1855	Marine, Mangrove, Coral reef	Least concern
1162			<i>Epinephelus maculatus</i> Bloch, 1790	Marine, Mangrove, Coral reef	Least concern
1163			<i>Epinephelus malabaricus</i> Bloch & Schneider, 1801	Marine, Mangrove, Coral reef	Least concern
1164			<i>Epinephelus ongus</i> Bloch, 1790	Marine, Mangrove, Coral reef	Least concern
1165			<i>Epinephelus polyphkadion</i> Bleeker, 1849	Marine	Vulnerable
1166			<i>Epinephelus quoyanus</i> Valenciennes, 1830	Marine, Mangrove, Coral reef	Least concern
1167			<i>Epinephelus rivulatus</i> Valenciennes, 1830	Marine, Mangrove, Coral reef	Least concern
1168			<i>Epinephelus sexfasciatus</i> Valenciennes, 1828	Marine, Mangrove, Coral reef	Least concern
1169			<i>Epinephelus spilotoceps</i> Schultz, 1953	Marine, Mangrove, Coral reef	Least concern
1170			<i>Epinephelus stictus</i> Randall & Allen, 1987	Marine, Mangrove, Coral reef	Least concern
1171			<i>Epinephelus tauvina</i> Forsskål, 1775	Marine, Mangrove, Coral reef	Data deficient
1172			<i>Epinephelus trimaculatus</i> Valenciennes, 1828	Marine	Least concern
1173			<i>Nippon spinosus</i> Cuvier, 1828	Marine	Not evaluated
1174			<i>Plectranthias japonicus</i> Steindachner, 1883	Marine	Not evaluated
1175			<i>Plectropomus areolatus</i> Rüppell, 1830	Marine	Vulnerable
1176			<i>Plectropomus laevis</i> Lacepède, 1801	Marine, Mangrove, Coral reef	Least concern
1177			<i>Plectropomus leopardus</i> Lacepède, 1802	Marine, Mangrove, Coral reef	Least concern
1178			<i>Plectropomus maculatus</i> Bloch, 1790	Marine	Least concern
1179			<i>Pseudanthias cichlops</i> Bleeker, 1853	Marine	Least concern
1180			<i>Pseudanthias tuka</i> Herre & Montalban, 1927	Marine	Least concern
1181			<i>Tosana niwae</i> Smith & Pope, 1906	Marine	Not evaluated
1182			<i>Triso dermopterus</i> Temminck & Schlegel, 1842	Marine	Least concern
1183		Siganidae	<i>Siganus argenteus</i> Quoy & Gaimard, 1825	Marine, Mangrove, Coral reef	Least concern
1184			<i>Siganus canaliculatus</i> Park, 1797*	Marine, Mangrove, Coral reef	Least concern

Table continued on next page.....

No	Orders	Families	Latin name	Habitats	IUCN
1185			<i>Siganus corallinus</i> Valenciennes, 1835	Marine	Least concern
1186			<i>Siganus fuscescens</i> Houttuyn, 1782	Marine, Mangrove, Coral reef, Intertidal	Least concern
1187			<i>Siganus guttatus</i> Bloch, 1787	Marine, Mangrove, Coral reef	Least concern
1188			<i>Siganus javus</i> Linnaeus, 1766	Marine	Least concern
1189			<i>Siganus puellus</i> Schlegel, 1852	Marine	Least concern
1190			<i>Siganus punctatus</i> Schneider & Forster, 1801	Marine, Mangrove, Coral reef	Least concern
1191			<i>Siganus spinus</i> Linnaeus, 1758	Marine, Mangrove, Coral reef	Least concern
1192			<i>Siganus unimaculatus</i> Evermann & Seale, 1907	Marine	Data deficient
1193			<i>Siganus virgatus</i> Valenciennes, 1835	Marine, Mangrove, Coral reef	Least concern
1194			<i>Siganus vulpinus</i> Schlegel & Müller, 1845	Marine	Least concern
1195		Sillaginidae	<i>Sillago aeolus</i> Jordan & Evermann, 1902	Marine	Not evaluated
1196			<i>Sillago asiatica</i> McKay, 1982	Marine	Not evaluated
1197			<i>Sillago indica</i> McKay, Dutt & Sujatha, 1985	Marine	Data deficient
1198			<i>Sillago japonica</i> Temminck & Schlegel, 1843	Marine, Mangrove, Coral reef, Intertidal	Least concern
1199			<i>Sillago maculata</i> Quoy & Gaimard, 1824	Marine, Mangrove, Coral reef, Intertidal	Not evaluated
1200			<i>Sillago parvisquamis</i> Gill, 1861	Marine	Endangered
1201			<i>Sillago sihama</i> Forsskål, 1775	Marine, Mangrove, Coral reef, Intertidal	Least concern
1202		Sparidae	<i>Acanthopagrus berda</i> Forsskål, 1775	Marine, Mangrove, Coral reef	Least concern
1203			<i>Acanthopagrus chinshira</i> Kume & Yoshino, 2008	Marine, Mangrove, Coral reef	Near threatened
1204			<i>Acanthopagrus latus</i> Houttuyn, 1782	Marine, Mangrove, Coral reef	Data deficient
1205			<i>Acanthopagrus pacificus</i> Iwatsuki, Kume & Yoshino, 2010	Marine	Least concern
1206			<i>Acanthopagrus schlegelii</i> Bleeker, 1854	Marine, Mangrove, Coral reef	Least concern
1207			<i>Argyrops bleekeri</i> Oshima, 1927	Marine	Least concern
1208			<i>Argyrops spinifer</i> Forsskål, 1775	Marine	Least concern
1209			<i>Caristius macropus</i> Bellotti, 1903	Marine, Mangrove, Coral reef	Not evaluated
1210			<i>Dentex hypselosomus</i> Bleeker, 1854	Marine	Least concern
1211			<i>Dentex tumifrons</i> Temminck & Schlegel, 1843	Marine, Mangrove, Coral reef	Least concern
1212			<i>Evynnis cardinalis</i> Lacepède, 1802	Marine, Mangrove, Coral reef	Endangered
1213			<i>Pagrus auratus</i> Forster, 1801	Marine, Mangrove, Coral reef	Least concern
1214			<i>Pagrus caeruleostictus</i> Valenciennes, 1830	Marine	Least concern

*Table continued on next page.....*



No	Orders	Families	Latin name	Habitats	IUCN
1215			<i>Pagrus major</i> Temminck & Schlegel, 1843	Marine, Mangrove, Coral reef	Least concern
1216			<i>Rhabdosargus sarba</i> Forsskål, 1775	Marine, Mangrove, Coral reef	Least concern
1217			<i>Sparus aurata</i> Linnaeus, 1758	Marine, Mangrove, Coral reef	Least concern
1218		Sphyraenidae	<i>Sphyraena barracuda</i> Edwards, 1771	Marine, Mangrove, Coral reef	Least concern
1219			<i>Sphyraena flavicauda</i> Rüppell, 1838	Marine	Not evaluated
1220			<i>Sphyraena forsteri</i> Cuvier, 1829	Marine, Mangrove, Coral reef	Not evaluated
1221			<i>Sphyraena japonica</i> Bloch & Schneider, 1801	Marine	Not evaluated
1222			<i>Sphyraena jello</i> Cuvier, 1829	Marine, Mangrove, Coral reef	Not evaluated
1223			<i>Sphyraena obtusata</i> Cuvier, 1829	Marine	Not evaluated
1224			<i>Sphyraena pinguis</i> Günther, 1874	Marine, Mangrove, Coral reef	Not evaluated
1225			<i>Sphyraena putnamae</i> Jordan & Seale, 1905	Marine	Not evaluated
1226		Stromateidae	<i>Pampus argenteus</i> Euphrasen, 1788	Marine, Mangrove, Coral reef	Not evaluated
1227			<i>Pampus chinensis</i> Euphrasen, 1788	Marine, Mangrove, Coral reef	Not evaluated
1228			<i>Pampus cinereus</i> Bloch, 1795	Marine	Not evaluated
1229			<i>Pampus minor</i> Liu & Li, 1998	Marine	Not evaluated
1230		Taenioididae	<i>Taenioides anguillaris</i> Linnaeus, 1758	Marine, Mangrove, Coral reef	Least concern
1231			<i>Taenioides cirratus</i> Blyth, 1860	Marine, Mangrove, Coral reef	Data deficient
1232			<i>Taenioides eruptionis</i> Bleeker, 1849	Marine, Mangrove, Coral reef	Not evaluated
1233		Terapontidae	<i>Helotes sexlineatus</i> Quoy & Gaimard, 1825	Marine, Mangrove, Coral reef	Least concern
1234			<i>Pelates quadrilineatus</i> Bloch, 1790	Marine, Mangrove, Coral reef	Not evaluated
1235			<i>Rhynchopelates oxyrhynchus</i> Temminck & Schlegel, 1842	Marine, Mangrove, Coral reef	Not evaluated
1236			<i>Terapon jarbua</i> Forsskål, 1775	Marine, Mangrove, Coral reef, Intertidal	Least concern
1237			<i>Terapon theraps</i> Cuvier, 1829	Marine, Mangrove, Coral reef	Least concern
1238		Thunnidae	<i>Sarda orientalis</i> Temminck & Schlegel, 1844	Marine, Mangrove, Coral reef	Least concern
1239		Trichiuridae	<i>Eupleurogrammus muticus</i> Gray, 1831	Marine, Mangrove, Coral reef	Not evaluated
1240			<i>Lepturacanthus savala</i> Cuvier, 1829	Marine, Mangrove, Coral reef	Not evaluated
1241			<i>Tentoriceps cristatus</i> Klunzinger, 1884	Marine	Not evaluated

Table continued on next page.....

No	Orders	Families	Latin name	Habitats	IUCN
1242			<i>Trichiurus brevis</i> Wang & You, 1992	Marine	Not evaluated
1243			<i>Trichiurus lepturus</i> Linnaeus, 1758*	Marine, Mangrove, Coral reef	Least concern
1244			<i>Trichiurus margarites</i> Li, 1992	Marine	Not evaluated
1245			<i>Trichiurus nanhaiensis</i> Wang & Xu, 1992	Marine	Not evaluated
1246		Trichonotidae	<i>Trichonotus filamentosus</i> Steindachner, 1867	Marine	Least concern
1247		Tripterygiidae	<i>Enneapterygius etheostoma</i> Jordan & Snyder, 1902	Marine, Intertidal	Least concern
1248			<i>Enneapterygius rubicauda</i> Shen, 1994	Marine, Intertidal	Least concern
1249			<i>Helcogramma gymnauchen</i> Weber, 1909	Marine, Mangrove, Coral reef	Least concern
1250			<i>Helcogramma striata</i> Hansen, 1986	Marine, Mangrove, Coral reef	Least concern
1251			<i>Helcogramma vulcana</i> Randall & Clark, 1993	Marine, Mangrove, Coral reef	Least concern
1252		Uranoscopidae	<i>Ichthyoscopus lebeck</i> Bloch & Schneider, 1801	Marine	Not evaluated
1253			<i>Uranoscopus bicinctus</i> Temminck & Schlegel, 1843	Marine	Not evaluated
1254			<i>Uranoscopus japonicus</i> Houttuyn, 1782	Marine	Least concern
1255			<i>Uranoscopus oligolepis</i> Bleeker, 1878	Marine	Least concern
1256			<i>Uranoscopus tosae</i> Jordan & Hubbs, 1925	Marine	Not evaluated
1257			<i>Xenocephalus elongatus</i> Temminck & Schlegel, 1843	Marine	Not evaluated
1258		Zanclidae	<i>Zanclus cornutus</i> Linnaeus, 1758	Marine, Mangrove, Coral reef	Least concern
1259	Pleuronectiformes	Achiridae	<i>Achirus lineatus</i> Linnaeus, 1758	Marine	Least concern
1260		Bothidae	<i>Arnoglossus japonicus</i> Hubbs, 1915	Marine, Mangrove, Coral reef	Least concern
1261			<i>Arnoglossus tapeinosoma</i> Bleeker, 1865	Marine	Data deficient
1262			<i>Arnoglossus tenuis</i> Günther, 1880	Marine, Mangrove, Coral reef	Least concern
1263			<i>Crossorhombus azureus</i> Alcock, 1889	Marine	Least concern
1264			<i>Engyprosopon grandisquama</i> Temminck & Schlegel, 1846	Marine	Least concern
1265			<i>Laeops kitaharae</i> Smith & Pope, 1906	Marine	Least concern
1266			<i>Laeops parviceps</i> Günther, 1880	Marine, Mangrove, Coral reef	Not evaluated
1267			<i>Psettina filimana</i> Li & Wang, 1982	Marine	Data deficient
1268			<i>Psettina hainanensis</i> Wu & Tang, 1935	Marine	Data deficient
1269			<i>Psettina ijimae</i> Jordan & Starks, 1904	Marine	Least concern
1270			<i>Tephrinectes sinensis</i> Lacepède, 1802	Marine, Mangrove, Coral reef	Least concern
1271		Citharidae	<i>Brachypleura novaezeelandiae</i> Günther, 1862	Marine	Least concern
1272		Cynoglossidae	<i>Cynoglossus arel</i> Bloch & Schneider, 1801	Marine, Mangrove, Coral reef, Intertidal	Data deficient

*Table continued on next page.....*

No	Orders	Families	Latin name	Habitats	IUCN
1273			<i>Cynoglossus bilineatus</i> Lacepède, 1802	Marine, Mangrove, Coral reef	Least concern
1274			<i>Cynoglossus cynoglossus</i> Hamilton, 1822	Marine	Least concern
1275			<i>Cynoglossus itinus</i> Snyder, 1909	Marine	Not evaluated
1276			<i>Cynoglossus joyneri</i> Günther, 1878	Marine	Not evaluated
1277			<i>Cynoglossus kopsii</i> Bleeker, 1851	Marine	Least concern
1278			<i>Cynoglossus lighti</i> Norman, 1925	Marine	Not evaluated
1279			<i>Cynoglossus lineolatus</i> Steindachner, 1867	Marine, Intertidal	Not evaluated
1280			<i>Cynoglossus macrolepidotus</i> Bleeker, 1851	Marine, Mangrove, Coral reef	Not evaluated
1281			<i>Cynoglossus maculipinnis</i> Rendahl, 1921	Marine	Not evaluated
1282			<i>Cynoglossus melampetalus</i> Richardson, 1846	Marine, Mangrove, Coral reef	Not evaluated
1283			<i>Cynoglossus monopus</i> Bleeker, 1849	Marine	Least concern
1284			<i>Cynoglossus nigropinnatus</i> Ochiai, 1963	Marine	Not evaluated
1285			<i>Cynoglossus oligolepis</i> Bleeker, 1855	Marine, Mangrove, Coral reef	Not evaluated
1286			<i>Cynoglossus puncticeps</i> Richardson, 1846	Marine, Mangrove, Coral reef, Intertidal	Least concern
1287			<i>Cynoglossus robustus</i> Günther, 1873	Marine, Mangrove, Coral reef	Not evaluated
1288			<i>Cynoglossus roulei</i> Wu, 1932	Marine	Not evaluated
1289			<i>Cynoglossus semilaevis</i> Günther, 1873	Marine, Mangrove, Coral reef	Not evaluated
1290			<i>Cynoglossus sibogae</i> Weber, 1913	Marine, Intertidal	Not evaluated
1291			<i>Cynoglossus sinicus</i> Wu, 1932	Marine, Mangrove, Coral reef	Not evaluated
1292			<i>Cynoglossus trigrammus</i> Günther, 1862	Marine, Mangrove, Coral reef	Least concern
1293			<i>Paraplagusia bilineata</i> Bloch, 1787	Marine, Mangrove, Coral reef	Not evaluated
1294			<i>Paraplagusia blochii</i> Bleeker, 1851	Marine	Not evaluated
1295			<i>Paraplagusia japonica</i> Temminck & Schlegel, 1846	Marine	Not evaluated
1296			<i>Symphurus orientalis</i> Bleeker, 1879	Marine	Not evaluated
1297		Paralichthyidae	<i>Paralichthys olivaceus</i> Temminck & Schlegel, 1846*	Marine	Not evaluated
1298			<i>Pseudorhombus arsius</i> Hamilton, 1822	Marine, Mangrove, Coral reef, Intertidal	Not evaluated
1299			<i>Pseudorhombus cinnamoneus</i> Temminck & Schlegel, 1846	Marine, Mangrove, Coral reef	Least concern
1300			<i>Pseudorhombus elevatus</i> Ogilby, 1912	Marine	Not evaluated
1301			<i>Pseudorhombus javanicus</i> Bleeker, 1853	Marine, Mangrove, Coral reef	Not evaluated
1302			<i>Pseudorhombus levisquamis</i> Oshima, 1927	Marine	Least concern
1303			<i>Pseudorhombus malayanus</i> Bleeker, 1865*	Marine, Mangrove, Coral reef	Not evaluated

Table continued on next page.....

No	Orders	Families	Latin name	Habitats	IUCN
1304			<i>Pseudorhombus neglectus</i> Bleeker, 1865	Marine	Least concern
1305			<i>Pseudorhombus oligodon</i> Bleeker, 1854	Marine, Mangrove, Coral reef	Least concern
1306			<i>Pseudorhombus pentophthalmus</i> Günther, 1862	Marine	Least concern
1307			<i>Pseudorhombus quinquocellatus</i> Weber & de Beaufort, 1929	Marine	Least concern
1308			<i>Tarphops oligolepis</i> Bleeker, 1858	Marine, Mangrove, Coral reef	Least concern
1309		Pleuronectidae	<i>Pleuronichthys cornutus</i> Temminck & Schlegel, 1846	Marine, Mangrove, Coral reef	Not evaluated
1310			<i>Samaris cristatus</i> Gray, 1831	Marine	Least concern
1311		Poecilopsettidae	<i>Poecilopsetta plinthus</i> Jordan & Starks, 1904	Marine	Least concern
1312			<i>Poecilopsetta praelonga</i> Alcock, 1894	Marine	Least concern
1313		Psettodidae	<i>Psettodes erumei</i> Bloch & Schneider, 1801	Marine	Data deficient
1314		Samaridae	<i>Plagiopsetta glossa</i> Franz, 1910	Marine, Mangrove, Coral reef	Least concern
1315		Soleidae	<i>Aesopia cornuta</i> Kaup, 1858	Marine, Mangrove, Coral reef	Least concern
1316			<i>Aseraggodes dubius</i> Weber, 1913	Marine	Least concern
1317			<i>Aseraggodes kobensis</i> Steindachner, 1896	Marine	Least concern
1318			<i>Aseraggodes xenicus</i> Matsubara & Ochiai, 1963	Marine	Least concern
1319			<i>Brachirus orientalis</i> Bloch & Schneider, 1801	Marine, Mangrove, Coral reef, Intertidal	Least concern
1320			<i>Brachirus pan</i> Hamilton, 1822	Marine, Mangrove, Coral reef	Least concern
1321			<i>Heteromycteris japonicus</i> Temminck & Schlegel, 1846	Marine	Not evaluated
1322			<i>Liachirus melanospilos</i> Bleeker, 1854	Marine, Intertidal	Least concern
1323			<i>Pardachirus pavoninus</i> Lacepède, 1802	Marine	Least concern
1324			<i>Solea elongata</i> Day, 1877	Marine	Least concern
1325			<i>Solea ovata</i> Richardson, 1846	Marine, Mangrove, Coral reef, Intertidal	Least concern
1326			<i>Zebrias crossolepis</i> Zheng & Chang, 1965	Marine	Data deficient
1327			<i>Zebrias quagga</i> Kaup, 1858	Marine, Mangrove, Coral reef	Least concern
1328			<i>Zebrias zebra</i> Bloch, 1787	Marine, Mangrove, Coral reef, Intertidal	Not evaluated
1329			<i>Zebrias zebrinus</i> Temminck & Schlegel, 1846	Marine	Not evaluated
1330	Polymixiiformes	Polymixiidae	<i>Polymixia japonica</i> Günther, 1877	Marine	Least concern
1331	Scorpaeniformes	Aploactinidae	<i>Erisphex pottii</i> Steindachner, 1896	Marine	Least concern
1332			<i>Paraploactis kagoshimensis</i> Ishikawa, 1904	Marine	Not evaluated
1333		Bembridge	<i>Bembras japonica</i> Cuvier, 1829	Marine, Mangrove, Coral reef	Not evaluated

*Table continue on next page.....*

No	Orders	Families	Latin name	Habitats	IUCN
1334		Congiolididae	<i>Acanthosphex leurynnis</i> Jordan & Seale, 1905	Marine, Mangrove, Coral reef	Least concern
1335		Dactylopteriidae	<i>Dactyloptena gilberti</i> Snyder, 1909	Marine	Least concern
1336			<i>Dactyloptena orientalis</i> Cuvier, 1829	Marine	Least concern
1337			<i>Dactyloptena peterseni</i> Nyström, 1887	Marine	Least concern
1338		Hoplichthyidae	<i>Hoplichthys acanthopleurus</i> Regan, 1908	Marine	Data deficient
1339		Platycephalidae	<i>Cociella crocodilus</i> Cuvier, 1829	Marine, Mangrove, Coral reef	Least concern
1340			<i>Cymbacephalus nematophthalmus</i> Günther, 1860	Marine, Mangrove, Coral reef	Not evaluated
1341			<i>Elates ransonnetii</i> Steindachner, 1876	Marine	Not evaluated
1342			<i>Grammoplites scaber</i> Linnaeus, 1758	Marine, Mangrove, Coral reef, Intertidal	Not evaluated
1343			<i>Kumococius rodericensis</i> Cuvier, 1829	Marine	Least concern
1344			<i>Inegocia japonica</i> Cuvier, 1829	Marine, Mangrove, Coral reef, Intertidal	Least concern
1345			<i>Onigocia macrolepis</i> Bleeker, 1854	Marine, Mangrove, Coral reef	Least concern
1346			<i>Onigocia spinosa</i> Temminck & Schlegel, 1843	Marine, Mangrove, Coral reef	Least concern
1347			<i>Platycephalus cultellatus</i> Richardson, 1846	Marine	Not evaluated
1348			<i>Platycephalus indicus</i> Linnaeus, 1758	Marine, Mangrove, Coral reef	Data deficient
1349			<i>Plectrogenium nanum</i> Gilbert, 1905	Marine	Least concern
1350			<i>Ratabulus megacephalus</i> Tanaka, 1917	Marine	Not evaluated
1351			<i>Rogadius asper</i> Cuvier, 1829	Marine	Least concern
1352			<i>Rogadius serratus</i> Cuvier, 1829	Marine	Least concern
1353			<i>Sorsogona tuberculata</i> Cuvier, 1829	Marine	Least concern
1354			<i>Suggrundus meerdervoortii</i> Bleeker, 1860	Marine, Mangrove, Coral reef	Not evaluated
1355			<i>Thysanophrys celebica</i> Bleeker, 1855	Marine, Mangrove, Coral reef	Least concern
1356		Scorpaenidae	<i>Ablabys macracanthus</i> Bleeker, 1852	Marine	Not evaluated
1357			<i>Ablabys taenianotus</i> Cuvier, 1829	Marine	Not evaluated
1358			<i>Apistus carinatus</i> Bloch & Schneider, 1801	Marine	Least concern
1359			<i>Brachypterois serrulata</i> Richardson, 1846	Marine	Not evaluated
1360			<i>Dendrochirus zebra</i> Cuvier, 1829	Marine, Mangrove, Coral reef	Least concern
1361			<i>Hoplosebastes armatus</i> Schmidt, 1929	Marine	Not evaluated
1362			<i>Minous monodactylus</i> Bloch & Schneider, 1801	Marine	Least concern
1363			<i>Minous pictus</i> Günther, 1880	Marine	Not evaluated
1364			<i>Neomerinthe megalepis</i> Fowler, 1938	Marine	Least concern
1365			<i>Paracentropogon longispinis</i> Cuvier, 1829	Marine, Mangrove, Coral reef	Least concern

Table continued on next page.....

No	Orders	Families	Latin name	Habitats	IUCN
1366			<i>Paracentropogon rubripinnis</i> Temminck & Schlegel, 1843	Marine, Mangrove, Coral reef, Intertidal	Not evaluated
1367			<i>Parapterois heterura</i> Bleeker, 1856	Marine	Least concern
1368			<i>Parascorpaena aurita</i> Rüppell, 1838	Marine, Mangrove, Coral reef	Least concern
1369			<i>Parascorpaena picta</i> Cuvier, 1829	Marine, Mangrove, Coral reef	Least concern
1370			<i>Phenacoscorpius megalops</i> Fowler, 1938	Marine	Least concern
1371			<i>Pterois antennata</i> Bloch, 1787	Marine, Mangrove, Coral reef	Least concern
1372			<i>Pterois lunulata</i> Temminck & Schlegel, 1843	Marine	Least concern
1373			<i>Pterois russelii</i> Bennett, 1831	Marine, Mangrove, Coral reef	Least concern
1374			<i>Pterois volitans</i> Linnaeus, 1758	Marine, Mangrove, Coral reef	Least concern
1375			<i>Scorpaena izensis</i> Jordan & Starks, 1904	Marine	Not evaluated
1376			<i>Scorpaena neglecta</i> Temminck & Schlegel, 1843	Marine	Not evaluated
1377			<i>Scorpaenodes guamensis</i> Quoy & Gaimard, 1824	Marine, Mangrove, Coral reef	Least concern
1378			<i>Scorpaenopsis macrochir</i> Ogilby, 1910	Marine, Mangrove, Coral reef	Least concern
1379			<i>Scorpaenopsis venosa</i> Cuvier, 1829	Marine, Mangrove, Coral reef	Least concern
1380			<i>Scorpaenopsis barbata</i> Rüppell, 1838	Marine	Least concern
1381			<i>Scorpaenopsis cirrosa</i> Thunberg, 1793	Marine, Mangrove, Coral reef	Not evaluated
1382			<i>Scorpaenopsis diabolus</i> Cuvier, 1829	Marine, Mangrove, Coral reef	Least concern
1383			<i>Scorpaenopsis gibbosa</i> Bloch & Schneider, 1801	Marine, Mangrove, Coral reef	Least concern
1384			<i>Scorpaenopsis neglecta</i> Heckel, 1837	Marine	Least concern
1385			<i>Scorpaenopsis ramaraoi</i> Randall & Eschmeyer, 2002	Marine	Least concern
1386			<i>Sebastes inermis</i> Cuvier, 1829	Marine	Not evaluated
1387			<i>Sebastiscus marmoratus</i> Cuvier, 1829	Marine, Mangrove, Coral reef, Intertidal	Not evaluated
1388			<i>Sebastiscus tertius</i> Barsukov & Chen, 1978	Marine, Mangrove, Coral reef	Not evaluated
1389			<i>Sebastiscus albofasciatus</i> Lacepède, 1802	Marine, Mangrove, Coral reef	Not evaluated
1390			<i>Vespicula trachinoides</i> Cuvier, 1829	Marine, Mangrove, Coral reef, Intertidal	Not evaluated
1391		Synanceiidae	<i>Erosa erosa</i> Cuvier, 1829	Marine	Least concern
1392			<i>Inimicus cuvieri</i> Gray, 1835	Marine	Not evaluated
1393			<i>Inimicus didactylus</i> Pallas, 1769	Marine	Not evaluated
1394			<i>Inimicus japonicus</i> Cuvier, 1829*	Marine	Not evaluated
1395			<i>Inimicus sinensis</i> Valenciennes, 1833	Marine	Least concern

*Table continued on next page.....*

No	Orders	Families	Latin name	Habitats	IUCN
1396			<i>Synanceia verrucosa</i> Bloch & Schneider, 1801	Marine, Mangrove, Coral reef	Least concern
1397			<i>Trachicephalus uranoscopus</i> Bloch & Schneider, 1801	Marine	Least concern
1398		Tetrarogidae	<i>Richardsonichthys leucogaster</i> Richardson, 1848	Marine	Least concern
1399			<i>Tetraroge barbata</i> Cuvier, 1829	Marine, Mangrove, Coral reef	Least concern
1400		Triglidae	<i>Chelidonichthys kumu</i> Cuvier, 1829	Marine	Least concern
1401			<i>Lepidotrigla abyssalis</i> Jordan & Starks, 1904	Marine	Not evaluated
1402			<i>Lepidotrigla alata</i> Houttuyn, 1782	Marine, Mangrove, Coral reef	Not evaluated
1403			<i>Lepidotrigla hime</i> Matsubara & Hiyama, 1932	Marine	Not evaluated
1404			<i>Lepidotrigla japonica</i> Bleeker, 1854	Marine	Not evaluated
1405			<i>Lepidotrigla kishinouyi</i> Snyder, 1911	Marine	Least concern
1406			<i>Lepidotrigla marisinensis</i> Fowler, 1938	Marine, Mangrove, Coral reef	Not evaluated
1407			<i>Lepidotrigla microptera</i> Günther, 1873	Marine	Not evaluated
1408			<i>Lepidotrigla oolina</i> Fowler, 1938	Marine, Mangrove, Coral reef	Not evaluated
1409			<i>Lepidotrigla punctipectoralis</i> Fowler, 1938	Marine	Not evaluated
1410			<i>Pterygotrigla hemisticta</i> Temminck & Schlegel, 1843	Marine, Mangrove, Coral reef	Least concern
1411			<i>Pterygotrigla ryukyuensis</i> Matsubara & Hiyama, 1932	Marine	Not evaluated
1412	Siluriformes	Ariidae	<i>Arius arius</i> Hamilton, 1822	Marine, Mangrove, Coral reef	Least concern
1413			<i>Arius maculatus</i> Thunberg, 1792	Marine	Not evaluated
1414			<i>Tachysurus sinensis</i> Lacepède, 1803	Marine, Mangrove, Coral reef	Not evaluated
1415			<i>Netuma thalassina</i> Rüppell, 1837	Marine, Mangrove, Coral reef	Not evaluated
1416			<i>Plicofollis nella</i> Valenciennes, 1840	Marine	Not evaluated
1417			<i>Plicofollis polystaphylodon</i> Bleeker, 1846	Marine	Not evaluated
1418		Bagridae	<i>Mystus gulio</i> Hamilton, 1822	Marine	Least concern
1419		Clariidae	<i>Clarias batrachus</i> Linnaeus, 1758	Marine, Mangrove, Coral reef	Least concern
1420			<i>Clarias fuscus</i> Lacepède, 1803	Marine, Mangrove, Coral reef	Least concern
1421		Pangasiidae	<i>Pangasius krempfi</i> Fang & Chau, 1949	Marine	Vulnerable
1422		Plotosidae	<i>Plotosus lineatus</i> Thunberg, 1787	Marine, Mangrove, Coral reef	Not evaluated
1423		Siluridae	<i>Silurus asotus</i> Linnaeus, 1758	Marine, Mangrove, Coral reef	Least concern
1424	Stomii-formes	Gonostomidae	<i>Cyclothone pseudopallida</i> Mukhacheva, 1964	Marine	Least concern
1425		Phosichthyidae	<i>Pollichthys maui</i> Poll, 1953	Marine	Least concern

Table continued on next page.....

No	Orders	Families	Latin name	Habitats	IUCN
1426	Synbranchi- formes	Mastacembe- lidae	<i>Mastacembelus armatus</i> Lacepède, 1800	Marine	Least concern
1427		Synbranchi- dae	<i>Monopterus albus</i> Zuiew, 1793	Marine	Least concern
1428			<i>Ophisternon bengalense</i> McClelland, 1844	Marine	Least concern
1429	Syngnathi- formes	Syngnathidae	<i>Corythoichthys flavofasciatus</i> Rüppell, 1838	Marine, Mangrove, Coral reef	Least concern
1430			<i>Halicampus grayi</i> Kaup, 1856	Marine	Least concern
1431			<i>Halicampus spinirostris</i> Dawson & Allen, 1981	Marine, Mangrove, Coral reef	Least concern
1432			<i>Hippichthys cyanospilos</i> Bleeker, 1854	Marine, Mangrove, Coral reef	Least concern
1433			<i>Hippichthys heptagonus</i> Bleeker, 1849	Marine	Least concern
1434			<i>Hippichthys penicillus</i> Cantor, 1849	Marine, Mangrove, Coral reef	Least concern
1435			<i>Hippichthys spicifer</i> Rüppell, 1838	Marine, Mangrove, Coral reef	Least concern
1436			<i>Hippocampus histrix</i> Kaup, 1856*	Marine	Vulnerable
1437			<i>Hippocampus kelloggi</i> Jordan & Snyder, 1901*	Marine	Vulnerable
1438			<i>Hippocampus kuda</i> Bleeker, 1852*	Marine	Vulnerable
1439			<i>Hippocampus mohnikei</i> Bleeker, 1853*	Marine	Vulnerable
1440			<i>Hippocampus trimaculatus</i> Leach, 1814*	Marine	Vulnerable
1441			<i>Syngnathoides biaculeatus</i> Bloch, 1785*	Marine	Least concern
1442			<i>Phoxocampus belcheri</i> Kaup, 1856	Marine, Mangrove, Coral reef	Least concern
1443			<i>Syngnathus acus</i> Linnaeus, 1758*	Marine, Mangrove, Coral reef	Least concern
1444			<i>Syngnathus pelagicus</i> Linnaeus, 1758	Marine	Least concern
1445			<i>Syngnathus schlegeli</i> Kaup, 1856*	Marine	Least concern
1446			<i>Trachyrhamphus serratus</i> Tem- minck & Schlegel, 1850*	Marine	Data deficient
1447	Tetraodonti- forme	Balistidae	<i>Abalistes stellatus</i> Anonymous, 1798	Marine	Not evaluated
1448			<i>Canthidermis rotundatus</i> Marion de Procé, 1822	Marine, Mangrove, Coral reef	Least concern
1449			<i>Balistoides conspicillum</i> Bloch & Schneider, 1801	Marine	Not evaluated
1450			<i>Canthidermis maculata</i> Bloch, 1786	Marine	Least concern
1451			<i>Melichthys vidua</i> Richardson, 1845	Marine, Mangrove, Coral reef	Not evaluated
1452			<i>Pseudobalistes flavimarginatus</i> Rüppell, 1829	Marine	Not evaluated
1453			<i>Pseudobalistes fuscus</i> Bloch & Schneider, 1801	Marine	Not evaluated
1454			<i>Rhinecanthus aculeatus</i> Linnaeus, 1758	Marine	Not evaluated
1455			<i>Rhinecanthus rectangulus</i> Bloch & Schneider, 1801	Marine, Mangrove, Coral reef	Not evaluated
1456			<i>Sufflamen chrysopterum</i> Bloch & Schneider, 1801	Marine, Mangrove, Coral reef	Not evaluated
1457			<i>Sufflamen fraenatum</i> Latreille, 1804	Marine	Least concern
1458		Diodontidae	<i>Cyclichthys orbicularis</i> Bloch, 1785	Marine, Mangrove, Coral reef	Not evaluated
1459			<i>Diodon holocanthus</i> Linnaeus, 1758*	Marine, Mangrove, Coral reef	Least concern
1460			<i>Diodon hystrix</i> Linnaeus, 1758	Marine, Mangrove, Coral reef	Least concern

*Table continued on next page.....*



No	Orders	Families	Latin name	Habitats	IUCN
1461			<i>Diodon liturosus</i> Shaw, 1804	Marine, Mangrove, Coral reef	Not evaluated
1462		Molidae	<i>Masturus lanceolatus</i> Liénard, 1840	Marine	Least concern
1463		Monacanthidae	<i>Anacanthus barbatus</i> Gray, 1830	Marine	Least concern
1464			<i>Aluterus monoceros</i> Linnaeus, 1758	Marine, Mangrove, Coral reef	Least concern
1465			<i>Aluterus scriptus</i> Osbeck, 1765	Marine, Mangrove, Coral reef	Least concern
1466			<i>Chaetodermis penicilligerus</i> Cuvier, 1816	Marine, Mangrove, Coral reef	Least concern
1467			<i>Monacanthus chinensis</i> Osbeck, 1765	Marine, Mangrove, Coral reef	Least concern
1468			<i>Oxymonacanthus longirostris</i> Bloch & Schneider, 1801	Marine, Mangrove, Coral reef	Vulnerable
1469			<i>Paraluteres prionurus</i> Bleeker, 1851	Marine, Mangrove, Coral reef	Least concern
1470			<i>Paramonacanthus japonicus</i> Tilesius, 1809	Marine	Least concern
1471			<i>Paramonacanthus oblongus</i> Temminck & Schlegel, 1850	Marine, Mangrove, Coral reef	Least concern
1472			<i>Paramonacanthus otisensis</i> Whitley, 1931	Marine	Least concern
1473			<i>Paramonacanthus pusillus</i> Rüppell, 1829	Marine	Least concern
1474			<i>Paramonacanthus sulcatus</i> Hollard, 1854	Marine	Least concern
1475			<i>Stephanolepis cirrhifer</i> Temminck & Schlegel, 1850	Marine	Least concern
1476			<i>Stephanolepis setifer</i> Bennett, 1831	Marine, Mangrove, Coral reef	Least concern
1477			<i>Thamnaconus hypargyreus</i> Cope, 1871	Marine	Least concern
1478			<i>Thamnaconus modestoides</i> Barnard, 1927*	Marine	Least concern
1479			<i>Thamnaconus septentrionalis</i> Günther, 1874	Marine, Mangrove, Coral reef	Least concern
1480			<i>Thamnaconus tessellatus</i> Günther, 1880	Marine	Least concern
1481		Ostraciontidae	<i>Lactoria cornuta</i> Linnaeus, 1758	Marine, Mangrove, Coral reef	Not evaluated
1482			<i>Ostracion cubicum</i> Linnaeus, 1758	Marine, Mangrove, Coral reef	Not evaluated
1483			<i>Ostracion immaculatum</i> Temminck & Schlegel, 1850	Marine	Not evaluated
1484			<i>Ostracion meleagris</i> Shaw, 1796	Marine, Mangrove, Coral reef	Not evaluated
1485			<i>Rhynchostracion nasus</i> Bloch, 1785	Marine, Mangrove, Coral reef	Not evaluated
1486			<i>Tetrosomus concatenatus</i> Bloch, 1785	Marine	Not evaluated
1487			<i>Tetrosomus gibbosus</i> Linnaeus, 1758	Marine	Least concern
1488		Tetraodontidae	<i>Amblyrhynchotes honckenii</i> Bloch, 1785	Marine	Least concern
1489			<i>Amblyrhynchotes rufopunctatus</i> Li, 1962	Marine	Not evaluated
1490			<i>Arothron hispidus</i> Linnaeus, 1758	Marine, Mangrove, Coral reef	Least concern

Table continued on next page.....

No	Orders	Families	Latin name	Habitats	IUCN
1491			<i>Arothron nigropunctatus</i> Bloch & Schneider, 1801	Marine, Mangrove, Coral reef	Least concern
1492			<i>Arothron stellatus</i> Anonymous, 1798	Marine	Least concern
1493			<i>Canthigaster axiologus</i> Whitley, 1931	Marine	Least concern
1494			<i>Canthigaster rivulata</i> Temminck & Schlegel, 1850	Marine, Mangrove, Coral reef	Least concern
1495			<i>Canthigaster valentini</i> Bleeker, 1853	Marine, Mangrove, Coral reef	Least concern
1496			<i>Chelonodon patoca</i> Hamilton, 1822	Marine, Mangrove, Coral reef	Least concern
1497			<i>Lagocephalus gloveri</i> Abe & Tabeta, 1983	Marine	Data deficient
1498			<i>Lagocephalus inermis</i> Temminck & Schlegel, 1850*	Marine, Mangrove, Coral reef	Least concern
1499			<i>Lagocephalus lagocephalus</i> Linnaeus, 1758	Marine	Least concern
1500			<i>Lagocephalus lunaris</i> Bloch & Schneider, 1801*	Marine, Mangrove, Coral reef, Intertidal	Least concern
1501			<i>Lagocephalus sceleratus</i> Gmelin, 1789	Marine	Least concern
1502			<i>Lagocephalus spadiceus</i> Richardson, 1845	Marine, Mangrove, Coral reef	Least concern
1503			<i>Lagocephalus wheeleri</i> Abe, Tabeta & Kitahama, 1984	Marine	Not evaluated
1504			<i>Takifugu alboplumbeus</i> Richardson, 1845	Marine, Mangrove, Coral reef, Intertidal	Least concern
1505			<i>Takifugu basilevskianus</i> Basilevsky, 1855	Marine, Mangrove, Coral reef	Data deficient
1506			<i>Takifugu bimaculatus</i> Richardson, 1845	Marine, Intertidal	Least concern
1507			<i>Takifugu niphobles</i> Jordan & Snyder, 1901	Marine, Mangrove, Coral reef, Intertidal	Least concern
1508			<i>Takifugu oblongus</i> Bloch, 1786	Marine, Mangrove, Coral reef, Intertidal	Least concern
1509			<i>Takifugu ocellatus</i> Linnaeus, 1758	Marine, Mangrove, Coral reef	Near threatened
1510			<i>Takifugu poecilonotus</i> Temminck & Schlegel, 1850	Marine	Least concern
1511			<i>Takifugu porphyreus</i> Temminck & Schlegel, 1850	Marine, Mangrove, Coral reef	Least concern
1512			<i>Takifugu vermicularis</i> Temminck & Schlegel, 1850*	Marine	Near threatened
1513			<i>Takifugu xanthopterus</i> Temminck & Schlegel, 1850	Marine, Mangrove, Coral reef	Least concern
1514		Triacanthidae	<i>Pseudotriacanthus strigilifer</i> Cantor, 1849*	Marine	Not evaluated
1515			<i>Triacanthus biaculeatus</i> Bloch, 1786*	Marine, Mangrove, Coral reef	Not evaluated
1516			<i>Tripodichthys blochii</i> Bleeker, 1852	Marine	Not evaluated
1517	Zeiformes	Parazenidae	<i>Cyttopsis cypho</i> Fowler, 1934	Marine	Not evaluated
1518		Zeidae	<i>Zenopsis nebulosa</i> Temminck & Schlegel, 1845	Marine	Not evaluated
1519			<i>Zeus faber</i> Linnaeus, 1758	Marine	Data deficient

Note: \* Species listed in the Chinese traditional medicines

In order to better protect fish biodiversity and fisheries resource, China government had announced fishing ban in Beibu Gulf since 1999 (June 1- August 1 from 1999-2003, June 1- August 1 from 2004-2016; May 1- August 16 from 2017). In the fishing ban period, all forms of fishing were not allowed in the Beibu Gulf. However, some Vietnamese fishermen still continued their fishing activities during the period of fishing ban in the Beibu Gulf (Vu, 2013). The effects of fishing ban caused tensions between China and Vietnam (Vu, 2013). Therefore, we hope the government of China and Vietnam to take more co-operations to consolidated time quantum and scope in the Beibu Gulf.

The biological information (biology, ecology, distribution, and life-history) of many fish was lack, which was limited to the scientific management of bioresources and fisheries sustainability. Especially some migratory fish species (including anadromous, catadromous, and mangroves seagrass Coral reef fishes) spend partial life history in different habitats. These migratory fishes should have been paid more attention. A great number of studies have been funded by China's Belt and Road initiative. However, few studies focused on conservation of fish biodiversity and fishery sustainability in the Beibu Gulf. We call on more international cooperation of fishery scholars among China, Vietnam and other ASEAN countries.

## CONCLUSIONS

A rich diversity of fish species has been observed in the Beibu Gulf, with about 107 fish species are endangered species (Table 1). However, overfishing, pollution, habitat destruction, and non-native species are main threat to fish biodiversity and sustainable utilization of fish resources in the Beibu Gulf. Therefore, more international cooperation about protected areas, fishing bans, and scientific researches should be implemented for effective protecting fish biodiversity and fisheries resource sustainability.

## ACKNOWLEDGEMENTS

We are grateful to the three anonymous referees for their helpful comments on previous drafts of this paper. National Natural Science Foundation of China (31702351), Key Special Project for Introduced Talents Team of Southern Marine Science and Engineering Guangdong Laboratory (Guangzhou) (GML2019ZD0605), Central Public-interest Scientific Institution Basal Research Fund, South China Sea Fisheries Research Institute, CAFS (2016TS35), Central Public-interest Scientific Institution Basal Research Fund, CAFS (2020TD16), Science and Technology Program of Guangzhou, China (202102080509), and open fund of Key Laboratory of

Recreational Fisheries, Ministry of Agriculture and Rural Areas (2019N03, 2020N05).

### Declarations

#### Ethical approval

This article does not contain any studies with animals performed by any of the authors.

### Sampling and field studies

All necessary permits for sampling and observational field studies have been obtained by the authors from the competent authorities and are mentioned in the acknowledgements, if applicable.

### Data availability

All data generated or analyzed during this study are included in this article.

### Statement of conflict of interest

The authors have declared no conflict of interest.

## REFERENCES

- Arai, T., 2015. Diversity and conservation of Coral reef fishes in the Malaysian South China Sea. *Rev. Fish Biol. Fisher.*, **25**: 85-101. <https://doi.org/10.1007/s11160-014-9371-9>
- Bruton, M.N., 1995. Have fishes had their chips. The dilemma of threatened fishes. *Environ. Biol. Fish.*, **43**: 1-27. <https://doi.org/10.1007/BF00001812>
- Chen, H.L., 2015. *Catch composition and effects on fishery resources of Stow net in Qiongzhou Strait*. Master's thesis. Guangdong Ocean University, Zhanjiang, Guangdong, China.
- Chen, Z., Qiu, Y. and Xu, S., 2011. Changes in trophic flows and ecosystem properties of the Beibu Gulf ecosystem before and after the collapse of fish stocks. *Ocean Coast. Manage.*, **54**: 601-611. <https://doi.org/10.1016/j.ocecoaman.2011.06.003>
- Chen, Z., Qiu, Y., Jia, X. and Zhong, Z., 2008. Effects of fishing on the marine ecosystem of Beibu Gulf. *Chinese J. appl. Ecol.*, **9**: 1604-1610.
- CTCIT (Coastal and tideland resources comprehensive investigation team of Guangxi), 1986. *Coastal and tideland resources comprehensive survey report of Guangxi* (IV: marine organism).
- Dey, V.K., 2016. The global trade in ornamental fish. *Inf. Fish Int.*, **4**: 52-55. <https://www.infish.org>
- Dulvy, N.K., Sadovy, Y. and Reynolds, J.D., 2003. Extinction and vulnerability in marine populations. *Fish Fish.*, **4**: 25-64. <https://doi.org/10.1046/j.1467-2979.2003.00105.x>
- Evers, H.G., Pinnegar, J.K. and Taylor, M.I., 2019.

- Where are they all from. Sources and sustainability in the ornamental freshwater fish trade. *J. Fish Biol.*, **94**: 909-916. <https://doi.org/10.1111/jfb.13930>
- FAO (Food and Agriculture Organization of the United Nations), 2020. *The state of world fisheries and aquaculture: Sustainability in action*. Rome. <https://www.fao.org>
- Faunce, C.H. and Serafy, J.E., 2006. Mangroves as fish habitat: 50 years of field studies. *Mar. Ecol. Prog. Ser.*, **318**: 1-18. <https://doi.org/10.3354/meps318001>
- Fu, C., Wu, J., Chen, J., Wu, Q. and Lei, G., 2003. Freshwater fish biodiversity in the Yangtze River basin of China: patterns, threats and conservation. *Biodivers. Conserv.*, **12**: 1649-1685.
- Fu, J.L., 2018. *Distribution of fish populations and structure of fish communities in the coastal waters of Northwest Beibu Gulf and their influential factors*. Master's thesis. Shanghai Ocean University, Shanghai, China.
- He, B.Y., and Lai, T.H., 2013. *Marine fauna in the mangrove wetlands of Guangxi Beibu Gulf, China*. Science Press, Beijing, China, pp. 160-220.
- Hoang, N.T., Nguyen, T.Y., Ho, A.T., and Nguyen, K.T., 2017. Species composition of fish in estuary area of Mai Giang River in Quynh Luu and Hoang Mai Districts, Nghe An Province. *Flora Fauna Vietnam*, **7**: 382-387.
- Hoang, N.V., and Duc, N.H., 2012. Research on fish species composition in Tam Giang-Cau Hai lagoon, Thua Thien-Hue province. *Acad. J. Biol.*, **34**: 20-30. <https://doi.org/10.15625/0866-7160/v34n1.666>
- IOZ (Institute of Zoology, Chinese Academy of Sciences), IO (Institute of Oceanology, Chinese Academy of Sciences), and SFC (Shanghai Fisheries College), 1962. *Ichthyography of the South China sea*. Science Press, Beijing, China, pp. 1129-1184.
- Islam, M.S. and Tanaka, M., 2004. Impacts of pollution on coastal and marine ecosystems including coastal and marine fisheries and approach for management: A review and synthesis. *Mar. Pollut. Bull.*, **48**: 624-649. <https://doi.org/10.1016/j.marpolbul.2003.12.004>
- IUCN website, 2021. <https://www.iucnredlist.org>
- Jia, X.P., 2003. *Ecological environment and resources of fishery in Beibu Gulf*. Science Press, Beijing, China.
- Kaiser, D., Schulz-Bull, D.E. and Waniek, J.J., 2016. Profiles and inventories of organic pollutants in sediments from the central Beibu Gulf and its coastal mangroves. *Chemosphere*, **153**: 39-47. <https://doi.org/10.1016/j.chemosphere.2016.03.041>
- Kang, B., 2013. What do the occurrences of migratory fishes in the Upper Mekong Mean? *Ambio*, **42**: 877-880. <https://doi.org/10.1007/s13280-013-0422-6>
- Kang, B., He, D.M., Perrett, L., Wang, H.Y., Hu, W.X., Deng, W.D. and Wu, Y.F., 2009. Fish and fisheries in the upper Mekong: current assessment of the fish community, threats and conservation. *Rev. Fish Biol. Fisher.*, **19**: 465-480. <https://doi.org/10.1007/s11160-009-9114-5>
- Kang, B., Liu, M., Huang, X.X., Li, J., Yan, Y.R., Han, C.C. and Chen, S.B., 2018. Fisheries in Chinese seas: What can we learn from controversial official fisheries statistics. *Rev. Fish Biol. Fisher.*, **28**: 503-519. <https://doi.org/10.1007/s11160-018-9518-1>
- Kimirei, I.A., Nagelkerken, I., Griffioen, B., Wangner, C. and Mgaya, Y.D., 2011. Ontogenetic habitat use by mangrove/seagrass-associated Coral reef fishes shows flexibility in time and space. *Estuar. Coast Shelf Sci.*, **92**: 47-58. <https://doi.org/10.1016/j.ecss.2010.12.016>
- King, T., 2019. Wild caught ornamental fish: A perspective from the UK ornamental aquatic industry on the sustainability of aquatic organisms and livelihoods. *J. Fish Biol.*, **94**: 925-936. <https://doi.org/10.1111/jfb.13900>
- Koongolla, J.B., Lin, L., Pan, Y.F., Yang, C.P., Sun, D.R., Liu, S., Xu, X.R., Maharana, D., Huang, J.S. and Li, H.X., 2020. Occurrence of microplastics in gastrointestinal tracts and gills of fish from Beibu Gulf, South China Sea. *Mar. Pollut. Bull.*, **101**: 972-985. <https://doi.org/10.1016/j.envpol.2019.113734>
- Lai, T.H., and He, B.Y., 2016. *Marine osteichthyes fishes in Guangxi Beibu Gulf of China*. Science Press, Beijing, China, pp. 445-450.
- Lei, J., Liao, Y., Tang, W., Xie, D., Wang, T., Xiong, W. and Bowler, P.A., 2022. Fish biodiversity in Zhanjiang mangroves national nature reserve, China. *Turk. J. Zool.*, **46**: 74-77.
- Li, X.S., Liang, Z.H., and Jiang, M.X., 1987. A preliminary study on the fish fauna in the northern Beibu Gulf along our coastal area. *J. Guangxi Acad. Sci.*, **8**: 97-118.
- Lin, B.A., Yang, Y.W., Li, J.L., Kang, B., Fang, L.P., Zheng, L.M. and Liu, M., 2020. First records of small juveniles of the red drum *Sciaenops ocellatus* (Linnaeus, 1766) in a subtropical mangrove habitat of China. *BioInvasions Rec.*, **9**: 1-7. <https://doi.org/10.3391/bir.2020.9.1.13>
- Lin, Y., Gao, Z. and Zhan, A., 2015. Introduction and use of non-native species for aquaculture in China: status, risks and management solutions.

- Rev. Aquacult.*, **7**: 28-58. <https://doi.org/10.1111/raq.12052>
- Liu, J., Wu, R.X., Kang, B. and Ma, L., 2016. *Fishes of Beibu Gulf*. Science Press, Beijing, China, pp. 400-442.
- Liu, J.Y., 2013. Status and marine biodiversity of the China Seas. *PLoS One*, **8**: e50719. <https://doi.org/10.1371/journal.pone.0050719>
- Luo, C.Y., Li, Y., Zhu, Y., Nong, X.W., 1999. A further faunistic study of fishes from the Beibu Bay. *J. Guangxi Normal Univ.*, **17**: 85-89.
- Mora, C., Tittensor, D.P. and Myers, R.A., 2008. The completeness of taxonomic inventories for describing the global diversity and distribution of marine fishes. *Proc. Roy. Soc. B*, **275**: 149-155. <https://doi.org/10.1098/rspb.2007.1315>
- Muda, O., Mat, M., Vinh, C.T., Taupék, M., and Zainal, A., 2005. Fish taxonomic studies in the South China Sea, Area IV: Vietnamese waters. *Proceedings of the SEAFDEC Seminar on Fishery Resources in the South China Sea, Area IV: Vietnamese Waters*, 41-54. [http://map.seafdec.org/downloads/pdf/collaborative%20research/AreaIV\\_Vietnam/SCS\\_FRS4\\_04.pdf](http://map.seafdec.org/downloads/pdf/collaborative%20research/AreaIV_Vietnam/SCS_FRS4_04.pdf)
- Nelson, J.S., 2006. *Fishes of the world* (Four edition). John Wiley & Sons, New Jersey.
- Qin, W.X., 2017. Study on the status, Problems and Countermeasures of Port Economic Development in Beibu Gulf of Guangxi. *Chinese Contemp. Econ.*, **21**: 58-60.
- Qiu, Y., Zeng, X., Chen, T., Yuan, W. and Wang, Y., 2008. *Fishery resources and management in South China Sea*. The Ocean Press, Beijing, China.
- Reis, R.E., Albert, J.S., Di Dario, F., Mincarone, M.M., Petry, P. and Rocha, L.A., 2016. Fish biodiversity and conservation in South America. *J. Fish Biol.*, **89**: 12-47. <https://doi.org/10.1111/jfb.13016>
- Sambrook, K., Hoey, A.S., Andréfouët, S., Cumming, G.S., Duce, S. and Bonin, M.C., 2019. Beyond the reef: The widespread use of non-reef habitats by Coral reef fishes. *Fish Fish.*, **20**: 903-920. <https://doi.org/10.1111/faf.12383>
- SCSO (South China Sea Institute of Oceanology, Chinese Academy of Sciences), 1978. *Marine medicinal organisms of the south China Sea*. Science Press, Beijing, China.
- Stephenson, P.J. and Stengel, C., 2020. An inventory of biodiversity data sources for conservation monitoring. *PLoS One*, **15**: e0242923. <https://doi.org/10.1371/journal.pone.0242923>
- Sun, D., and Chen, Z., 2015. *Fish retrieval in the South China Sea (Volume I)*. The Ocean Press, Beijing, China.
- Sun, J.Y., 1990. New record of fishes in Beibu Gulf. *J. Guangxi Acad. Sci.*, **6**: 88-94.
- Thu, P.T., Huang, W.C., Chou, T.K., Van, N.Q., and Liao, T.Y., 2019. DNA barcoding of coastal ray-finned fishes in Vietnam. *PLoS One*, **14**: e0222631. <https://doi.org/10.1371/journal.pone.0222631>
- Trung Ho, T.V., Woodley, S., Cottrell, A. and Valentine, P., 2014. A multilevel analytical framework for more effective governance in human-natural systems: a case study of marine protected areas in Vietnam. *Ocean Coast. Manage.*, **90**: 11-19. <https://doi.org/10.1016/j.ocecoaman.2013.12.015>
- Vu, H.D., 2013. A bilateral network of marine protected areas between Vietnam and China: An alternative to the Chinese unilateral fishing ban in the South China Sea. *Ocean Dev. Int. Law.*, **44**: 145-169. <https://doi.org/10.1080/00908320.2013.750984>
- Wang, H., Wang, Q., Bowler, P.A. and Xiong, W., 2016. Invasive aquatic plants in China. *Aquat. Invasions*, **11**: 1-9. <https://doi.org/10.3391/ai.2016.11.1.01>
- Wang, H., Xie, D., Bowler, P.A., Zeng, Z.F., Xiong, W. and Liu, C.L., 2021. Non-indigenous species in marine and coastal habitats of the South China Sea. *Sci. Total Environ.*, **759**: 143465. <https://doi.org/10.1016/j.scitotenv.2020.143465>
- Wang, J.S., Li, M.C., Liu, Y.X., Zhang, H.X. and Zou, W., 2014. Safety assessment of shipping routes in the South China Sea based fuzzy analytic hierarchy process. *Saf. Sci.*, **62**: 46-57. <https://doi.org/10.1016/j.ssci.2013.08.002>
- Wang, L.X., 2009. *Preliminary study on fish communities during Spring and Autumn in water of Beibu Gulf*. Master's thesis. Ocean University of China, Qingdao, Shandong, China.
- Wang, Q., Yang, G., Wu, X.B., Xu, X.R., Lai, C.M., Ning, Y., and Luo, J.F., 2006. Fish resources and their conservation strategies in Hepu Dugong State Nature Reserve and its adjacent waters. *Chinese J. appl. Ecol.*, **17**: 1715-1720.
- Wang, R., Xu, D. and Ge, Q., 2020. Modern modes of sediment distribution and the anthropogenic heavy metal pollution record in northeastern Beibu Gulf, south China sea. *Mar. Pollut. Bull.*, **150**: 110694. <https://doi.org/10.1016/j.marpolbul.2019.110694>
- Wang, X., Qiu, Y., Du, F., Liu, W., Sun, D., Chen, X., Yuan, W. and Chen, Y., 2019. Roles of fishing and climate change in long-term fish species succession and population dynamics in the outer Beibu Gulf, South China Sea. *Acta Oceanol. Sin.*, **38**: 1-8. <https://doi.org/10.1007/s13131-019-1484-5>
- Wang, X., Wang, L., Chen, H., Jia, X., and Jackson D.A.,

2017. Determining a more environmental than spatial influence on structuring fish communities and ecological boundaries of Fangcheng coastal waters, Northern South China Sea. *J. Coastal Res.*, **80**: 55-68. <https://doi.org/10.2112/SI80-009.1>
- Worm, B. and Branch, T.A., 2012. The future of fish. *Trends Ecol. Evol.*, **27**: 594-599. <https://doi.org/10.1016/j.tree.2012.07.005>
- Xiong, W., Shen, C.Y., Wu, Z.X., Lu, H.S. and Yan, Y.R., 2017. A brief overview of known introductions of non-native marine and coastal species into China. *Aquat. Invasions*, **12**: 109-115. <https://doi.org/10.3391/ai.2017.12.1.11>
- Xiong, W., Sui, X.Y., Liang, S.H. and Chen, Y.F., 2015. Non-native freshwater fish species in China. *Rev. Fish Biol. Fisher.*, **25**: 651-687. <https://doi.org/10.1007/s11160-015-9396-8>
- Xiong, W., Wang, Q., Xie, D., Fletcher, D.H. and He, D.K., 2018a. Factors influencing tropical Island freshwater fishes: Species, status, threats and conservation in Hainan Island. *Knowl. Manage. aquat. Ecosyst.*, **419**: 6. <https://doi.org/10.1051/kmae/2017054>
- Xiong, W., Xie, D., Chen, G. and He, D.K., 2019. Freshwater fish biodiversity in the Leizhou Peninsula of China. *Aquat. Ecosyst. Hlth.*, **22**: 160-170. <https://doi.org/10.1080/14634988.2019.1632666>
- Xiong, W., Zhu, G.P., Wang, Z.L. and Ye, N., 2018b. Length-weight relationships of four fish species from mangrove of Zhanjiang, China. *J. appl. Ichthyol.*, **34**: 167-168. <https://doi.org/10.1111/jai.13516>
- Xiong, W., Zhu, X.W., Xie, D. and Pan, C.H., 2018c. Length-weight relationships of eight fish species from mangroves of Guangdong, China. *J. appl. Ichthyol.*, **34**: 729-730. <https://doi.org/10.1111/jai.13588>
- Ye, F.L., Zhang, J.D., and Wang, C., 1993. A preliminary survey of fishes in the littoral waters of Fangcheng, Guangxi. *J. Zhangjiang Fish. Coll.*, **13**: 10-13.
- Ye, N., Chen, X.H., and Liu, H.L., 2007. Poisonous goby fish in west coast of Zhanjiang. *Chinese Ocean Fish.*, **12**: 45-46.
- Yu, M.H., 2019. *Study on energy density of potential bait fish of Chinese white dolphin in Sanniang Bay*. Master's thesis. Guangxi University, Xining, Guangxi, China.
- Yu, Y.J. and Mu, Y.T., 2006. The new institutional arrangements for fisheries management in Beibu Gulf. *Mar. Policy*, **30**: 249-260. <https://doi.org/10.1016/j.marpol.2004.12.006>
- Yuan, W.W., Qiu, Y.S., Guo, J.F., 1994. *Report of fishery resources by bottom trawl in Beibu Gulf*. South China Sea Fisheries Research Institute, Chinese Academy of Fishery Sciences.
- Zhang, K., Cai, Y., Liao, B., Jiang, Y., Sun, M., Su, L. and Chen, Z., 2020. Population dynamics of threadfin porgy *Evynnis cardinalis*, an endangered species on the IUCN red list in the Beibu Gulf, South China Sea. *J. Fish Biol.*, **97**: 479-489. <https://doi.org/10.1111/jfb.14398>
- Zhang, T., Liu, H.L., Xu Q.Z., and Wang, H.Y., 2017a. *Survey and study on the marine species resources of the intertidal zone in Beibu Gulf*. Science Press, Beijing, China, pp.152-155.
- Zhang, W.C., Ye, Z.J., Tian, Y.J., Li, Z.G., and Zhuang, L.C., 2017b. Fish community structure in Yangpu waters of Beibu Gulf. *Chinese J. Ecol.*, **36**: 1894-1904.
- Zhang, W.J., Zheng, Z.Y., Zhang, T. and Chen, T.R., 2020. Strengthened marine heatwaves over the Beibu Gulf Coral reef regions from 1960 to 2017. *Chinese Acta Oceanol. Sin.*, **42**: 41-48.
- Zhou, M., Lin, Y., Yang, S., Cao, W., and Zheng, L., 2011. Composition and ecological distribution of ichthyoplankton in eastern Beibu Gulf. *Acta Oceanol. Sin.*, **30**: 94-105. <https://doi.org/10.1007/s13131-011-0095-6>
- Zou, J., Lin, P. and Wang, Q., 2013. Evaluation of catch in Beibu Gulf of South China Sea in 2012. *South China Fisher. Sci.*, **9**: 75-81.